



**Ardmore, Asheldon Road, Wellswood – TQ1 2QN**

Guide Price **£399,950**





## Ardmore, Asheldon Road

Wellswood, South Devon

Delightful 4-bed terraced house in sought-after Wellswood Village. Spacious living areas over 3 levels. Lounge/dining room, fitted kitchen, 3 double bedrooms, family bathroom. Courtyard-style garden and integral garage. Close to local amenities. Ideal family home. Early viewing recommended.

Tenure: Freehold

- Sought after location in Wellswood Village
- Downstairs cloakroom/WC
- Spacious lounge/dining room
- Fitted kitchen with built in appliances
- Integral single garage
- Three double bedrooms with main having en suite shower room/WC
- Family bathroom/WC
- Courtyard style garden
- Gas central heating and uPVC double glazing
- Spacious accommodation set over three levels



# Ardmore, Asheldon Road

Wellswood, South Devon

The property occupies a much sought after location within 200 yards of Wellswood village with its boutique shops and restaurants and close proximity to Ilsham Primary School. Torquay town centre and sea front are both within approximately 1 miles distance. Meadfoot and Babbacombe Downs are also close by and offer lovely walks and picturesque views.

## Absolute Sales & Lettings

Absolute Sales & Lettings Ltd, 13 Ilsham Road - TQ1 2JG

01803 214214

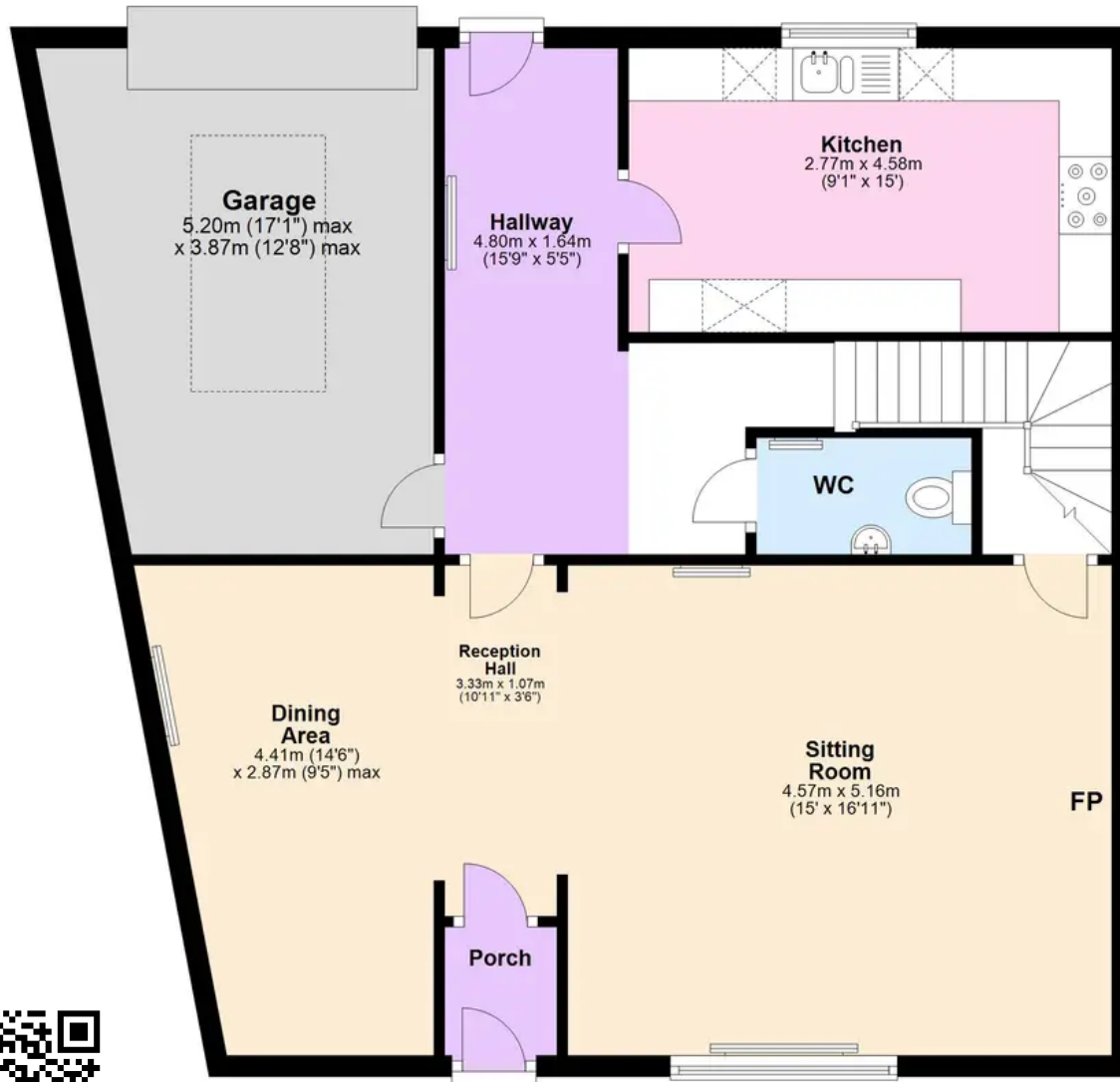
[torquay@movewithabsolute.co.uk](mailto:torquay@movewithabsolute.co.uk)

[movewithabsolute.co.uk/](http://movewithabsolute.co.uk/)



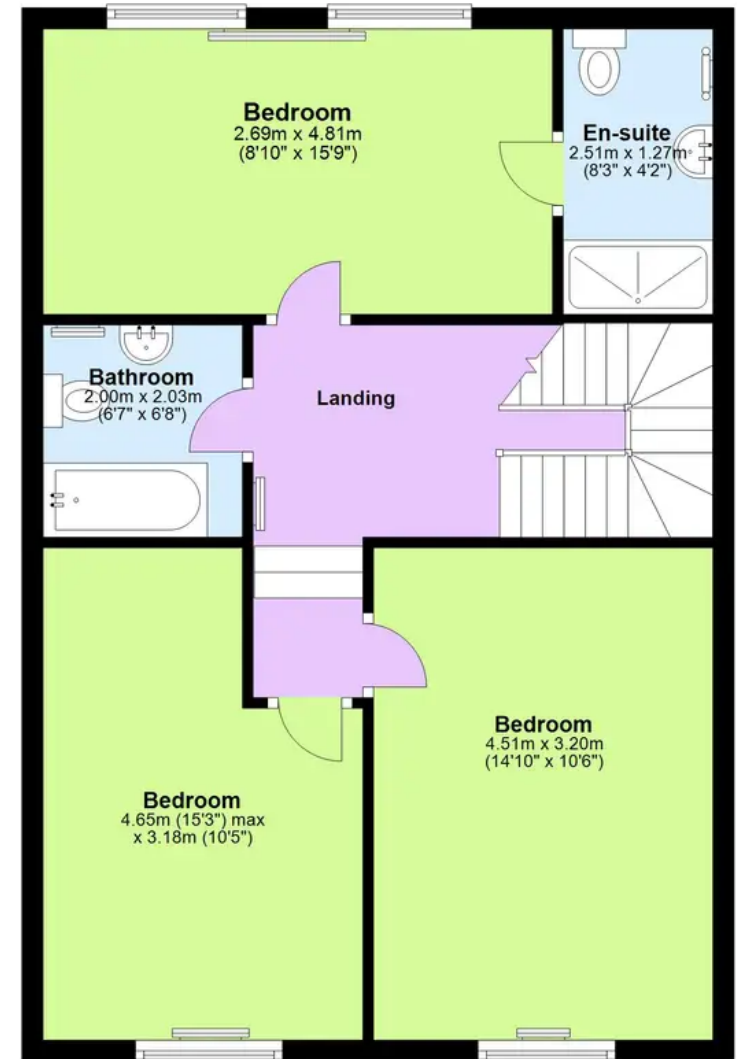
## Ground Floor

Approx. 89.0 sq. metres (958.4 sq. feet)



## First Floor

Approx. 61.4 sq. metres (660.6 sq. feet)



Total area: approx. 150.4 sq. metres (1619.0 sq. feet)

Approx  
Plan produced using PlanUp.

