



redrose

11 Springwater Close

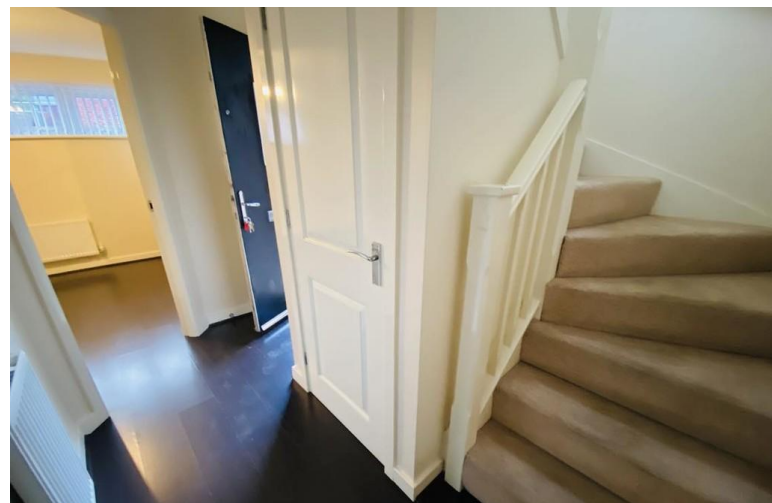
Buckshaw Village, Chorley, PR7 7FF

A lovely 'little gem' of a home in a fantastic location, gated entrance to parking and fabulous open plan living leading out to a lovely balcony. Great sized bedroom and bathroom to the ground floor, open plan living space/kitchen with washing machine and fridge/freezer. Just a stroll away from shops and amenities...

Asking Price Of £125,000

EPC Rating 'TBC'





Property Description

ENTRANCE HALLWAY

Entrance hallway with door leading to bathroom bedroom and under stairs cupboard. Stairs leading to top floor

BEDROOM

3.4 X 3.6 Double bedroom, double glazed windows to front, ceiling light point, storage cupboard, radiator

BATHROOM

1.9 X 1.8 Bath with shower over, WC, wash hand basin, radiator, ceiling light fitting, double glazed window, vinyl flooring. OPEN PLAN LOUNGE/KITCHEN

5.7 X 3.4 Lovely open plan living room/kitchen, Juliet balcony to front, double glazed window, patio door to decked balcony, ceiling light fitting, 2 x radiators, loft hatch. Open plan leading to kitchen with range of wall and base units, gas hob, single electric oven, fridge freezer, washing machine. A really lovely bright living space!

BALCONY



A great place to sit and enjoy a glass of what you fancy....Lovely decked balcony to catch the evening sun.

PARKING/OUTSIDE

Parking space in the gated carport and further parking on the road.





GROUND FLOOR
429 sq. ft. (39.9 sq.m.) approx.



1ST FLOOR
244 sq. ft. (22.7 sq.m.) approx.



TOTAL FLOOR AREA - 673 sq. ft. (62.5 sq.m.) approx.
While every effort has been made to ensure the accuracy of the figures and floor plans, measurements of floor, wall, ceiling, rooms and any other items are approximate and no responsibility is taken for any error, omission or mis-statement. This plan is for guidance purposes only and should be used in conjunction with the property purchase. The services, systems and equipment shown here are not tested and no guarantee is to their operation or efficiency can be given.
Redrose and Neptun 2022

%epcGraph_c_1_325%

Redrose
15 Barnes Wallis Way
Buckshaw Village
Chorley
Lancs

www.redrosepm.co.uk
sales@redrose.co.uk
01772 456558

Agents Note: Whilst every care has been taken to prepare these sales particulars, they are for guidance purposes only. All measurements are approximate and for general guidance purposes only and whilst every care has been taken to ensure their accuracy, they should not be relied upon and potential buyers are advised to recheck the measurements