



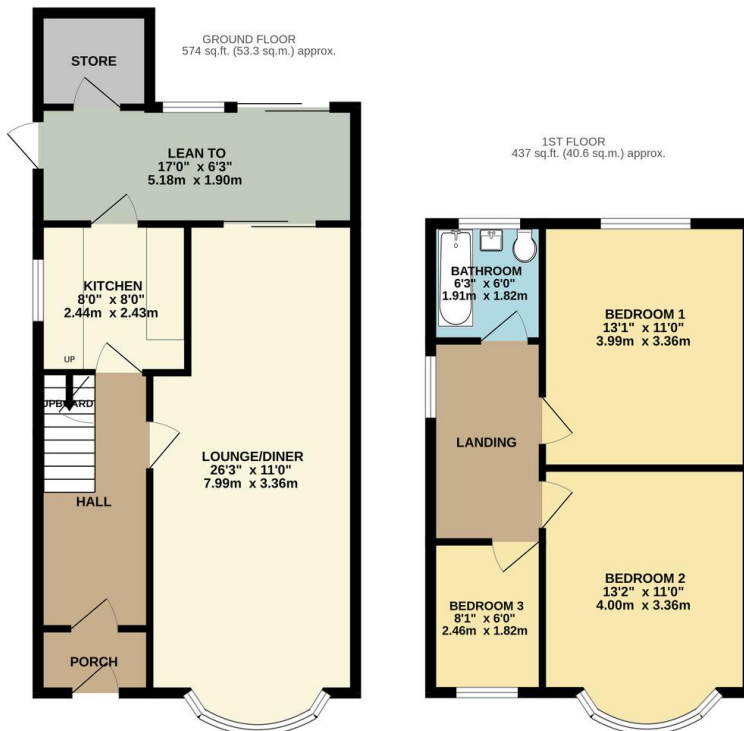
FOR SALE

3 Bed Semi-Detached House in Lynmouth Drive, Wigston, LE18 1BP
£250,000

Situated in Wigston this spacious three bedroom semi detached is offered with no upward chain and requires further modernisation. The accommodation comprises porch to main entrance hall, lounge / diner, kitchen, rear lean to, landing to three bedrooms, bathroom, landscaped gardens, carport, off road parking. Call Phillips George to view.



EPC to follow.



TOTAL FLOOR AREA : 1011 sq.ft. (93.9 sq.m.) approx.
Whilst every attempt has been made to ensure the accuracy of the floorplan contained herein, measurements of doors, windows, rooms and any other items are approximate and no responsibility is taken for any error, omission or mis-statement. This plan is for illustrative purposes only and should be used as such by any prospective purchaser. The services, systems and appliances shown have not been tested and no guarantee as to their operability or efficiency can be given.
Made with Metropix 12024

- Semi Detached
- Three Bedrooms
- Highly Popular Location
- Requiring Modernisation
- No Upward Chain
- Good Sized Garden
- Off Road Parking
- Carport

Agents Note: Whilst every care has been taken to prepare these sales particulars, they are for guidance purposes only. All measurements are approximate and for general guidance purposes only and whilst every care has been taken to ensure their accuracy, they should not be relied upon and potential buyers are advised to recheck the measurements.

