



LOVETT
Sales & Lettings

£110,000



14d Ashbydale House, Cambridge Street, St. Neots, PE19 1JL

- STUDIO APARTMENT
- OFF ROAD PARKING
- GROUND FLOOR
- TOWN CENTRE LOCATION
- GAS CENTRAL HEATING
- CLOSE TO SHOPS/AMENITIES

Full Description

Lovett Sales and Lettings are excited to offer for sale this tidy ground floor studio apartment located just off the Town Centre granting a short walking distance to shops and local amenities. The accommodation comprises of entrance hall, lounge/bedroom, fitted kitchen and a bathroom. To the rear there is a car port parking space. The property has no forward chain and has 151 years remaining on its lease

ENTRANCE HALL

Double glazed UPVC door leading to rear of property with doors leading to bathroom, kitchen and bedroom



KITCHEN

6' 10" x 5' 10" (2.08m x 1.78m)

Fitted kitchen comprising of stainless-steel single drainer sink unit with mixer tap, work surfaces with tiled splashbacks, cupboards below, wall mounted cupboards, free standing electric cooker and hob, radiator, gas combi boiler, Double glazed upvc window to rear



LOUNGE/BEDROOM

14' 09" x 10' 10" (4.5m x 3.3m)

Double glazed bay window to front, coving to textured ceiling, radiator.

BATHROOM

Three piece suite comprising of low level w.c., pedestal wash hand basin, panelled bath, partially tiled to splash, radiator, frosted window to rear, textured ceiling



CAR PORT PARKING

There is car port parking at the rear of the property.

LEASEHOLD DETAILS

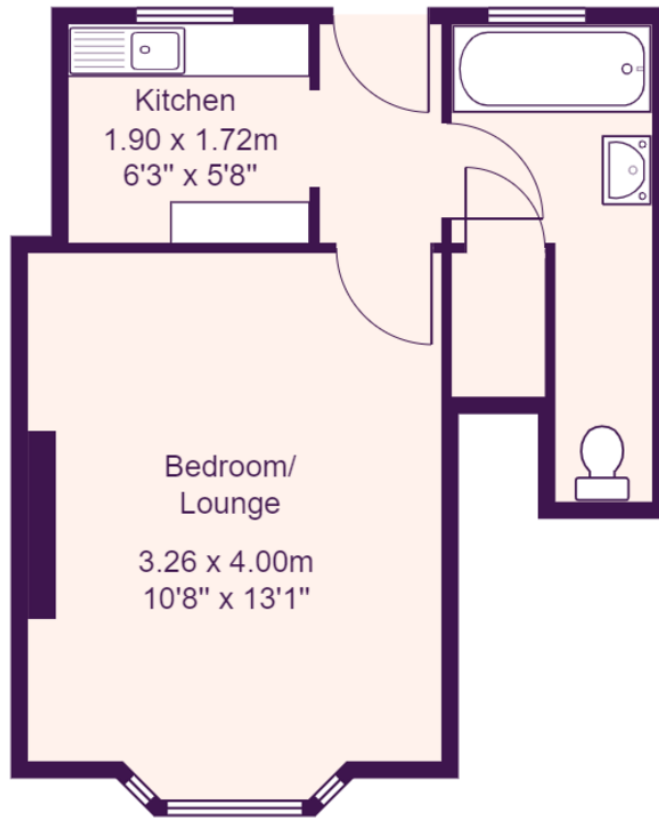
There are 151 years remaining on the lease. No ground rent payable. Buildings insurance £402 a year. The management is handled by the freeholder who holds a reserve fund and arranges work needed and is payable between the four leaseholders.

LOOKING FOR A BUY TO LET?

This property is ideal for a buy to let with an expected rent of £625 PCM giving a gross rental yield of 6.8%.







Total Area: 24.2 m² ... 261 ft²

All measurements are approximate and for display purposes only