



LOVETT
Sales & Lettings

£310,000



32 Bishops Road, Eynesbury, St. Neots, PE19 2QA

- Semi-detached family home
- Three bedrooms
- Triple glazed windows
- Close to schools and amenities
- Garage and driveway
- Easy access to A428 & A1

Full Description

A spacious three bedroom semi-detached family home within walking distance of primary/secondary schools and local shops and amenities. The property is also close to leisure facilities including gym, indoor swimming pool, sports halls and Pocket Park with its riverside walks. The well looked after accommodation comprises entrance hall, living room, dining room and kitchen on the ground floor. The first floor has three good sized bedrooms and a family bathroom. The property benefits from TRIPLE GLAZED WINDOWS and gas radiator heating. Garage and driveway providing off road parking for several vehicles. Viewing highly recommended!

ENTRANCE HALL

UPVC entrance door leading to entrance hall. Stairs to first floor with large walk in cupboard under. Door to living room. Wall mounted gas boiler. Radiator.

LIVING ROOM

13' 8" x 11' 10" (4.17m x 3.61m)

UPVC triple glazed bay window to front. Radiator. TV and telephone point. Wood flooring. Glazed sliding doors to dining room.

DINING ROOM

10' 4" x 9' 5" (3.15m x 2.87m)

UPVC windows and French doors with retractable shutters leading to rear garden. Radiator. Wood flooring. Door to kitchen.

KITCHEN

11' 9" x 7' 5" (3.58m x 2.26m)

Kitchen comprising work surfaces with complimentary drawers and cupboards under. Wall mounted cupboards. Single bowl sink with mixer tap and tiled splash backs. Built in electric oven and five ring gas hob with extractor over. Plumbing for washing machine. Tiled floor. UPVC triple glazed window to rear with fitted shutters. UPVC door to side.

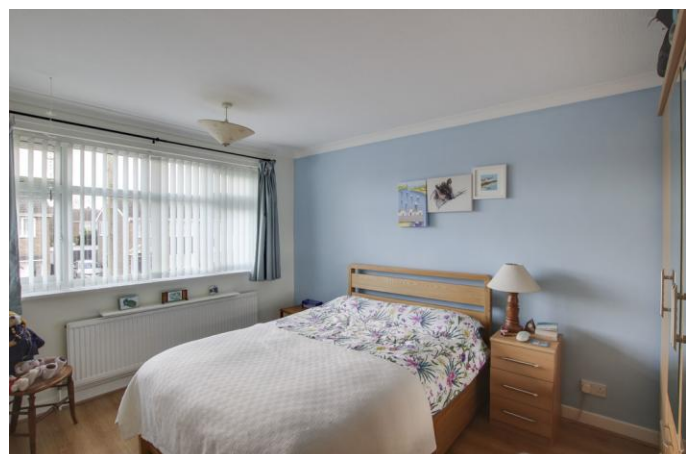
FIRST FLOOR LANDING

UPVC triple glazed window to side. Loft access (Part boarded) Airing cupboard. Doors to bedrooms and bathroom.

BEDROOM ONE

13' 8" x 9' 3" (4.17m x 2.82m)

UPVC triple glazed window to front. Radiator. Wood flooring.



BEDROOM TWO

11' 0" x 9' 5" (3.35m x 2.87m)

UPVC triple glazed window to front. Radiator.

BEDROOM THREE

8' 7" x 7' 8" (2.62m x 2.34m)

UPVC triple glazed window to front. Radiator.

BATHROOM

Three piece suite comprising low level WC, pedestal wash hand basin and panelled bath with shower over. Tiled splash backs. Radiator. UPVC triple glazed window to side.

REAR GARDEN

West facing rear garden. Mainly laid to paving with shingle and flowerbed borders. Gated access to side. Personal door to garage. Outside tap.

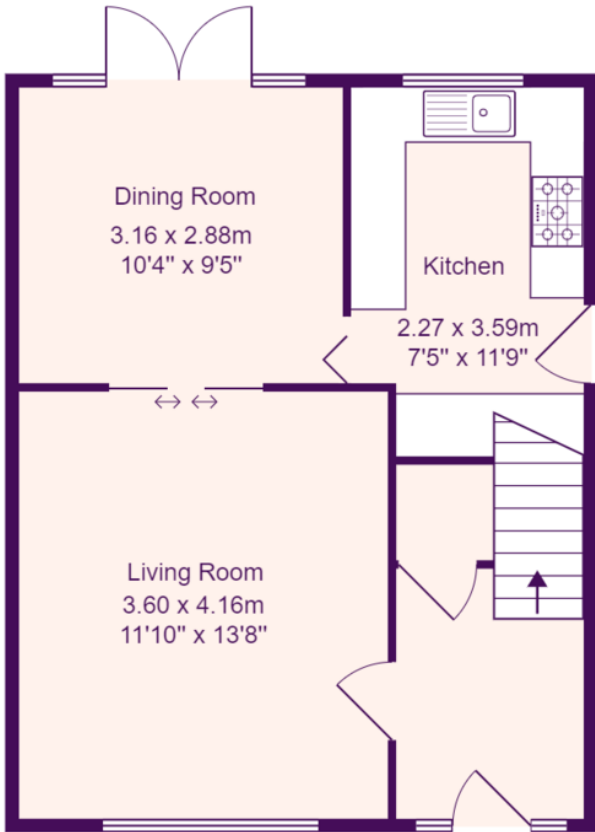
FRONT GARDEN

Shingled driveway leading to garage providing off road parking for several vehicles.

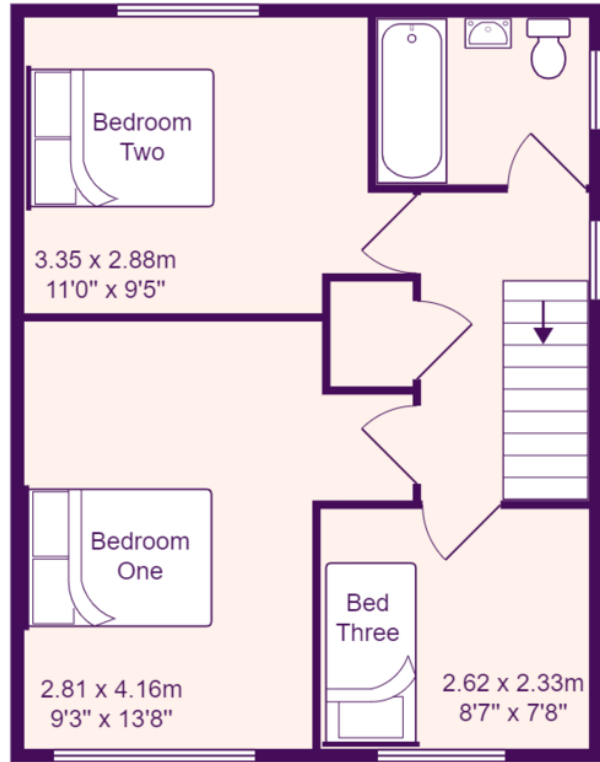
GARAGE

Single garage with up and over door. Power and light. Personal door to garden.





Ground Floor



First Floor

Total Area: 78.4 m² ... 844 ft²

All measurements are approximate and for display purposes only

EPC GRAPH

