



**Flat 137, The Round House Gunwharf Quays, Portsmouth**  
Portsmouth

Offers in Region of **£135,000**

 **chinneckshaw**



# Flat 137

## The Round House Gunwharf Quays, Portsmouth

This Studio Apartment located in The Round House, Gunwharf Quays effortlessly combines style and comfort. This studio apartment is a testament to contemporary living, offering an opportunity to be part of everything this location has to offer.

The open-plan living space merges the living, dining, and bedroom areas, creating a versatile and inviting environment. Enjoy the flexibility of arranging your space to suit your needs, whether it's relaxing after a day exploring Portsmouth or entertaining friends with the vibrant Gunwharf Quays just steps away or having this property as an investment in the heart of the city.

The kitchenette is a practical and stylish corner, equipped with modern appliances to make cooking and dining a breeze. The apartment's bathroom continues the modern theme, providing a sleek and tidy space for your daily routines.

Natural light pours in to the living area, giving the apartment a bright and airy feel. The neutral color palette and contemporary finishes create a canvas for you to add your personal touch.

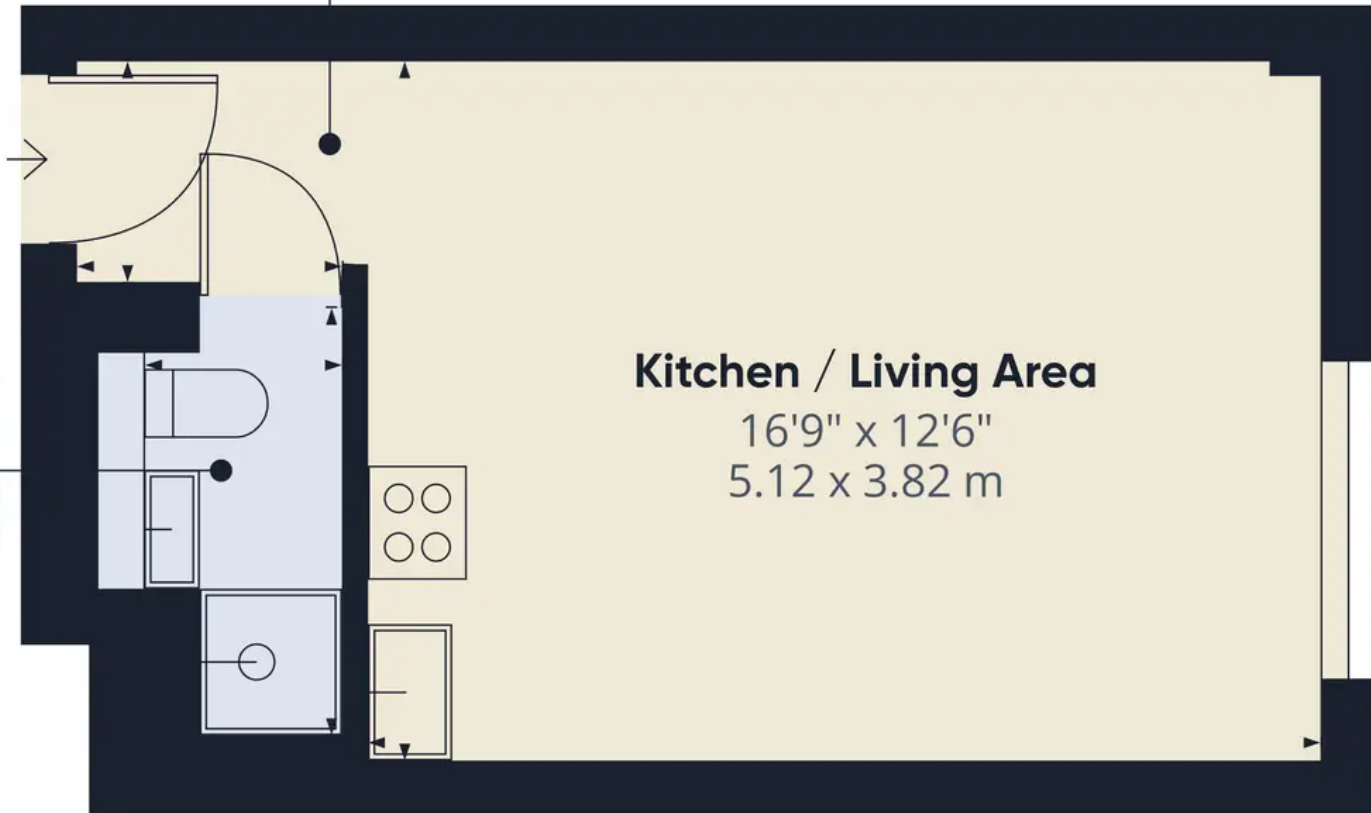
With clever storage solutions seamlessly integrated into the design, you'll find everything you need without sacrificing space. Location is a highlight – immerse yourself in the buzz of Gunwharf Quays, with its shops, restaurants, and waterfront views just waiting to be explored. Your new home awaits – a casual blend of modern convenience and relaxed vibes at The Round House, Gunwharf Quays.

Council Tax band: A Service Charge: £1,423.56 PA Ground Rent: £200 PATenure: Leasehold - 105 Years remaining



**Living Room**  
5'0" x 4'2"  
1.54 x 1.28 m

**Bathroom**  
3'11" x 7'9"  
1.22 x 2.39 m



**Kitchen / Living Area**  
16'9" x 12'6"  
5.12 x 3.82 m

**Approximate total area<sup>1)</sup>**  
272.05 ft<sup>2</sup>  
25.27 m<sup>2</sup>

Excluding balconies and terraces

While every attempt has been made to ensure accuracy, all measurements are approximate, not to scale. This floor plan is for illustrative purposes only.

**GIRAFFE360**



## Chinneck Shaw

Bridge House, Milton Road, Portsmouth – PO3 6AN

023 9282 6731

[hello@chinneckshaw.co.uk](mailto:hello@chinneckshaw.co.uk)

[www.chinneckshaw.co.uk/](http://www.chinneckshaw.co.uk/)

Chinneck Shaw, Bridge House, Milton Road, PO3 6AN Consumer Protection from Unfair Trading Regulations 2008: These details are for guidance only and complete accuracy cannot be guaranteed. If there is any point which is of particular importance, verification should be obtained. They do not constitute a contract or part of a contract. All measurements are approximate. No guarantee can be given with regard to planning permissions or fitness for purpose. No apparatus, equipment, fixture or fitting has been tested. Items shown in the photographs are NOT necessarily included. Interested Parties are advised to check availability and make an appointment to view before travelling to see a property.