

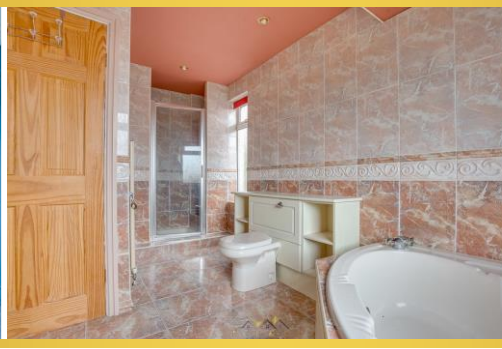


13 Main Street | North Anston | Sheffield | S25 4BD

£299,000

Bell & Co Estates are delighted to present this Three Bedroom Detached Home with separate Annex in the popular village of North Anston selling with no vendor chain. Briefly comprising of welcoming Entrance Hallway with storage cupboard and Downstairs W/C, STUNNING open plan Living Room with OPEN FIRE, Dining area with CONSERVATORY to the rear which allowing a flow of natural light and Family Kitchen with integrated appliances and spectacular views! To the first floor are THREE LARGE DOUBLE BEDROOMS and family Bathroom complete with corner bath and separate shower cubicle. To the rear of the property is a Detached Garage, large driveway and tranquil garden. Behind the garage is an ANNEX which houses a living area complete with LOG BURNER, spiral staircase and Bedroom with WALK IN WARDROBE. Within very close proximity to all local amenities and schools, this property would make the perfect family home!

- No Chain
- Spectacular Views!
- Spacious Throughout
- Kitchen with Appliances
- Large Lounge / Diner
- Family Bathroom with CORNER BATH & Separate SHOWER
- Rear Annex with LOG BURNER!



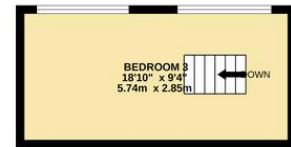
GROUND FLOOR
650 sq.ft. (60.4 sq.m.) approx.



1ST FLOOR
435 sq.ft. (40.4 sq.m.) approx.



2ND FLOOR
176 sq.ft. (16.3 sq.m.) approx.



TOTAL FLOOR AREA: 1261 sq.ft. (117.1 sq.m.) approx.

Whilst every attempt has been made to ensure the accuracy of the floorplan contained here, measurements of doors, windows, rooms and any other items are approximate and no responsibility is taken for any error, omission or mis-statement. This plan is for illustrative purposes only and should be used as such by any prospective purchaser. The services, systems and appliances shown have not been tested and no guarantee as to their operability or efficiency can be given.
Made with Metropix ©2022

Contact Details

79 Wales Road
Kiveton Park
Sheffield
South Yorkshire
S26 6RA

www.bellcoestates.com

03333 580590

13, Main Street
North Anston
SHEFFIELD
S25 4BD

Energy rating

E

Valid until
18 January 2028

Certificate number
9788-1096-7289-5358-8970

Property type Semi-detached house

Total floor area 136 square metres

Agents Note: Whilst every care has been taken to prepare these sales particulars, they are for guidance purposes only. All measurements are approximate and for general guidance purposes only and whilst every care has been taken to ensure their accuracy, they should not be relied upon and potential buyers are advised to recheck the measurements