



HELLIER  
LANGSTON  
Commercial Property Consultants

# TO LET

**88A Olivers Battery Road South, Olivers  
Battery, Winchester SO22 4EZ**  
**End of Terrace Retail Unit**



## KEY FEATURES

*Without prejudice*

Sales Area 66.99 sq. m. (710 sq. ft.)

Popular parade

Customer / visitor parking on forecourt (1 hour)

New Lease Available

1.5 miles to M3 J11

Call us on: **02382 022 111**

Visit: **[www.hlp.co.uk](http://www.hlp.co.uk)**

**Hellier Langston**  
Enterprise House, Ocean Village  
Southampton SO14 3XB

# To Let

## End of Terrace Retail Unit

### Description

The premises comprise a ground floor retail unit within a popular parade set back from Olivers Battery Road South on the corner with Compton Way.

Other occupiers within the parade are Alexandra Sports, Eclipse Foot Clinic and Oliver's Battery Dental Surgery.

The tenant will have the benefit of allowing customers and visitors to park within the forecourt for up to a 1 hour stay.

### Accommodation

The property has been measured and has the following approximate net internal areas:

	sq. m.	sq. ft.
Sales Area	66.99	710
Store Areas	6.93	75
Kitchenette	1.33	14
<b>Total:</b>	<b>75.25</b>	<b>799</b>

### Terms

The property is available on a new full repairing and insuring lease for a term to be agreed.

### Rent

£22,750 per annum exclusive.

### VAT

All prices quoted are exclusive of VAT.

### Rateable Value

Shop and premises - £15,750

Source:

[www.tax.service.gov.uk/business-rates-find/search](http://www.tax.service.gov.uk/business-rates-find/search)

### Energy Performance Certificate

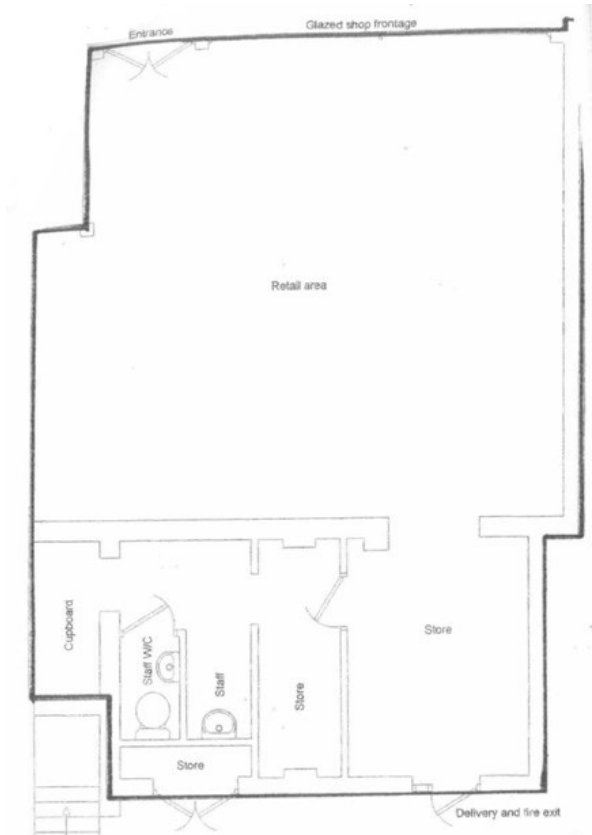
Rating – C71

### Legal Costs

Each party to be responsible for their own legal costs incurred in the transaction.

### Code for Leasing Business Premises

The Code of Leasing Business Premises in England and Wales strongly recommends that any party entering into a business tenancy or lease agreement takes professional advice from a surveyor or Solicitor. A copy of the Code (1<sup>st</sup> edition, February 2020) can be found on the RICS website.



# To Let

## End of Terrace Retail Unit



Call us on: **02382 022 111** Visit: **[www.hlp.co.uk](http://www.hlp.co.uk)**

# TO LET

## End Terrace Retail Unit



### Location

Oliver's Battery is an affluent Winchester suburb located to the south of the city with easy access to the M3.

The property is situated in a densely populated residential area but with excellent road communications with M3 J11 approximately 1.5 miles to the south east.

### Viewing

Strictly by appointment through sole agents Hellier Langston.

Call us on: **02382 022 111** Visit: **www.hlp.co.uk**



**Patrick Mattison**  
m: 07926 581464  
e:patrick@hlp.co.uk

**Hellier Langston**  
Enterprise House  
Ocean Village  
Southampton  
SO14 3XB  
02382 022 111  
www.hlp.co.uk



**HELLIER LANGSTON**  
Commercial Property Consultants

**02382 022 111**  
**www.hlp.co.uk**



**Important Information:** Hellier Langston Limited gives notice that these particulars are set out as a general outline only for the guidance of intending Purchasers or Lessees and do not constitute any part of an offer or contract. Details are given without any responsibility and any intending Purchasers, Lessees or Third Party should not rely on them as statements or representations of fact but must satisfy themselves by inspection or otherwise as to the correctness of each of them. No person employed or engaged by Hellier Langston Limited has any authority to make any representation or warranty whatsoever in relation to this property.