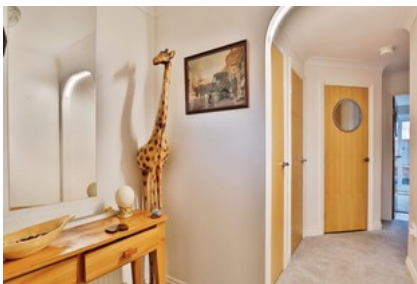




## Juniper Chase



- ✓ Captivating Four-bedroom Townhouse In The Heart Of Beverley.
- ✓ Three Floors Of Spacious Accommodation, Including A Ground-floor Guest Bedroom With En-suite.
- ✓ South-facing Courtyard Garden For Summer Barbecues.
- ✓ Integral Garage With Thermal Roller Door, Plus Parking For Two Cars And Additional Roadside Parking.
- ✓ Proximity To Westwood, Racecourse, And Excellent Local Schools.
- ✓ Freehold
- ✓ Council Tax Band E
- ✓ Epc C

Guide Price **£390,000**

Bedroom 4 Bathroom 3 Reception 2