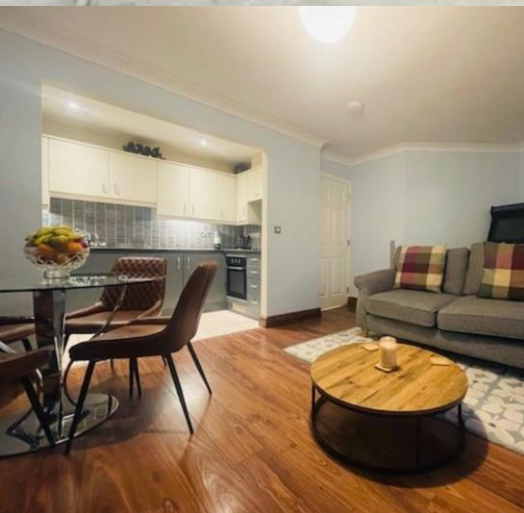


Crucible Homes



Coppice Rise
Chapelton, S35 2YZ

£145,000

Overview

No Chain

Top Floor Living

Two Bedrooms

Ensuite To Master Bedroom

Open Plan Lounge/Diner/Kitchen

EPC Rating - Pending



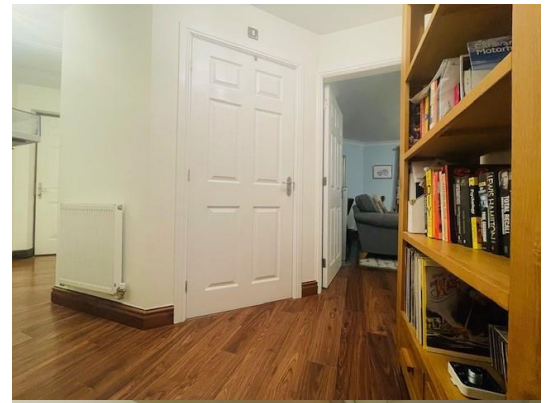
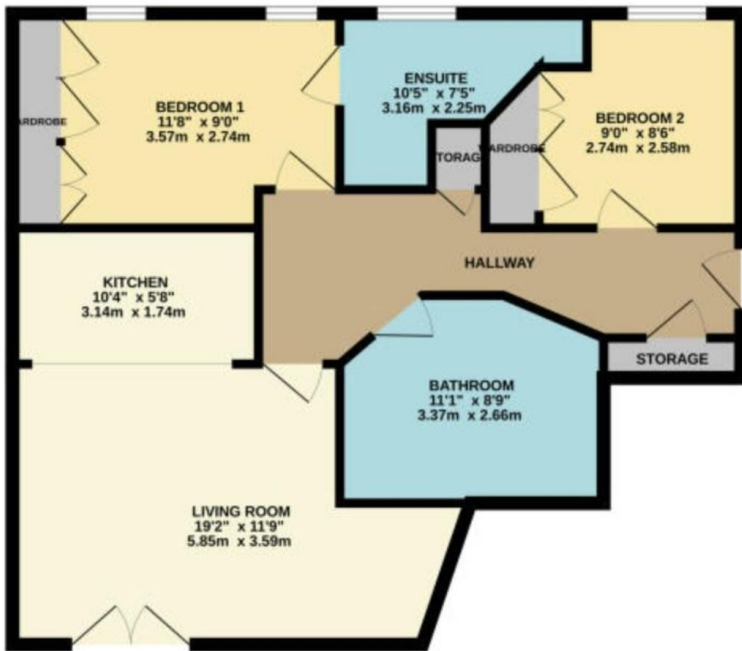
Description

Selling with NO CHAIN is this TOP floor two bedroom apartment offering modern and open plan living.

Having a central hallway that gives access to all the rooms, which in turn provides space and plenty of storage. The apartment benefits from not only having allocated parking spaces, but intercom entry for that added security.

The open plan living consists of a modern kitchen with wall and base units and integrated appliances, lounge/diner which as French Doors perfect for those summer evenings. Along the hallway there are two good sized bedrooms both fitted with wardrobes and the master having an en-suite shower room. The main family bathroom is not only spacious but has tiled floor and is fitted with bath with shower over, WC and wash hand basin.





This apartment benefits from having loft access, which is part boarded, giving extra storage within the property.

Externally is allocated parking and views which looks out over the woodlands, which can be seen from the open plan living area.

The apartment is ideally located in good distance to Chapeltown, Barnsley and other neighbouring towns and villages. Not only is the apartment in good distance to neighbouring towns, but close to local amenities including major supermarket, shops, eateries, and other small businesses.

Transport links including M1 and M18 are a short drive away, along with bus routes and train station.

A property that is move in ready and must be viewed.



AGENCY NOTE EPC Rating - Pending

Council Tax Band - B

