



## 2 Bedroom Ground Floor Maisonette

Flat 4, The Seasons, Jole Close, Swindon, SN2 7WE

Asking Price Of £180,000

**mcfarlane**  
property.com

# The Seasons

- NO ONWARD CHAIN
- Share of Freehold
- Garage and Parking

## Property description

A rare opportunity to purchase a TWO BEDROOM ground floor MAISONETTE with a SHARE OF FREEHOLD as well as access to a communal garden. The property also comes with a SINGLE GARAGE and parking and is located in the popular location of Stratton.

### External

To the front of the property there is a foot path to the front door and a graveled front garden. Opposite the building there is a single garage with parking space in front. Take a stroll down the side of the property through a gate which leads to the communal gardens, a great place to relax on a hot summers day.

### Lobby

Providing space for coats and shoes as well as privacy in the living room from front door callers

### Living Room

A lovely light and spacious room with a window to the front of the property, there is space for both sitting and dining room furniture. there is also a handy storage cupboard and a door to the inner hallway.



### Inner Hallway

Providing access to both bedrooms, the kitchen and bathroom.

### Kitchen

With a window to the front and ample storage in the base and wall units this kitchen also has space for a fridge freezer, electric oven as well as space and plumbing for a washing machine and tumble dryer and there is a stainless steel extractor. The modern boiler newly fitted in 2023 is also situated in the kitchen.

### Bedroom 1

Situated to the rear of the property with a window overlooking the communal garden, this is a lovely large double bedroom, with ample space for storage.

### Bedroom 2

Also situated to the rear of the property with a window overlooking the garden this a great sized guest/children's room or perhaps a dressing room or home office.

### Bathroom

With an obscure window to the side of the property this bathroom is furnished with a modern white suite comprising of a curved shower cubical, wash hand basin and WC.

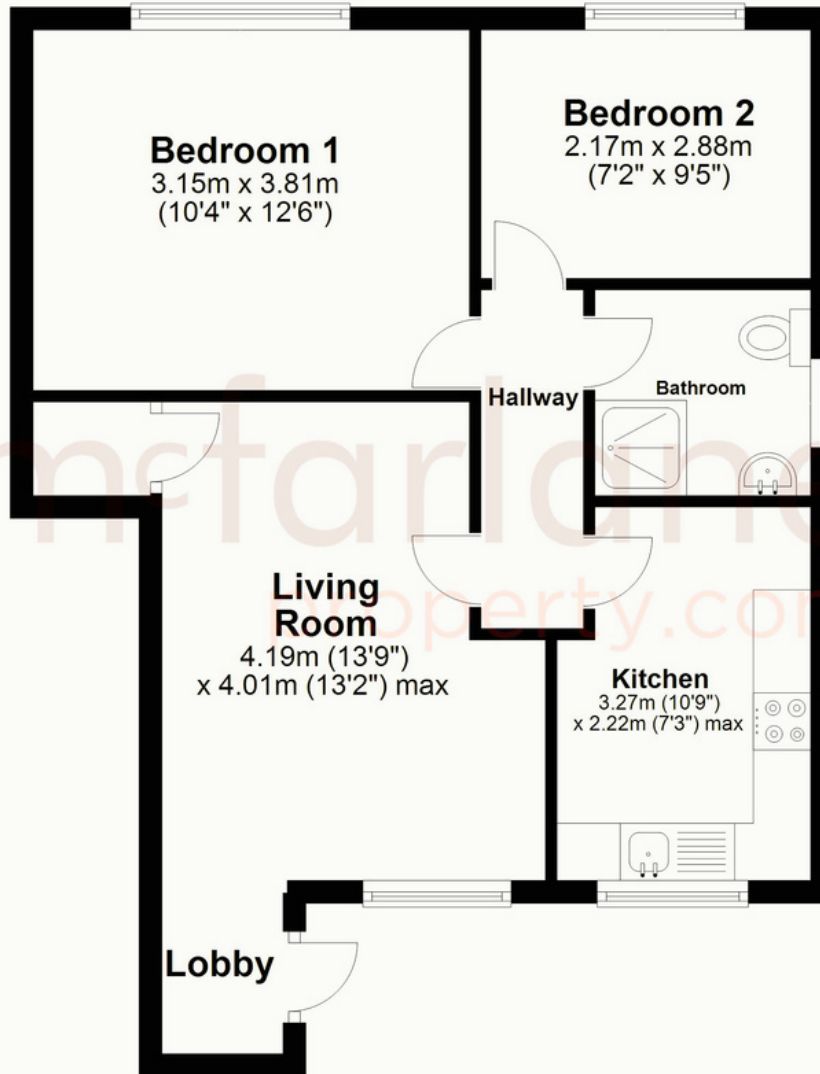
### Share of Freehold

The block of just 4 maisonettes have a share of the freehold providing a lease of 981 years. Each freeholder contributes £200 p.a towards the maintenance of the communal areas and meet on an annual basis.



## Ground Floor

Approx. 48.0 sq. metres (517.0 sq. feet)



Total area: approx. 48.0 sq. metres (517.0 sq. feet)

We   
where you  
**LIVE**

Our team are friendly, experienced and are all local. They know it better than they do their own living rooms and can help you find what you're looking for because we love where we live.

We would be delighted to show you around this property.

Because every home  
needs a personal touch.

If you would like to view this  
property then please get in touch.

☎ 01793 296600

✉ [swindon@mcfarlaneproperty.com](mailto:swindon@mcfarlaneproperty.com)

[mcfarlaneproperty.com](http://mcfarlaneproperty.com)

**mcfarlane**  
property.com

**Cricklade.**  
102 High Street  
Cricklade SN6 6AA  
☎ 01793 751044

**Marlborough.**  
106 High Street  
Marlborough SN8 1LT  
☎ 01672 514380

**Old Town.**  
28-30 Wood Street  
Swindon SN1 4AB  
☎ 01793 296880

**Swindon.**  
The Village Centre,  
Redhouse SN25 2FW  
☎ 01793 296600

Agents Note: Whilst every care has been taken to prepare these sales particulars, they are for guidance purposes only. All measurements are approximate and for general guidance purposes only and whilst every care has been taken to ensure their accuracy, they should not be relied upon and potential buyers are advised to recheck the measurements