

Love Homes



High Street, Westoning, Bedfordshire, MK45 5JQ

The property has been improved and updated over recent years by the current owners and enjoys light and airy living space over two floors. The impressive and stylish 19'0" x 14'5" open plan kitchen/dining room overlooks the rear garden and has a range of matching wall and base units with extensive worktops and breakfast bar as well as integrated appliances that include a fridge/freezer and dishwasher, an electric oven and 4 ring gas hob. Glazed double doors connect to the living room which is dual aspect with double glazed windows to the front and side. On the first floor there are three bedrooms. the smallest is a generous 10'1" x 6'0" that is currently used as an office whilst further benefits include an entrance porch, double glazed windows throughout, gas central heating with new "Glow worm" boiler installed in 2023.



This property is presented by Duncan Stead - a Love Homes property expert with over 25 years' experience.

Find out more about this property by scanning the QR code.



1.6m



3



1



1

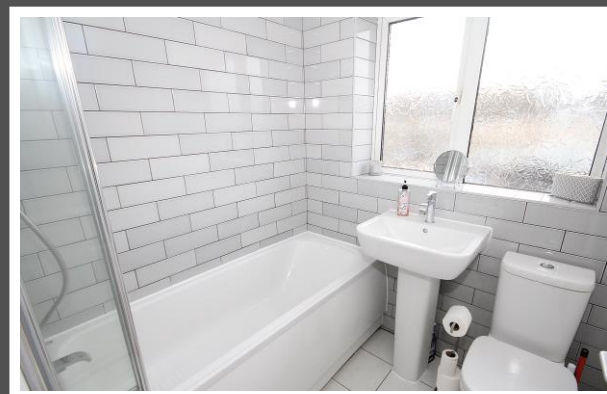
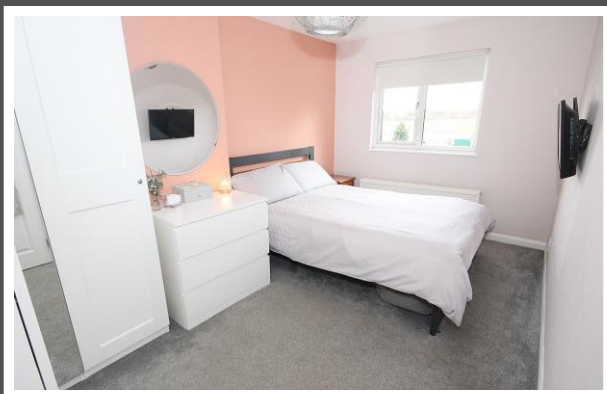
Tenure: Freehold

Council Tax: C

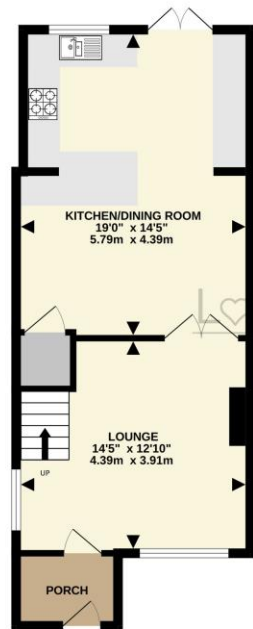




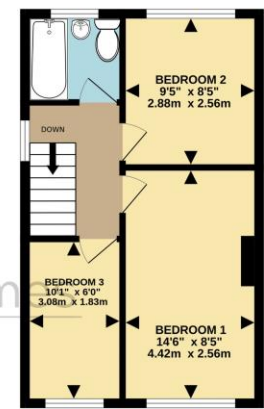
"We always wanted a big kitchen/dining area and we bought this property because it offered exactly that potential with a little re-designing and hard work! Its a fabulous room for entertaining, particularly in the summer months with the double doors opening onto the garden. Like a lot of houses, our 3rd bedroom has become an office but is larger than a lot of 3rd bedrooms and can easily accommodate everything you need from a bedroom. Westoning has a wonderful community spirit and is a great place to live and bring up a family which is why we won't be moving far!"



GROUND FLOOR
482 sq.ft. (44.8 sq.m.) approx.



1ST FLOOR
342 sq.ft. (31.8 sq.m.) approx.



TOTAL FLOOR AREA: 824 sq.ft. (76.6 sq.m.) approx.
Drawn by Love Homes for illustrative purposes only. Measurements and areas shown are approximate.
Made with Metropix 02024

Score	Energy rating	Current	Potential
92+	A		
81-91	B		83 B
69-80	C		
55-68	D	66 D	
39-54	E		
21-38	F		
1-20	G		



These particulars are set out as a general outline in accordance with the Property Misdescriptions Act (1991) only for the guidance of intending purchasers or lessees, and do not constitute any part of an offer or contract. Details are given without any responsibility, and any intending purchasers, lessees or third parties should not rely on them as statements or representations of fact but must satisfy themselves by inspection or otherwise as to the correctness of each of them. We have not carried out a structural survey and the services, appliances and specific fittings have not been tested. All photographs, measurements, floor plans and distances referred to are given as a guide only and should not be relied upon for the purchase of carpets or any other fixtures or fittings. Gardens, roof terraces, balconies and communal gardens as well as tenure and lease details cannot have their accuracy guaranteed for intending purchasers. Lease details, service ground rent (where applicable) are given as a guide only and should be checked and confirmed by your solicitor prior to exchange of contracts. No person in the employment of Love Homes has any authority to make any representation or warranty whatever in relation to this property. Purchase prices, rents or other prices quoted are correct at the date of publication and, unless otherwise stated, are exclusive of VAT. We retain the copyright in all advertising material used to market this Property. All information is as advised by the seller and subject to change. Council tax bands can be subject to change by the local council.

5 The Russell Centre, Coniston Road, Flitwick, MK45 1QY
Tel: 01525 713111

Email: flitwick@lovehomes.uk

www.lovehomes.uk

