



## 3 Worsfield Road, Broadbridge Heath

Guide Price £430,000

# 3 Worsfield Road

Broadbridge Heath, Horsham

This modern three bedroom family home is situated in the sought after Wickhurst Green development with good local amenities and well-regarded schools. Upon entering, the hallway welcomes you and there is a downstairs cloakroom with wash hand basin and low level WC. The open plan kitchen/sitting/dining room is of a generous size, filled with plenty of natural light. The sitting room benefits from French doors to the patio terrace and enjoys views over the rear garden. The contemporary kitchen features a range of wall and base cabinets providing ample storage. The kitchen includes integrated appliances of oven, gas hob, extractor fan, fridge, freezer, dishwasher and washing machine / dryer. Also of note to the living room is a large under stairs cupboard. To the first floor, there are three bedrooms. Bedroom one includes built-in wardrobes and en-suite shower room. The family bathroom features a bath with overhead shower, wash hand basin and low level WC.

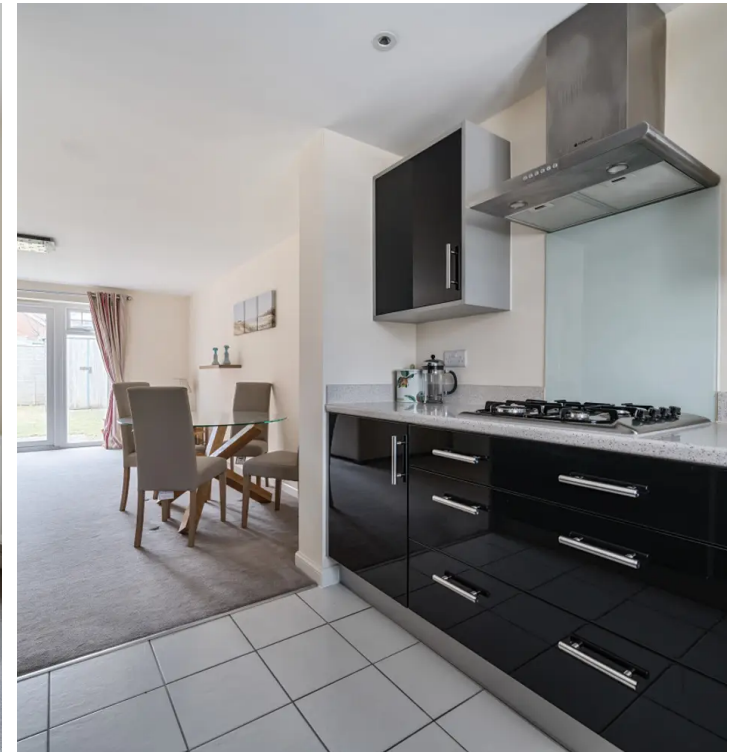
Council Tax band: D

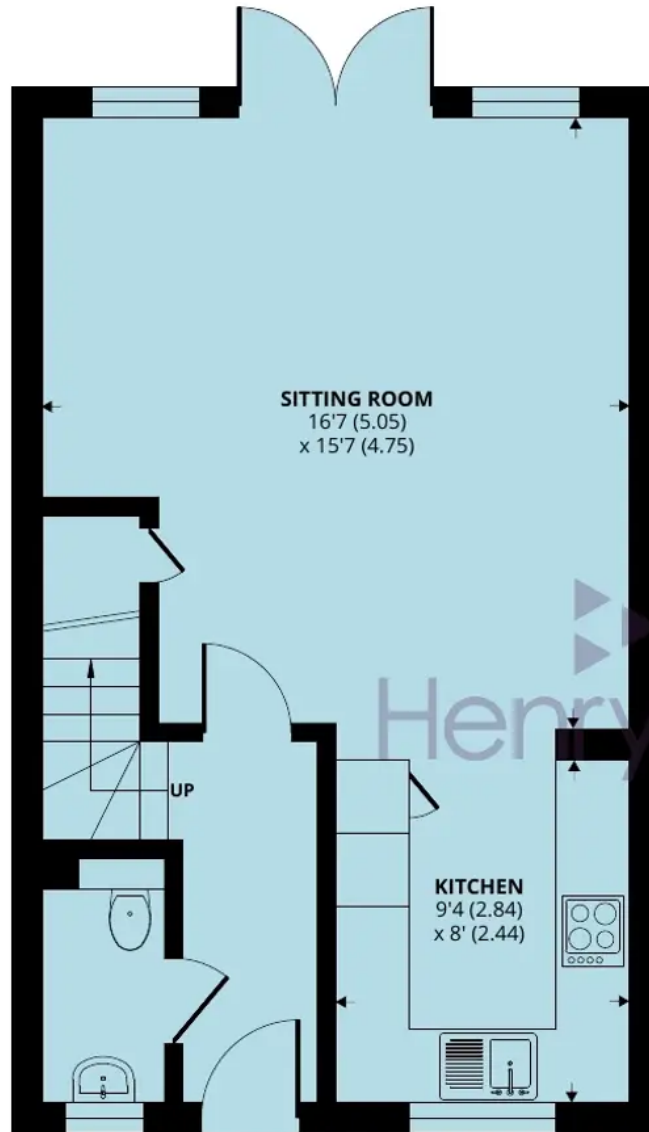
Tenure: Freehold

EPC Energy Efficiency Rating: C

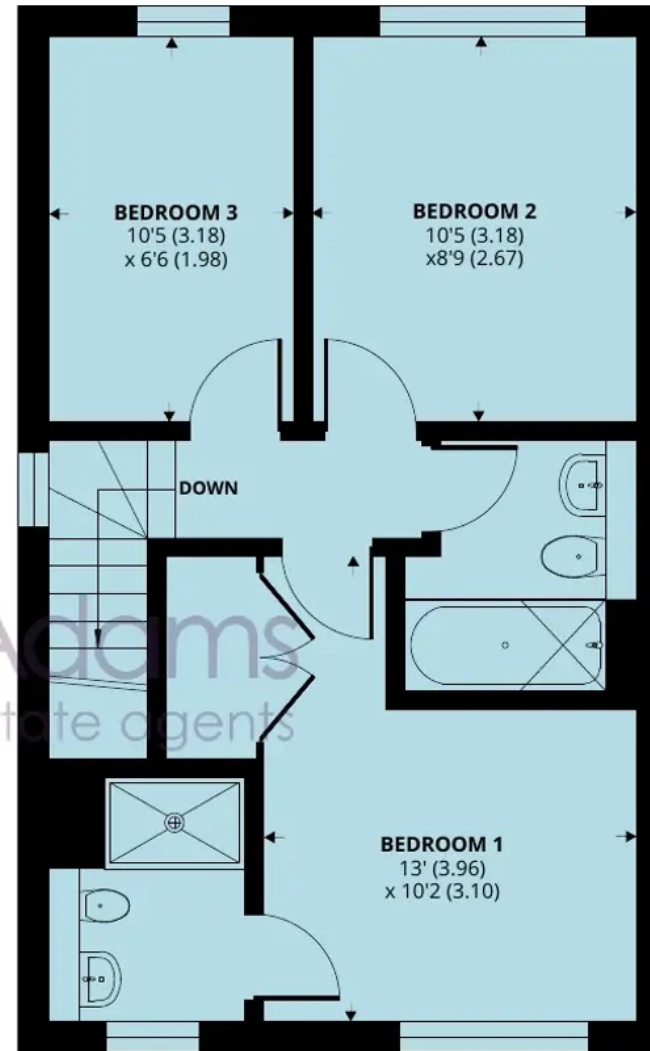
EPC Environmental Impact Rating:

- NO ONWARD CHAIN
- Three bedroom end of terrace property
- Contemporary kitchen
- Open plan kitchen/sitting/dining room
- Main bedroom with en-suite shower room
- Family bathroom
- Rear garden with patio area
- Garage
- Driveway parking
- Access to amenities





**GROUND FLOOR**



**FIRST FLOOR**

## 3 Worsfield Road, Broadbridge Heath, Horsham, RH12 3TU

Approximate Area = 858 sq ft / 79.7 sq m

For identification only - Not to scale



Floor plan produced in accordance with RICS Property Measurement Standards incorporating International Property Measurement Standards (IPMS2 Residential). © nichecom 2024. Produced for Henry Adams. REF: 1080477



## Henry Adams - Horsham

Henry Adams HRR Ltd, 50 Carfax, Horsham - RH12 1BP

01403 253271

[horsham@henryadams.co.uk](mailto:horsham@henryadams.co.uk)

[www.henryadams.co.uk/](http://www.henryadams.co.uk/)

Agents Note - Our particulars are for guidance only and are intended to give a fair overall summary of the property. They do not form part of any contract or offer, and should not be relied upon as a statement or representation of fact. Measurements, areas and distances are approximate only. Photographs may include lifestyle shots and pictures of local views. No undertaking is given as to the structural condition of the property, or any necessary consents or the operating ability or efficiency of any service, system or appliance. Please ask if you would like further information, especially before you travel to the property.