

Compton

For Rent
**10a Northburgh Street
Clerkenwell EC1**



Self-contained shell and core unit
with warehouse features suitable for
a variety of uses available.

For Rent

10a Northburgh Street
Clerkenwell EC1V

Size

7,102 Ft²

Rent

£35 per sq ft

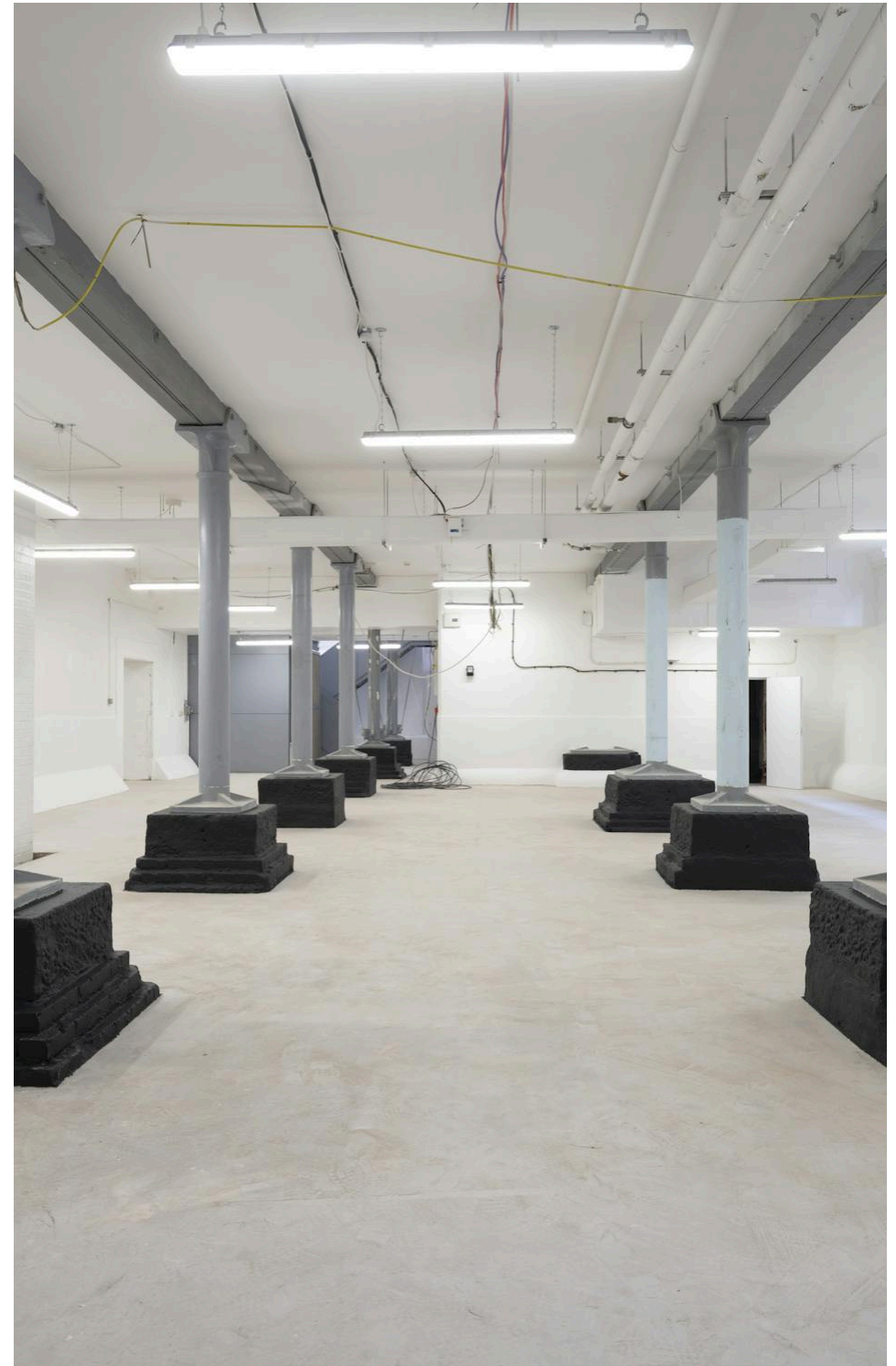
Fitout

Not Fitted

Description

The Ground and Lower Ground floors at 10a Northburgh Street provide a self contained warehouse style unit. The glass frontage provides excellent branding opportunities for any potential occupier. The space is connected via an internal staircase and benefits from original cast iron columns throughout.

The space could work for a variety of users such as Office, Showroom, Gym or Leisure users.



For Rent

10a Northburgh Street
Clerkenwell EC1V

Click to Play



For Rent

10a Northburgh Street
Clerkenwell EC1V

Internal

Size

7,102 Ft²

Rent

£35 per sq ft

Fitout

Not Fitted



Compton

For Rent

10a Northburgh Street
Clerkenwell EC1V

Internal



Compton

6 — 15

For Rent

10a Northburgh Street
Clerkenwell EC1V

Internal



Internal

For Rent

10a Northburgh Street
Clerkenwell EC1V

Location

Nestled in the vibrant heart of Clerkenwell & Farringdon, Northburgh House on Northburgh Street offers a hidden gem of an office location that is both secluded and well-connected.

Surrounded by a thriving community of independent coffee shops, timeless British pubs, and renowned dining establishments, this area is a sought-after destination for tech start-ups, headquarters, and creative enterprises.

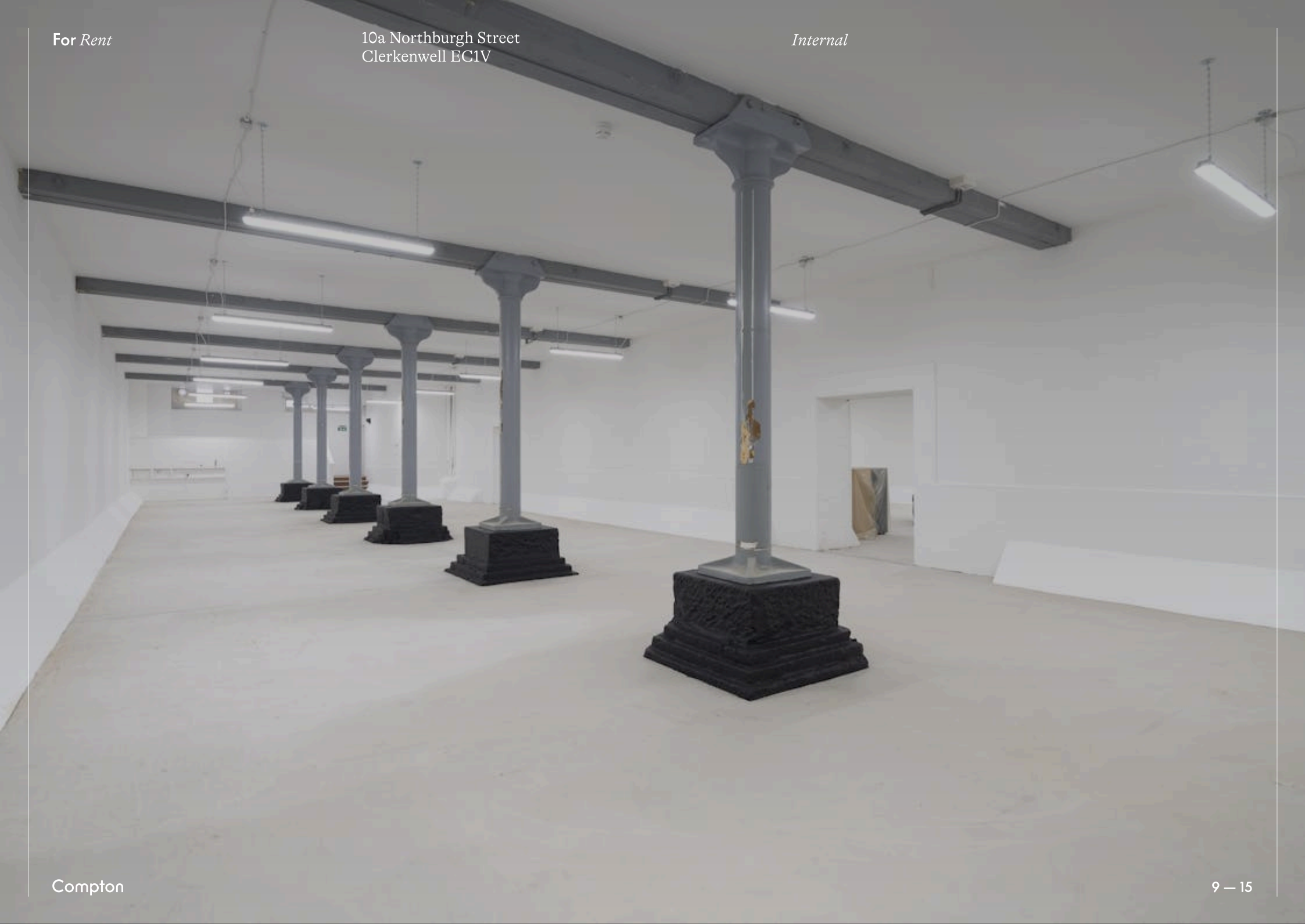
The property enjoys excellent transport links to Farringdon, Barbican, and Old Street stations, making it easy for occupiers and their staff to travel in and out of the city. The arrival of the highly anticipated Elizabeth Line (Crossrail) has only enhanced the already exceptional connectivity of this prime location.



For Rent

10a Northburgh Street
Clerkenwell EC1V

Internal



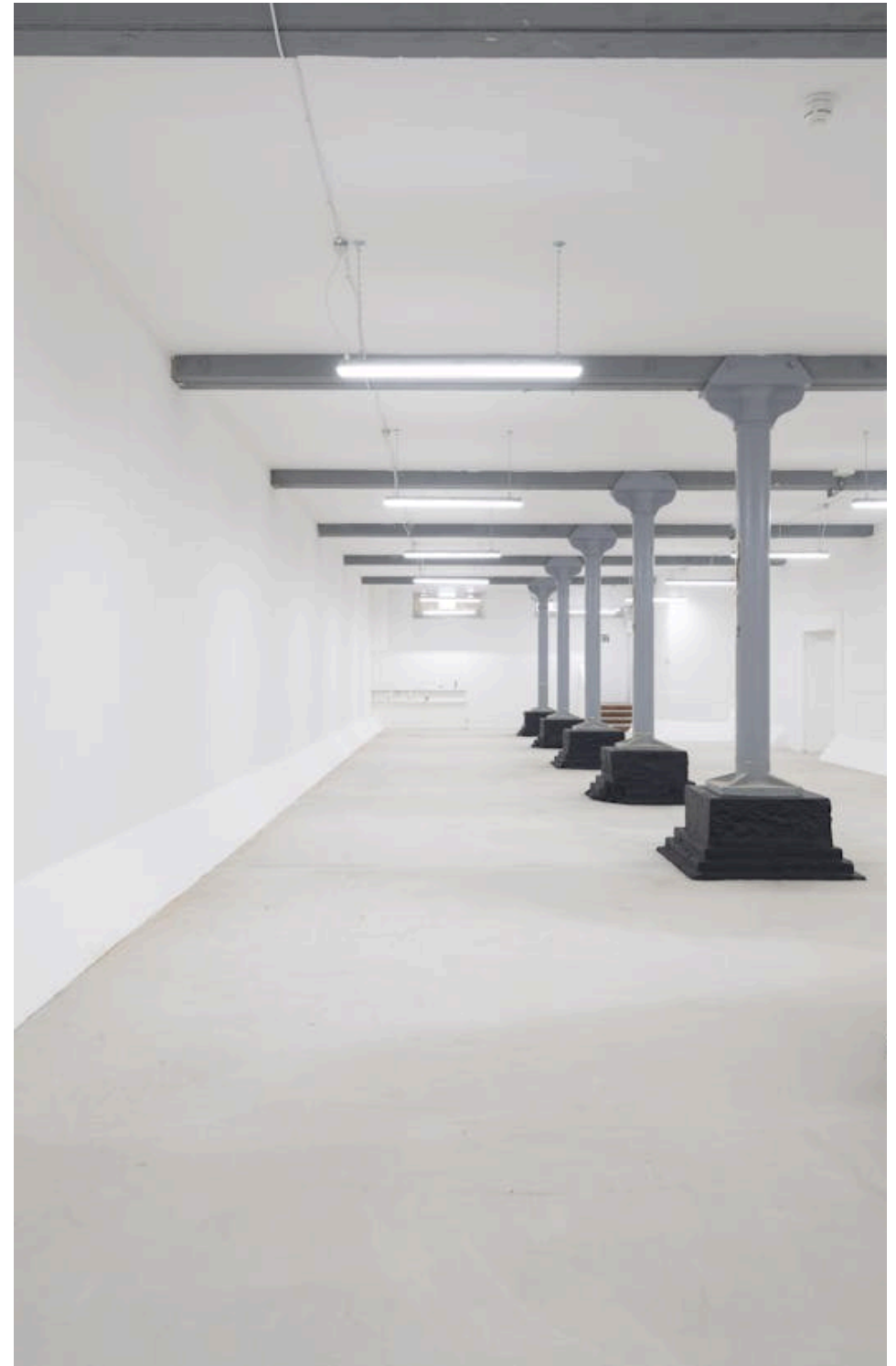
For Rent

10a Northburgh Street
Clerkenwell EC1V

Amenities

- Fully self-contained
- Ground & Lower Ground Duplex
- Shell and Core finish
- DDA compliant lift
- Glass window frontage
- Branding opportunities
- Warehouse style building
- Suitable for a variety of uses
- Excellent floor to ceiling height

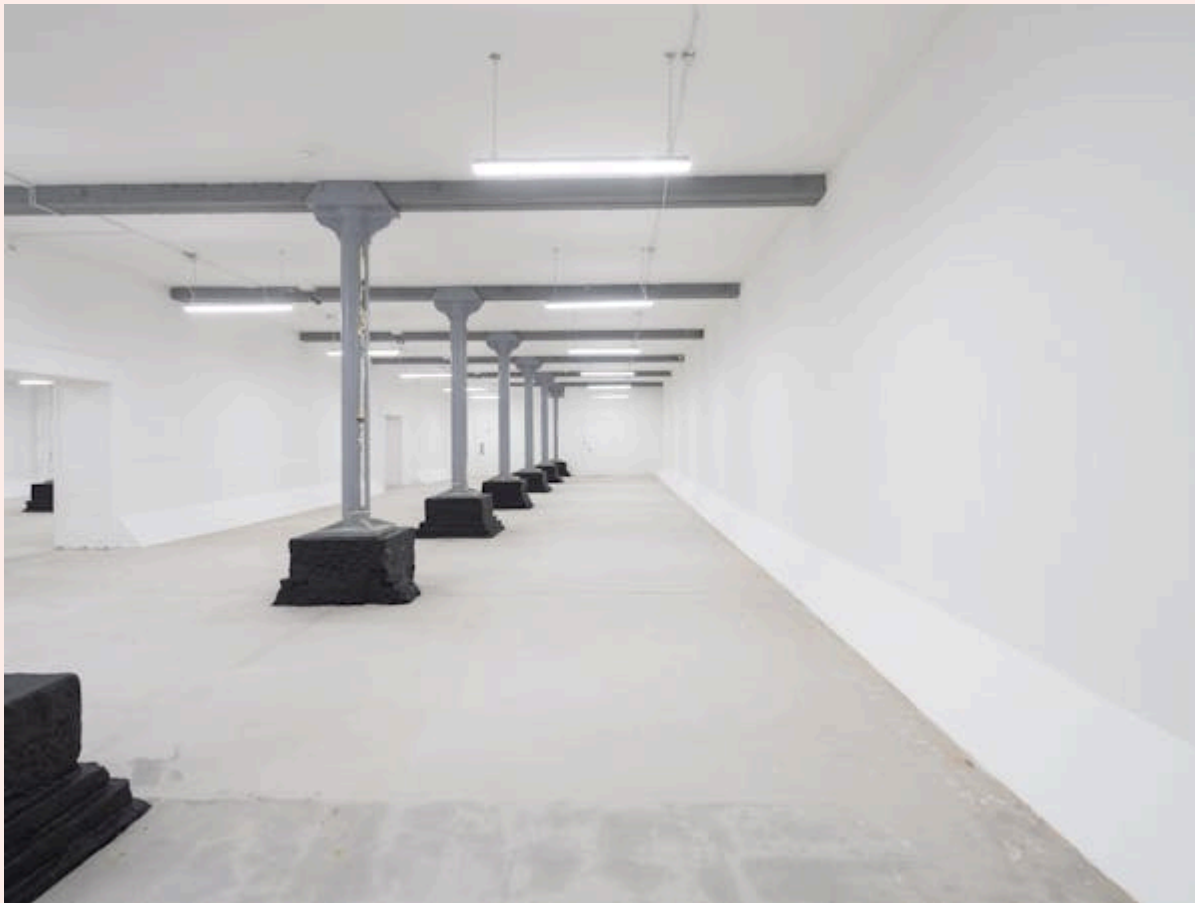
Compton



For Rent

10a Northburgh Street
Clerkenwell EC1V

Internal



Internal

For Rent		10a Northburgh Street Clerkenwell EC1V				Availability		
Name	Sq Ft	Rent (Sq Ft)	Rates Payable (Sq Ft)	Service Charge (Sq Ft)	Total /Sq Ft	Total Month	Total Year	Availability
Unit - Ground & Lower Ground	7,102	£35	£9.88	£12.30	£57.18	£33,841.03	£406,092.36	Available

For Rent

10a Northburgh Street
Clerkenwell EC1V

Terms

New full repairing & insuring lease
available for a term by arrangement
direct from the Landlord.

VAT

The property is elected for VAT.

Local Authority

The London Borough of Islington.

Tenure

New Lease

Availability

Available Immediately

Compton Concierge

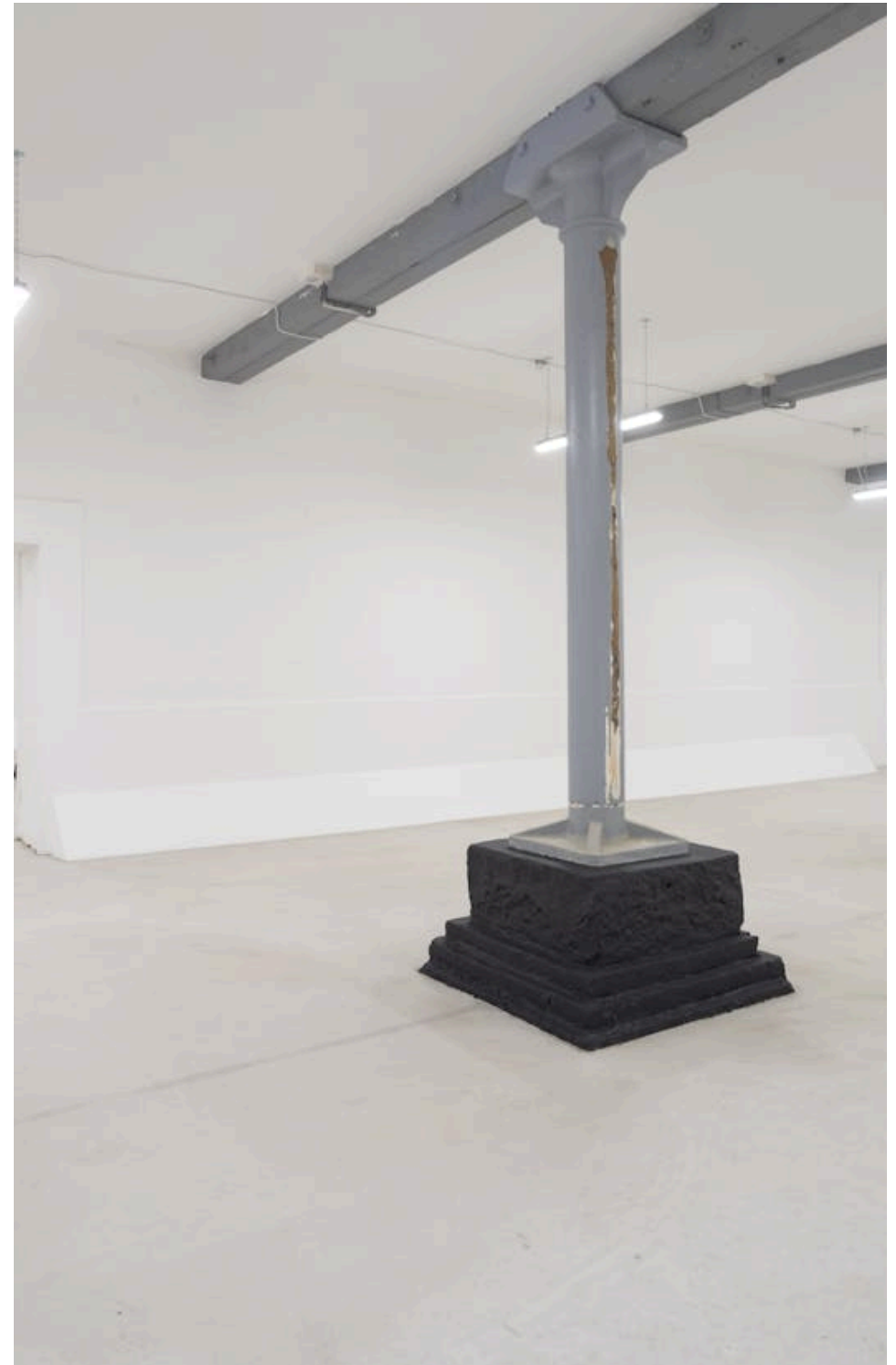
Want your workspace *managed*?

Find out more

compton.london/concierge

Content

Watch the Film
(click button)



Compton

Contact Us

compton.london

020 7101 2020

enquiries@compton.london

All appointments to view must be arranged via sole agents, Compton, through:



Josh Perlmutter

jp@compton.london

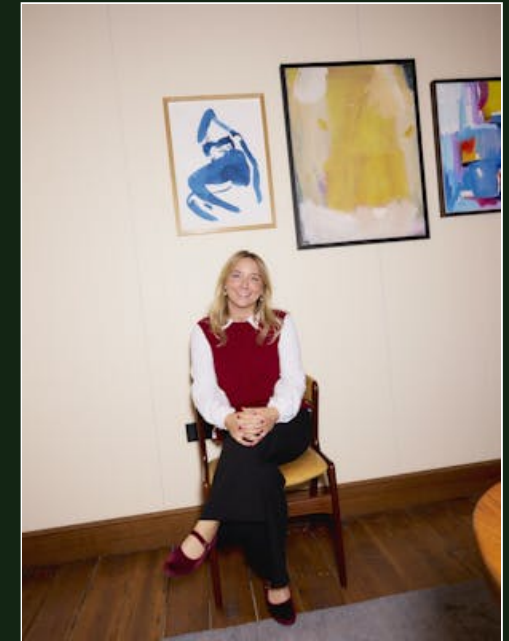
0207 101 2020 | 07814 699 096



Michael Raibin

mr@compton.london

0207 101 2020 | 07880 795 679



Emma Higgins

eh@compton.london

0207 101 2020 | 07769 605 295