



Flat 16, Vernon Court London Road, Portsmouth

Offers in Region of £80,000

 chinneckshaw



## Flat 16

Vernon Court London Road, Portsmouth

This purpose built flat is located in Vernon Court, London Road and we think would be a perfect investment for someone. With a short Lease we would point out this would only be suitable for cash buyers. There are a number of local amenities within walking distance and the property is within easy access of the M275 and M27 for easy commuting.

Requiring complete refurbishment it has a large Lounge with Kitchen off that and a good size double Bedroom. The bathroom has a fitted suite with bath, wash hand basin and WC.

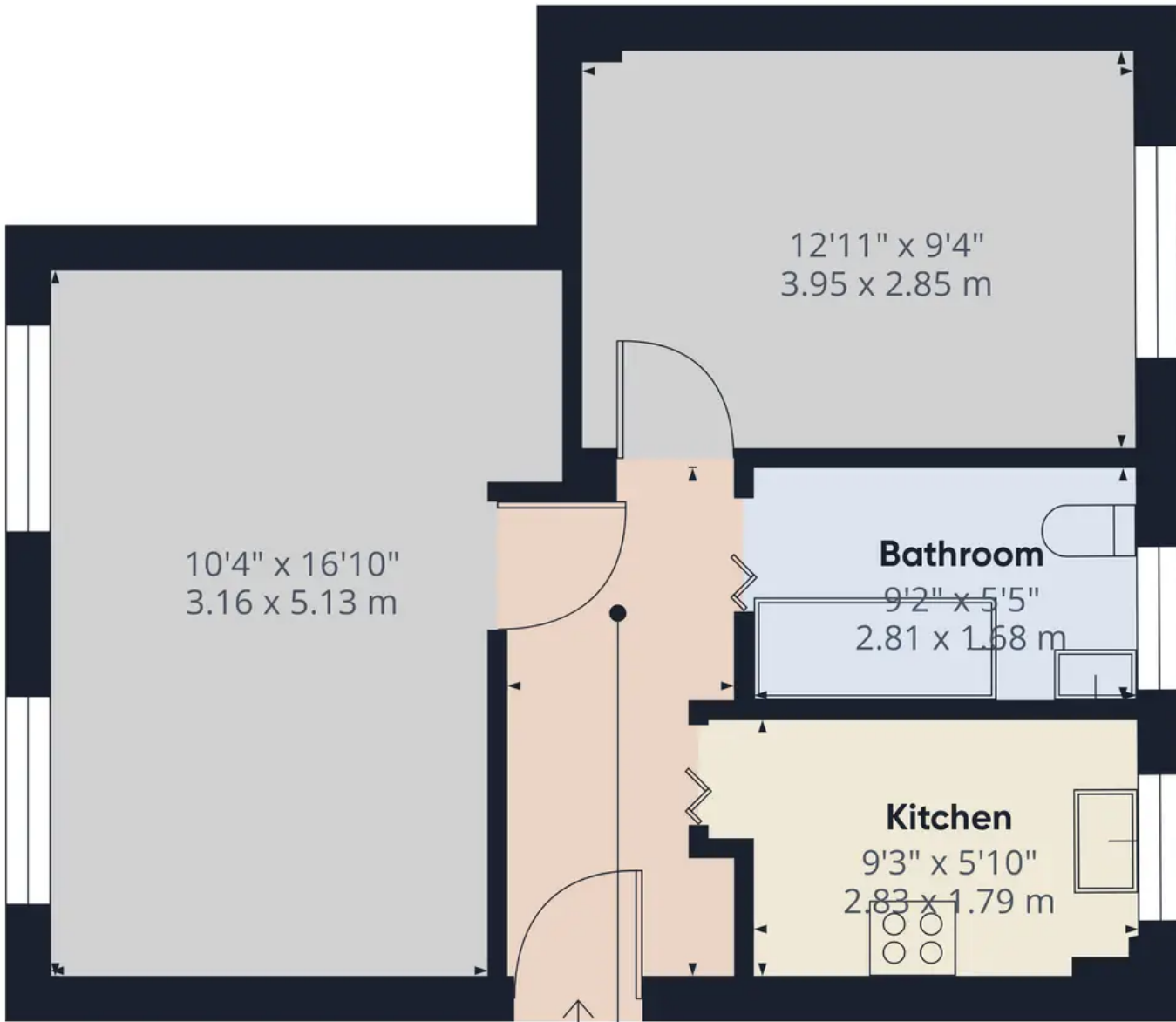
All in all we think this would make a great flat and a good future investment for someone. For more information and to book a viewing please contact us on 02392 826731

Tenure: Leasehold. The Lease is 99 years from 2/5/1974 so has around 49 years remaining

Service charge is half yearly - 25th December 2023 - 23rd June 2024 is £533.85

Council Tax band: A





10'4" x 16'10"  
3.16 x 5.13 m

12'11" x 9'4"  
3.95 x 2.85 m

**Bathroom**

9'2" x 5'5"  
2.81 x 1.58 m

**Kitchen**

9'3" x 5'10"  
2.83 x 1.79 m

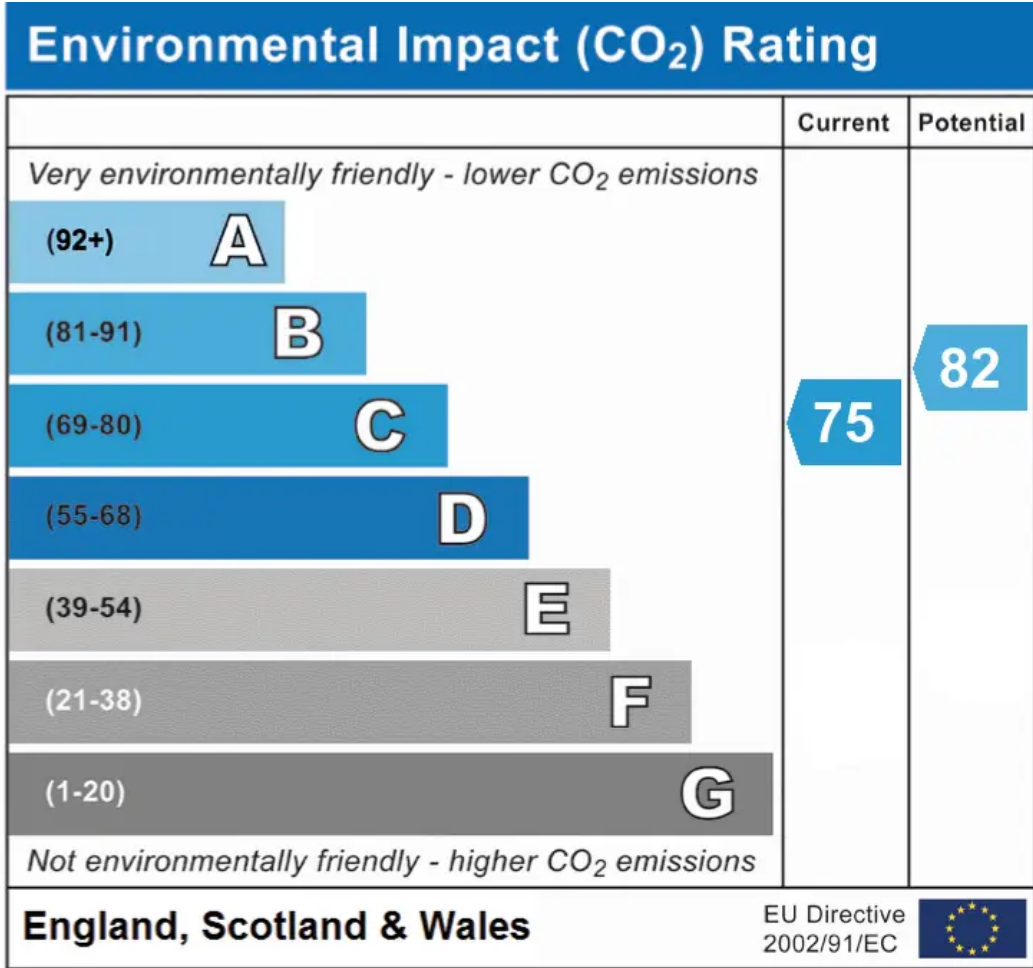
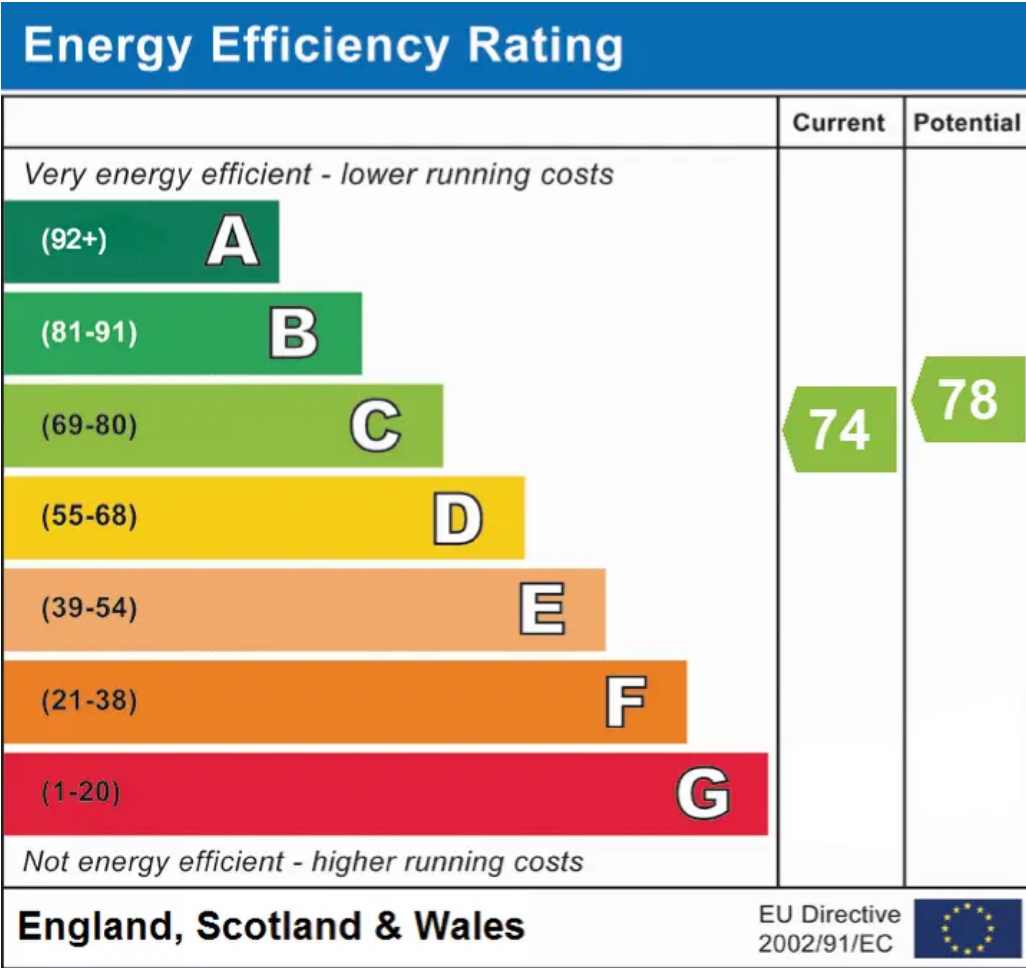
**Hallway**  
5'2" x 11'9"  
1.59 x 3.60 m

**Approximate total area<sup>1)</sup>**  
474.33 ft<sup>2</sup>  
44.07 m<sup>2</sup>

Excluding balconies and terraces

While every attempt has been made to ensure accuracy, all measurements are approximate, not to scale. This floor plan is for illustrative purposes only.

**GIRAFFE360**



## Chinneck Shaw

Bridge House, Milton Road, Portsmouth – PO3 6AN

023 9282 6731

hello@chinneckshaw.co.uk

www.chinneckshaw.co.uk/

Chinneck Shaw, Bridge House, Milton Road, PO3 6AN Consumer Protection from Unfair Trading Regulations 2008: These details are for guidance only and complete accuracy cannot be guaranteed. If there is any point which is of particular importance, verification should be obtained. The do not constitute a contract or part of a contract. All measurements are approximate. No guarantee can be given with regard to planning permissions or fitness for purpose. No apparatus, equipment, fixture or fitting has been tested. Items shown in the photographs are NOT necessarily included. Interested Parties are advised to check availability and make an appointment to view before travelling to see a property.