



61 Bridport Way, Braintree

£550,000 Freehold

Six Bedroom Detached House • Situated Within The Sought After Kings Park Development • Arranged Over Three Floors • Open Plan Bespoke Kitchen/Dining Room • Newly Decorated & Flooring Throughout • Main Bedroom With En Suite Shower Room • Detached Garage And Off Street Parking • Local Transport Links & Lyons Hall Primary School Catchment





Guide Price £550,000 - £600,000 Luxurious 6 bed detached house in prestigious Kings Park development. Open-plan kitchen & dining. Recently decorated with new flooring. Ensuite in main bedroom. Detached garage & off-street parking. Close to transport links & Lyons Hall Primary School.

Council Tax band: F

Tenure: Freehold

EPC Energy Efficiency Rating: C

EPC Environmental Impact Rating: D

- Six Bedroom Detached House
- Situated Within The Sought After Kings Park Development
- Arranged Over Three Floors
- Open Plan Bespoke Kitchen/Dining Room
- Newly Decorated & Flooring Throughout
- Main Bedroom With En Suite Shower Room
- Detached Garage And Off Street Parking
- Local Transport Links & Lyons Hall Primary School Catchment



Porch

4' 8" x 4' 5" (1.43m x 1.35m)

Living Room

16' 1" x 14' 1" (4.90m x 4.30m)

Kitchen Dining Room

9' 0" x 25' 8" (2.74m x 7.82m)

Study

7' 0" x 6' 4" (2.13m x 1.92m)

Sitting Room

9' 0" x 8' 10" (2.74m x 2.70m)

Utility

5' 5" x 7' 0" (1.65m x 2.13m)

Hallway

13' 7" x 6' 0" (4.15m x 1.83m)

Bedroom One

11' 2" x 14' 2" (3.40m x 4.32m)

Bedroom Two

11' 3" x 11' 10" (3.43m x 3.60m)

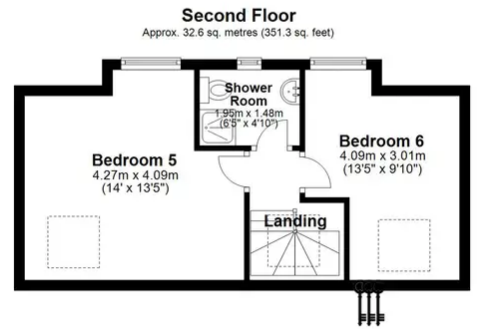
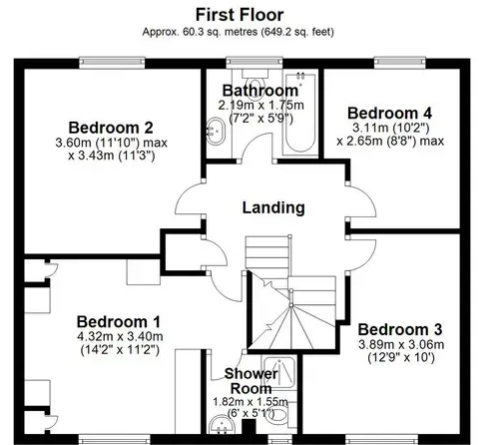
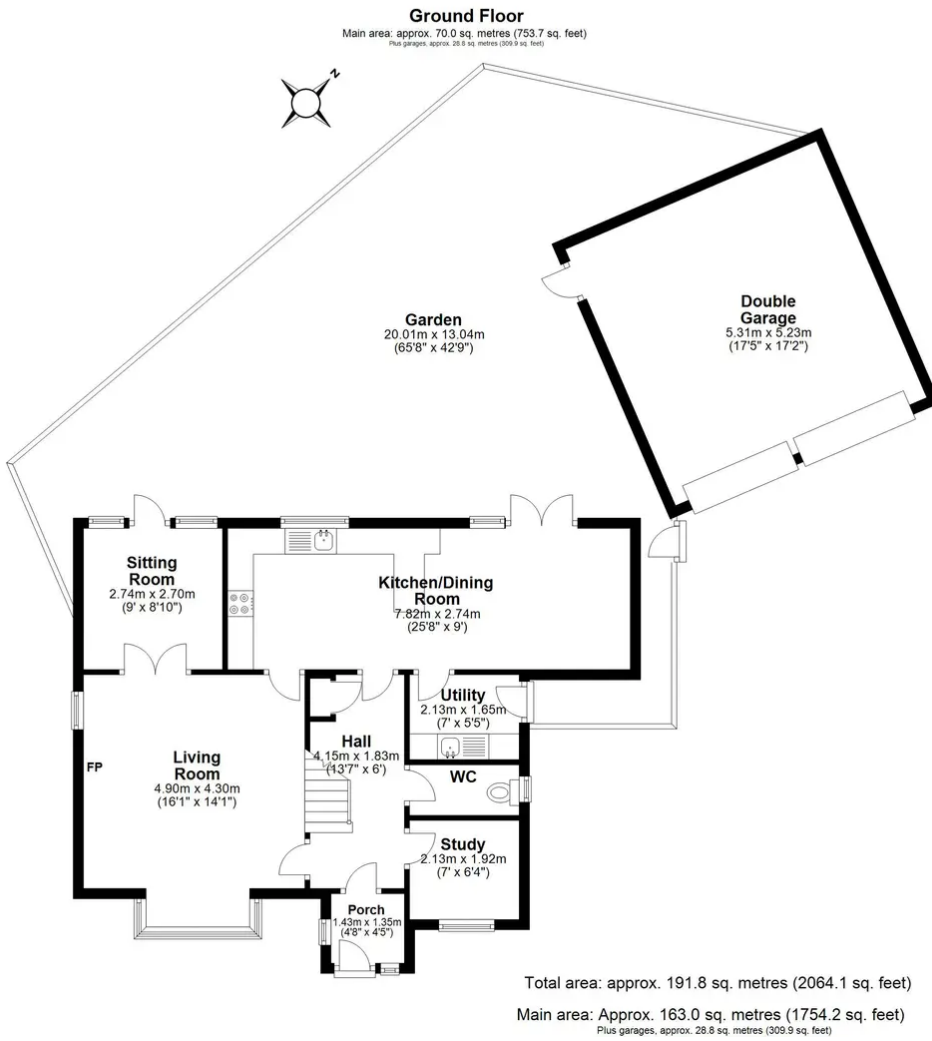
Bedroom Three

12' 9" x 10' 0" (3.89m x 3.06m)

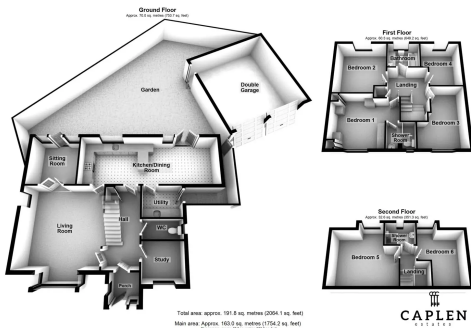
Bedroom Four

8' 8" x 10' 2" (2.65m x 3.11m)

Bathroom



CAPLEN
estates



You can include any text here. The text can be modified upon generating your brochure.

CAPLEN
estates