



HARRISON
Sales &
Lettings
HARDEN

Wellesley Close, Moreton-In-Marsh



A beautifully presented Cotswold stone five double bedroom detached family home in Moreton-in-Marsh offering stylish and well-proportioned accommodation.

An impressive double fronted property with beautiful wooden porch and Cotswold stone wall surround. Inside to the left, is a good-sized study which would make an ideal home office, with views over the open space of the Fire Service College.

Further into the property, the utility room/downstairs cloakroom benefits from an integrated washing machine and other useful storage space.

The spacious sitting room with bifold doors opens out to the garden.

The kitchen-diner has contemporary white shaker style units and grey worktops providing an abundance of storage and including an integrated dishwasher, electric oven and gas hob, with bifold doors opening up the space into the pretty rear garden.



A second reception room downstairs could be ideal for a snug, a playroom or a dining room.



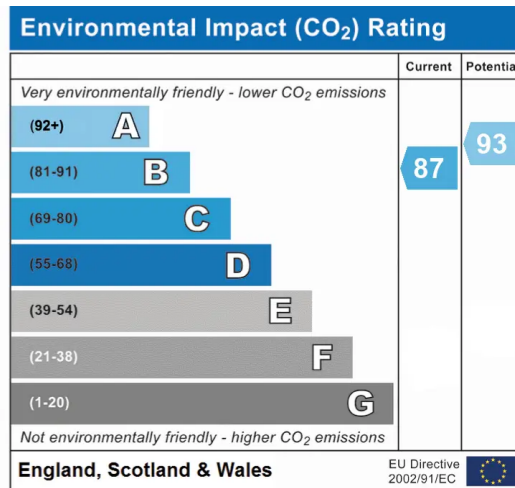
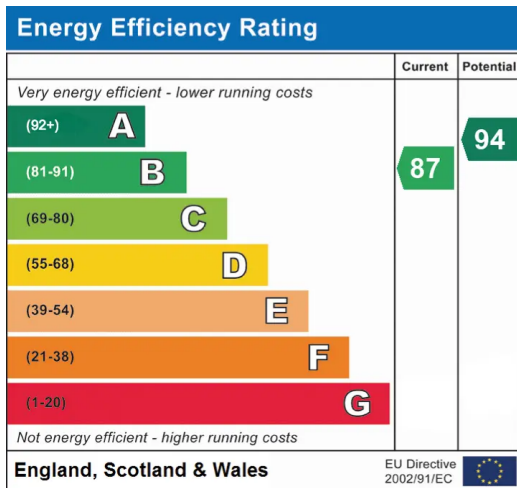
Upstairs, there are five double bedrooms - two benefitting from modern en-suites with walk-in showers, sink and w/cs. The principal bedroom also features built-in wardrobes.

To the rear, there is a spacious garden with generous lawn space and trees along the back fence providing privacy. The patio provides adequate space for seating - allowing you to enjoy a relaxing sunny afternoon in the garden.

Outside to the front there is a double garage with driveway parking for two cars.

Moreton in Marsh is a north Cotswold town offering a broad range of local amenities, with library, post office, primary school, North Cotswold Hospital, sports facilities, and a swimming pool which is open to the public at the renowned Fire College. There are various pubs, hotels, supermarkets and many independent shops.

Moreton-in- Marsh is also host to the largest street market in the Cotswolds which runs every Tuesday, is a stones throw away from Batsford Arboretum and Gardens, the Cotswold Falconry Centre, and with the award winning Daylesford Organic Farm and Stores just around the corner. Moreton-In-Marsh also has a mainline station with a direct services running regularly between Worcester and London Paddington.

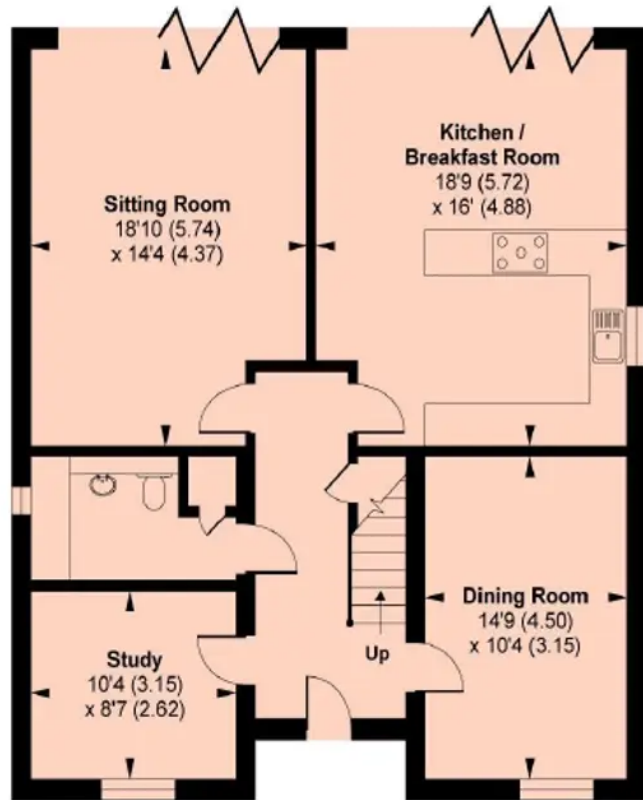


Wellesley Close, Moreton-in-Marsh, GL56

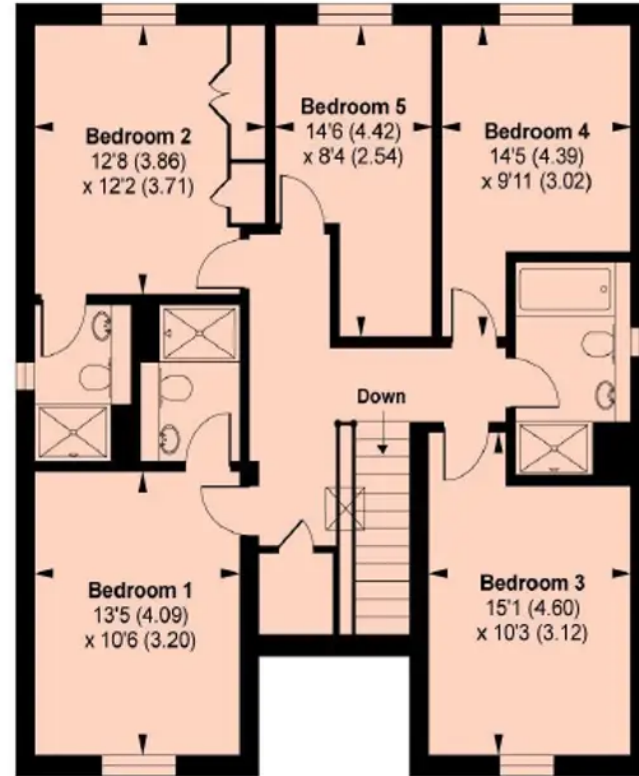
MAIN HOUSE APPROX. GROSS INTERNAL FLOOR AREA 2044 SQ FT 189.8 SQ METRES

GARAGE APPROX. GROSS INTERNAL FLOOR AREA 386 SQ FT 35.8 SQ METRES

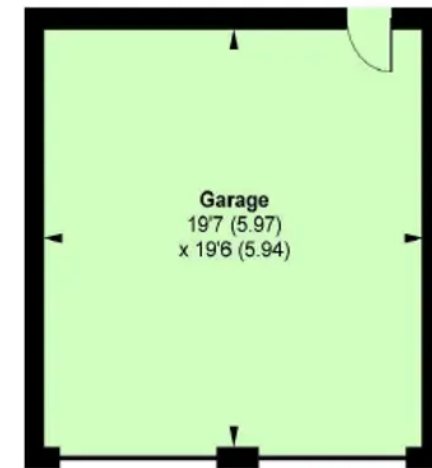
TOTAL APPROX. GROSS INTERNAL FLOOR AREA 2430 SQ FT 225.7 SQ METRES



GROUND FLOOR



FIRST FLOOR



Whilst every attempt has been made to ensure the accuracy of the floor plan contained here, measurements of doors, windows and rooms are approximate and no responsibility is taken for any error, omission or misstatement. These plans are for representation purposes only as defined by RICS Code of Measuring Practice and should be used as such by any prospective purchaser. Specifically no guarantee is given on the total square footage of the property if quoted on this plan. Any figure given is for initial guidance only and should not be relied on as a basis of valuation.

Harrison Hardie

17, High Street, Moreton-In-Marsh GL56 0AF

harrisonhardie.co.uk 01608 651000