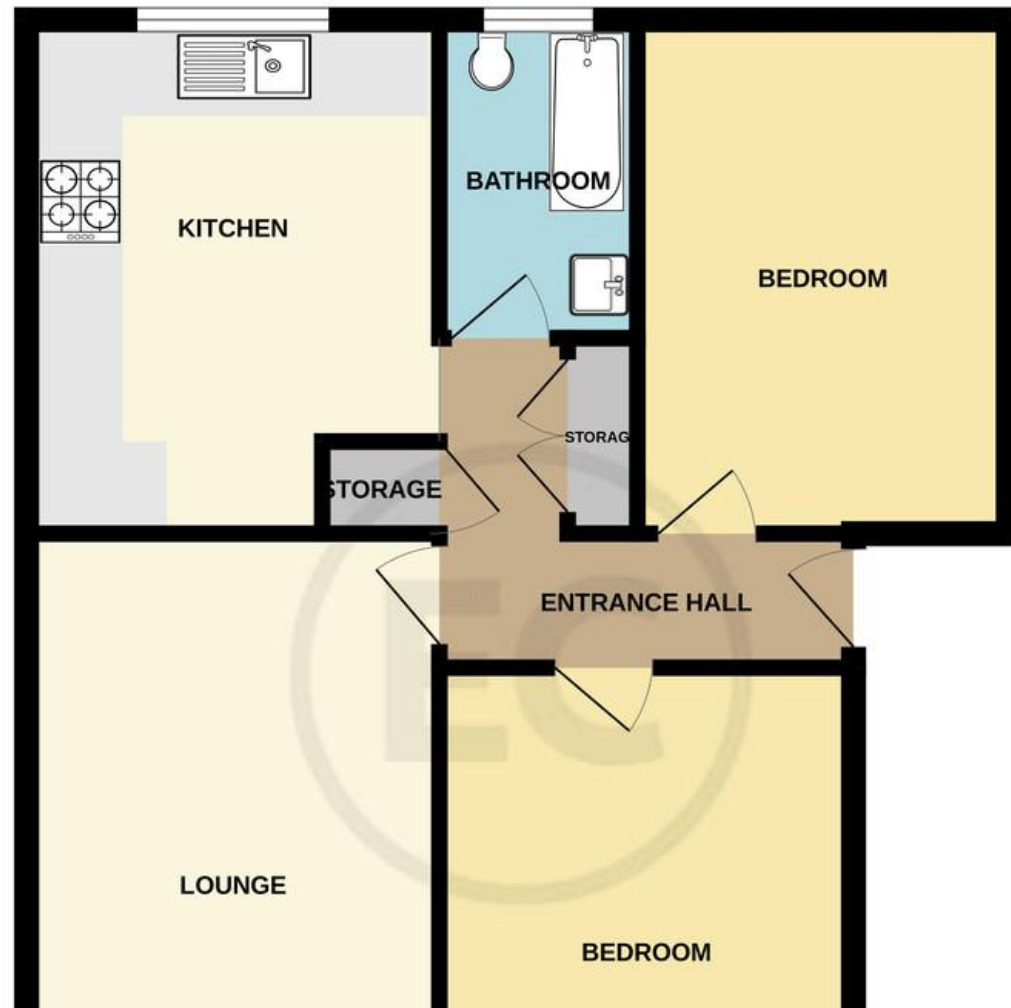


GROUND FLOOR
599 sq.ft. (55.6 sq.m.) approx.



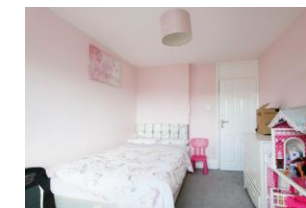
%epcGraph_c_1_500%

EC Essex Countryside
Moving home made easier.



17 Worcester Drive, Rayleigh, SS6 8SU

£215,000



Step into the world of possibilities with this charming two-bedroom ground floor flat, strategically nestled near Rayleigh High Street. The prime location ensures you're not just buying a home; you're investing in a lifestyle enriched by the vibrant local amenities and seamless access to essential transport links.

This property isn't just a dwelling; it's a fantastic opportunity to take that crucial step onto the property ladder. Imagine the satisfaction of owning your own space, a place to call home, and the start of your property journey.



Alternatively, consider the potential for this flat as a lucrative buy-to-let opportunity. The proximity to the bustling High Street and easy reach of amenities and transportation make it an attractive option for potential tenants.

- GROUND FLOOR APARTMENT
- TWO DOUBLE BEDROOMS
- SPACIOUS LOUNGE
- BALCONY SEATING AREA
- COMMUNAL GARDENS
- PERFECT FOR FIRST TIME BUYERS
- CLOSE BY TO LOCAL AMENITIES
- CENTRAL LOCATION
- POTENTIAL INVESTMENT OPPORTUNITY



HALLWAY 7' 4" x 10' 4" (2.24m x 3.15m) Pendant lighting with laminate flooring throughout with doors leading to:

BEDROOM ONE 13' 1" x 9' 5" (3.99m x 2.87m) Pendant lighting with double glazed aspect to front, wall mounted radiator and carpet flooring.

BEDROOM TWO 12' 0" x 8' 5" (3.66m x 2.57m) Pendant lighting, wall mounted radiator, double glazed window to rear aspect and carpet flooring

BATHROOM 7' 4" x 4' 6" (2.24m x 1.37m) Smooth ceiling, pendant lighting, Obscure double glazed window to rear, low level W/C, hot and colder mixer tap, multi usage shower unit with rainfall shower head attachment, hand basin with vanity unit, bath with paneling, tiled splash back and laminate flooring.

LOUNGE 9' 6" x 16' 6" (2.9m x 5.03m) Pendant lighting, wall mounted radiator, laminate flooring, double glazed window to front aspect, double glazed double doors to balcony front aspect over looking communal area with seating area and railings.

KITCHEN 11' 7" x 11' 4" (3.53m x 3.45m) Smooth ceiling, pendant lighting, laminate flooring, laminate wooden finish worktops, range of wall and base units, stainless steel drainer unit and sink, hot and cold mixer taps, space for integrated appliances and pantry.