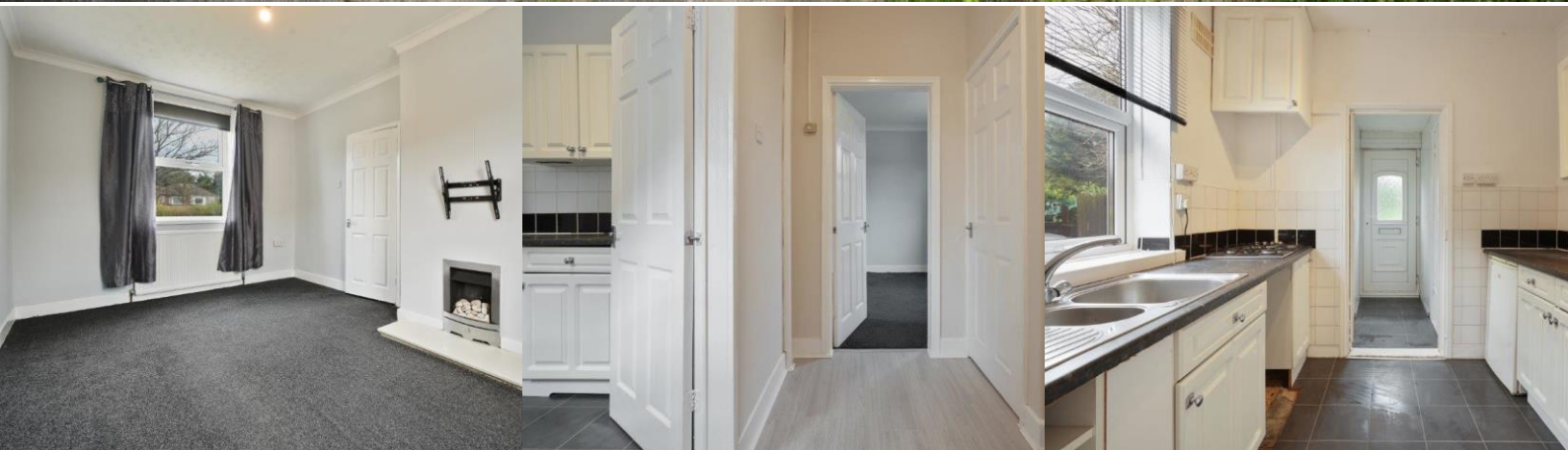


# Crucible Homes



Halifax Road  
Sheffield, S6 1AE

Asking Price Of  
£130,000

## Overview

Semi-Detached

Two Bedroom

Driveway

Detached Garage

Good Sized Enclosed Garden

No Onward Chain



## Description

If you are a first-time buyer or property investor, then look no further!

Offered for sale with no onward chain is this well presented, two bedroomed semi-detached home.

Set back from Halifax Road with driveway parking for several cars, leading to a detached garage and good sized mainly lawned garden.

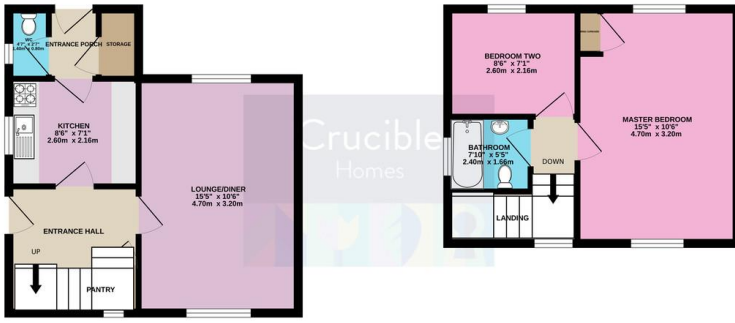
Briefly comprising entrance hall, fitted kitchen, downstairs W.C, separate store room, lovely light through lounge, large main bedroom, bedroom two, bathroom with shower over bath.

Viewing highly recommended to appreciate the accommodation on offer.



GROUND FLOOR  
333 sq.ft. (30.9 sq.m.) approx.

1ST FLOOR  
293 sq.ft. (27.3 sq.m.) approx.



TOTAL FLOOR AREA: 626 sq.ft. (58.2 sq.m.) approx.  
 Whilst every effort has been made to ensure the accuracy of the foregoing contained here, measurements of doors, windows, rooms and any other items are approximate and no responsibility is taken for any error, omission or mis-statement. This plan is for illustrative purposes only and should be used as such by any prospective purchaser. The services, systems and appliances shown have not been tested and no guarantee as to their operability or efficiency can be given.  
 Made with Metropix ©2024

Score	Energy rating	Current	Potential
92+	A		
81-91	B		84 B
69-80	C		
55-68	D	56 D	
39-54	E		
21-38	F		
1-20	G		

