



All measurements are approximate and for display purposes only



Wentworth Road, Temple Fortune, NW11
Guide Price : £950,000

Exclusive marketing agent on this this charming 3 bedroom detached house in Temple Fortune. Arranged over two floors and extending to 1129 square ft (104 sq m) with huge potential to extend up and at the rear as many other houses in the road have already done. (STPP).

Comprising entrance hall intercommunicating reception rooms, fitted kitchen with utility room. On the first floor there is a large main bedroom, with potential for an ensuite. A further double bedroom and a large single bedroom. Outside there is a private west facing rear garden, approximately 79ft in length and a deep frontage set back from the road, conveniently located towards the bottom end of this popular road within walking distance of shops in Temple Fortune including M&S and Waitrose with individual boutiques within walking distance of Golders Green station and Hampstead Heath Extension.

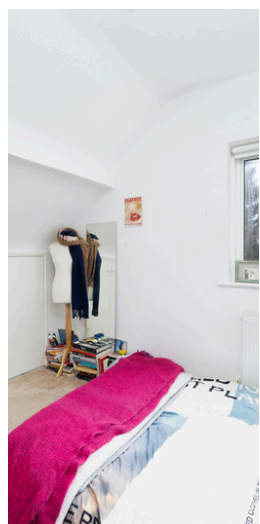
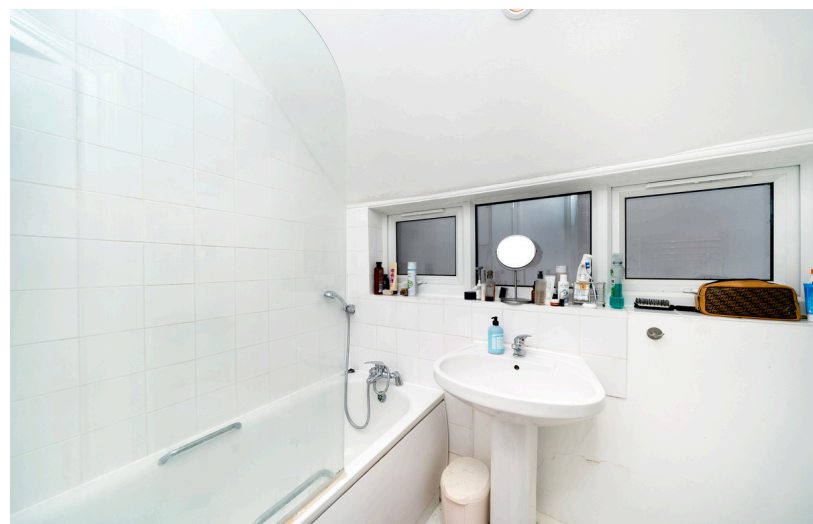
We highly recommend an internal viewing.



903-905 Finchley Road Golders Green London NW11 7PE
 Telephone 020 8381 4970 Email info@moreland.uk.com

Registered Office Unit 8, Alpha Business Park, Travellers Close, Welham Green AL9 7NT Registered in England No. 3663497 Vat No. 701775936
 Residential Sales Lettings Full Management Financial Services New Homes





Tenure Freehold



1129 sqft / 104.9 sqm



3 Bedrooms



1 Bathroom



Permit

Score	Energy rating	Current	Potential
92+	A		
81-91	B		
69-80	C	71 C	79 C
55-68	D		
39-54	E		
21-38	F		
1-20	G		