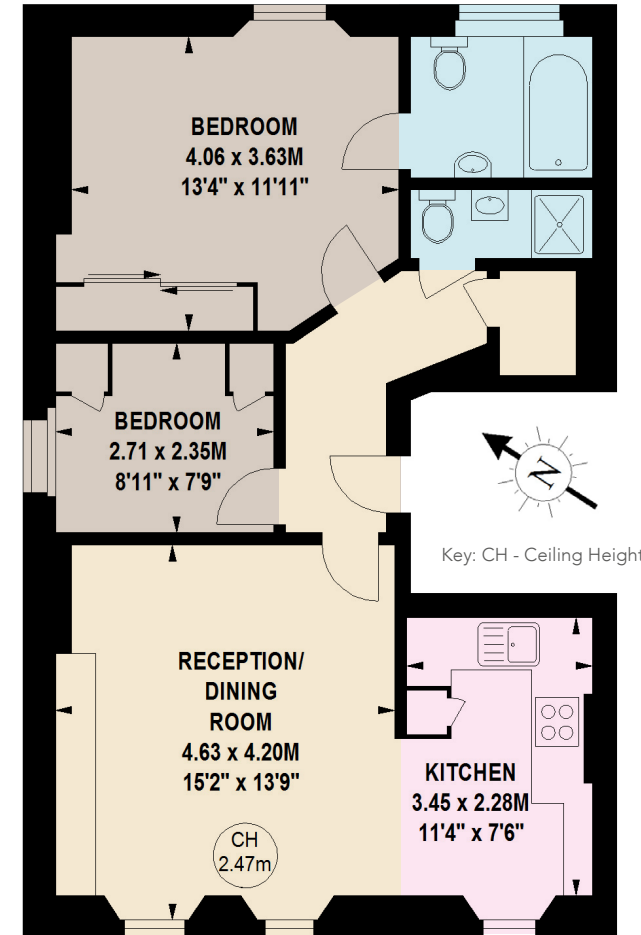




RUTLAND GATE

KNIGHTSBRIDGE SW7



THIRD FLOOR

Approximate Gross Internal Area
687 Sq Ft / 63.82 Sq M

A well-presented two bedroom apartment located on the third floor (no lift) of this imposing Grade II listed period building enjoying west facing views over the garden square.

This apartment, which has been a successful rental investment for the vendor, measures 687 sq ft, has an open plan reception room, principal bedroom with en suite bathroom, second bedroom/study and a second bathroom.

Rutland Gate is moments away from the open space of Hyde Park as well as the internationally renowned department stores Harrods and Harvey Nichols and the designer boutiques of Sloane Street.



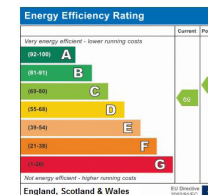
FEATURES

- Principal Bedroom with En-Suite Bathroom
- Double Bedroom
- Family Bathroom
- Reception/Dining Room
- Kitchen

PRICE: £1,195,000

TENURE: Share of Freehold With 973 Years Remaining

SERVICE CHARGE: Approx £4,034 per annum



NVP
NICOLAS VAN PATRICK

6-8 MONTPELIER STREET,
LONDON SW7 1EZ
SALES | +44 (0)20 7581 8277
LETTINGS | +44 (0)20 7590 1200

info@nicolasvanpatrick.com
www.nicolasvanpatrick.com

These details have been prepared for general guidance only and should not be relied upon by prospective purchaser/ tenants who before proceeding must check and otherwise satisfy themselves as to the property and the nature, state and availability of any facility or service.