



- BEAUTIFULLY PRESENTED DETACHED BUNGALOW
- SITUATED IN AN ELEVATED POSITION CLOSE TO TOWN
- ENJOYING WONDERFUL SEA AND COUNTRYSIDE VIEWS
- SITTING ROOM, OPEN PLAN KITCHEN DINER
- FOUR BEDROOMS, ONE EN-SUITE, FAMILY SHOWER ROOM
- GARAGE AND PARKING
- FRONT AND REAR GARDENS, SUMMER HOUSE/HOME OFFICE
- UPVC DOUBLE GLAZING, GAS CENTRAL HEATING

Summerland Avenue, Dawlish, EX7 9LR

£525,000

A beautifully presented four bedroom detached bungalow situated in an elevated position close to town enjoying wonderful panoramic sea and countryside views. The property has accommodation briefly comprising; sitting room, open plan kitchen diner, four bedrooms, master en-suite, family shower room, garage, parking, summer house/home office, uPVC double glazing, gas central heating.



Property Description

A beautifully presented four bedroom detached bungalow situated in an elevated position close to town enjoying wonderful panoramic sea and countryside views. The property has accommodation briefly comprising; sitting room, open plan kitchen diner, four bedrooms, master en-suite, family shower room, garage, parking, summer house/home office, uPVC double glazing, gas central heating.

An early viewing comes highly recommended.

uPVC double glazed front door open into...

RECEPTION PORCH

with cupboard housing consumer unit and electric meter, shoe and coat cupboard, radiator. Glazed door through to...

RECEPTION HALL

With loft access hatch, radiator, Karndean flooring. Double doors opening to...

SITTING ROOM

With uPVC double glazed windows to front enjoying stunning sea and countryside views, wood burner, television aerial connection point, telephone point, radiator, uPVC double glazed sliding door to side, Karndean flooring.

KITCHEN/DINING ROOM

Open plan kitchen dining room with uPVC double glazed window to side aspect, two Velux windows. The kitchen area has a matching range of shaker style wall and vase units with sold oak work top over, double bowl Belfast ceramic sink with mixer tap, tiled splash backs, integrated appliances including two ovens, five ring gas hob, stainless steel extractor canopy over, eye level microwave. A central island provides further storage with a selection of drawers with solid oak work surface, uPVC double glazed door giving access to rear garden.

CLOAKROOM/UTILITY

uPVC obscure glazed double glazed window to side, close





coupled WC, base and high level units with solid oak work surface, inset stainless steel sink with mixer tap, space and plumbing for washing machine, Karndean flooring.

BEDROOM ONE

uPVC double glazed window to front enjoying spectacular sea and countryside views, radiator, power points. Door to...

EN-SUITE SHOWER ROOM

Double shower enclosure with glazed door, concealed cistern flush WC, inset wash hand basin into vanity unit, heated towel rail, Karndean flooring, ceiling spotlights.

BEDROOM TWO

uPVC double glazed window to rear, radiator, power points.

BEDROOM THREE

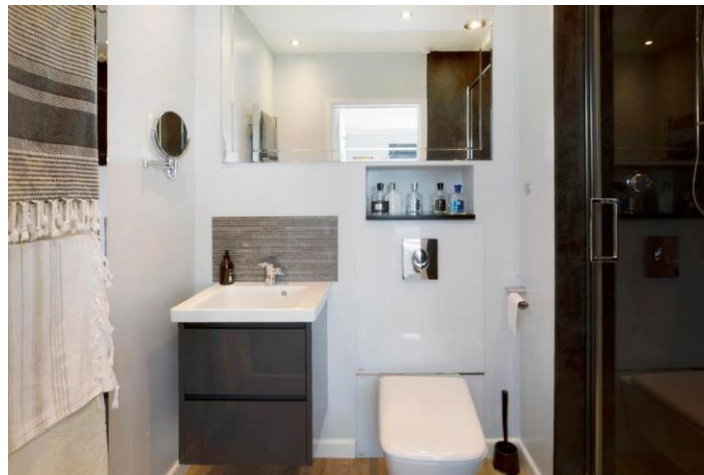
uPVC double glazed window to rear, radiator, power points.

BEDROOM FOUR

uPVC double glazed window to front with similar views to that of bedroom one, radiator, power points.

FAMILY SHOWER ROOM

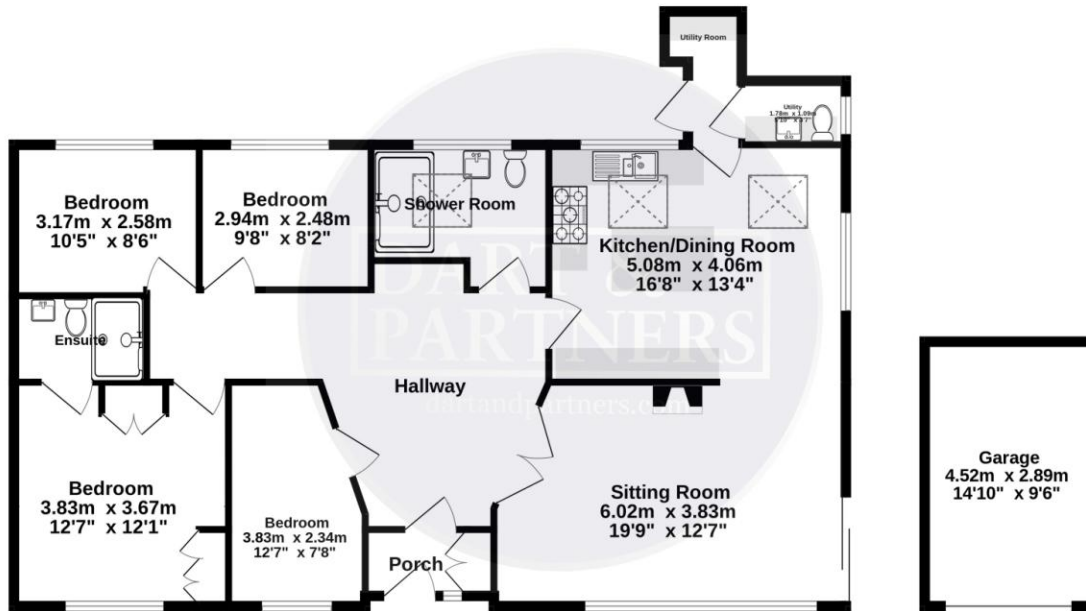
With Velux window, double shower enclosure with glazed door, concealed cistern flush WC, inset wash had basin into vanity unit, storage shelving, heated towel rail, Karndean flooring.



OUTSIDE

To the front is **DRIVEWAY PARKING. GARAGE** with electric roller door, power and light. **CAR PORT.** Outside water tap. Steps rise to the front of the property bordered by a selection of mature plants, shrubs and hedging. Pergola which incorporated privacy/sun blinds, perfect for alfresco dining and/or entertaining whilst enjoying the wonderful views on offer. The rear garden is terraced and predominantly laid to slate tiling and astro turf with a raised deck area, perfect for enjoying the sunshine. Summer house/home office enjoying wonderful views, perfect for those working from home.

Ground Floor
128.9 sq.m. (1388 sq.ft.) approx.



TOTAL FLOOR AREA : 128.9 sq.m. (1388 sq.ft.) approx.

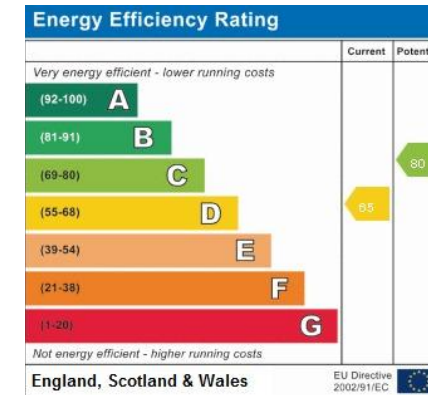
Whilst every attempt has been made to ensure the accuracy of the floorplan contained here, measurements of doors, windows, rooms and any other items are approximate and no responsibility is taken for any error, omission or mis-statement. This plan is for illustrative purposes only and should be used as such by any prospective purchaser. The services, systems and appliances shown have not been tested and no guarantee as to their operability or efficiency can be given.
 Made with Metroplan ©2024



MATERIAL INFORMATION - Subject to legal verification

Freehold
 Council Tax Band E

AGENTS NOTE: We have been advised that there is the potential to convert the loft subject to planning permission.



9 Queen Street, Dawlish, Devon,
 EX7 9HB

www.dartandpartners.com
 01626 862057
property@dartandpartners.com

Agents Note: Whilst every care has been taken to prepare these sales particulars, they are for guidance purposes only. All measurements are approximate and for general guidance purposes only and whilst every care has been taken to ensure their accuracy, they should not be relied upon and potential buyers are advised to recheck the measurements