

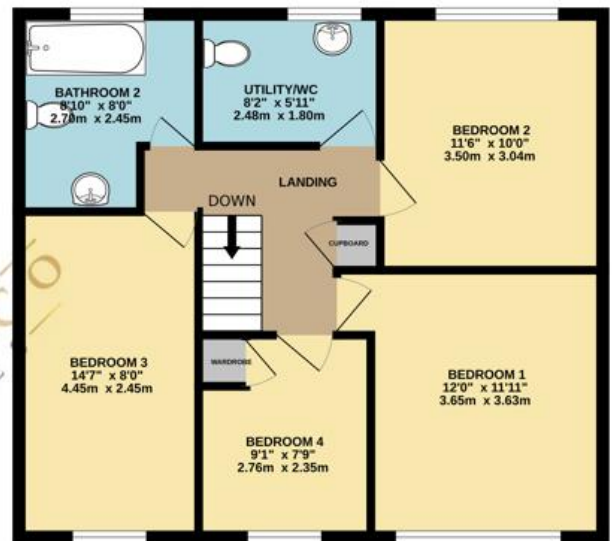
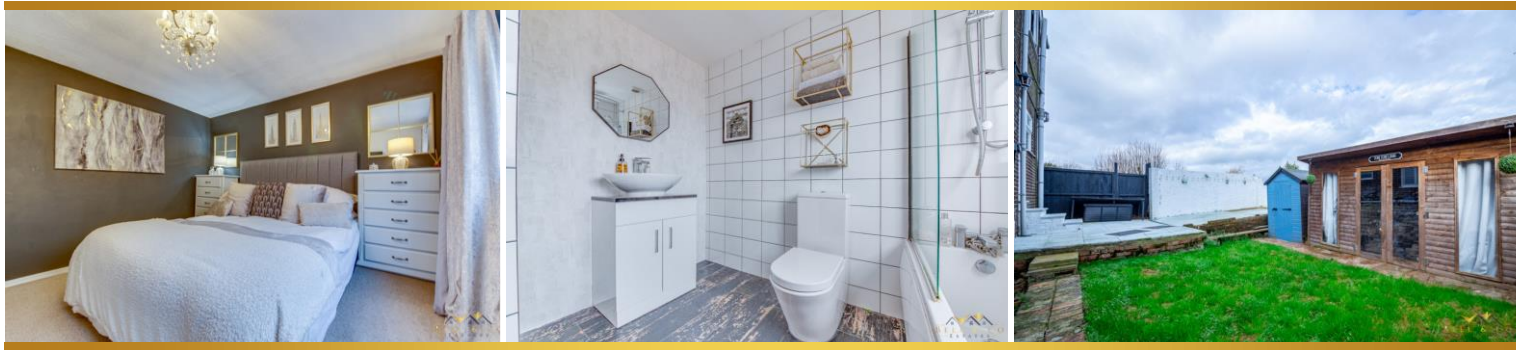


West Bank Drive | South Anston | S25 5HT

£340,000

Bell & Co Estates are delighted to present this beautiful, Four/Five Bedroom Detached home in the sought after village location of South Anston. Nestled on this popular street is this extended family home offering versatile living space to accommodate all family's needs. In brief the property comprises of a welcoming Entrance Hallway with storage cupboard and providing access to the formal Lounge with impressive Media Wall and electric fire with windows to the front and rear to allow a flow of natural light, to the rear is a newly fitted Modern Kitchen with integrated appliances, breakfast bar, Dining area and access to the rear garden as well as the Snug which could be used as Bedroom Five or an Office. To the upstairs are Four good-size Bedrooms and two-family Bathrooms, the main with shower over Bath, Sink and WC the other could be changed into an En-Suite for Bedroom Two. To the front of the property is a paved driveway providing off road parking, steps take you down to a lovely enclosed patio area with access to the side taking you to an enclosed rear garden.

- Large Family Home
- Four Good Size Bedrooms
- Newly fitted Kitchen
- Lounge with Media Wall
- Snug/Bedroom Five
- Modern throughout
- Off Road Parking
- Enclosed Rear Garden
- A Must See!



Contact Details

79 Wales Road
Kiveton Park
Sheffield
South Yorkshire
S26 6RA

www.bellcoestates.com

03333 580590

18, West Bank Drive
South Anston
SHEFFIELD
S25 5HT

Energy rating

E

Valid until
8 August 2027

Certificate number
8233-7128-5330-1351-8902

Property type

Detached house

Total floor area

121 square metres

Agents Note: Whilst every care has been taken to prepare these sales particulars, they are for guidance purposes only. All measurements are approximate and for general guidance purposes only and whilst every care has been taken to ensure their accuracy, they should not be relied upon and potential buyers are advised to recheck the measurements