

These superb detached three bedroom homes feature one large main bedroom with an ensuite, a double bedroom and single. The heart of this home is the open plan kitchen-diner, creating a lovely entertaining space for family and friends. In addition they also comprise of a downstairs cloakroom ensuring adequate storage space. Each home has a charming garden, garage and private driveway.



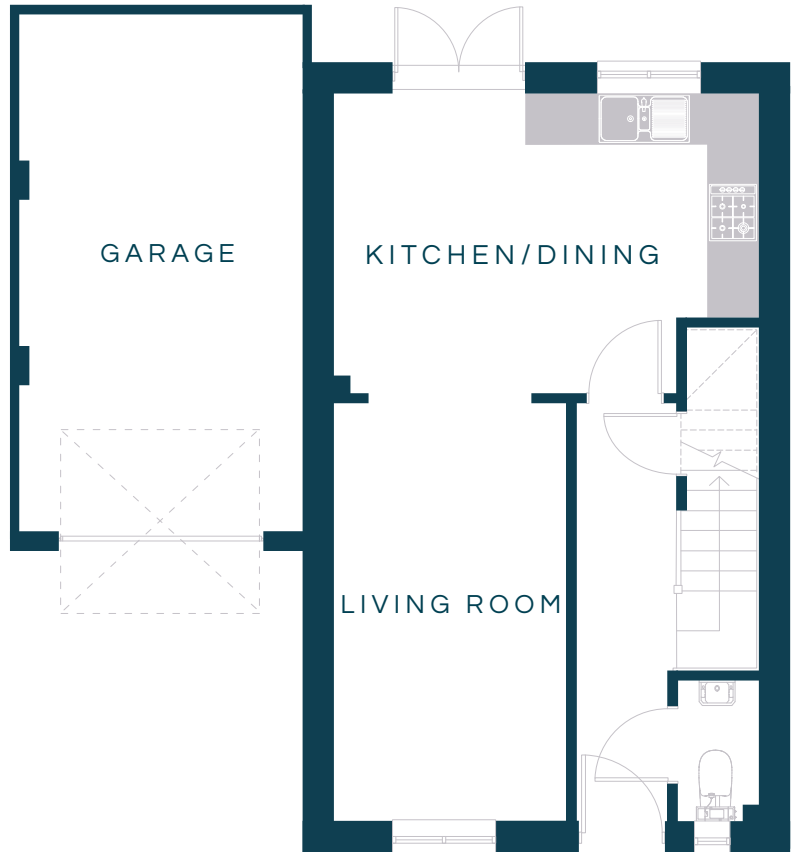


FIRST FLOOR

DIMENSIONS

Kitchen/Dining 4.9m x 3.4m / 16'0" x 11'1"  
 Living 2.6m x 4.8m / 8'6" x 15'8"  
 Garage 3.2m x 5.9m / 10'5" x 19'4"

Bedroom 1 3.7m x 3.9m / 12'1" x 12'9"  
 Bedroom 2 2.7m x 3.2m / 8'10" x 10'5"  
 Bedroom 3 2.0m x 2.5m / 6'6" x 8'2"  
 Family Bathroom 1.8m x 2.0m / 5'10" x 6'6"



GROUND FLOOR

