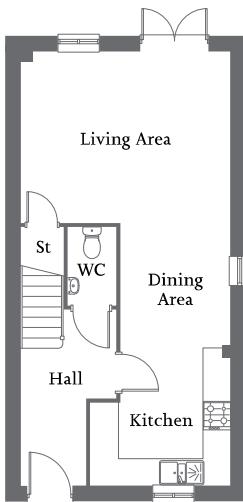


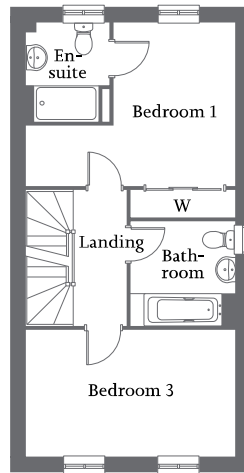


| Open-plan kitchen/dining/living area with French Doors to garden | Bedroom 1 with en-suite and fitted wardrobe to first floor |  
| Three further bedrooms and two bathrooms | Allocated parking spaces |



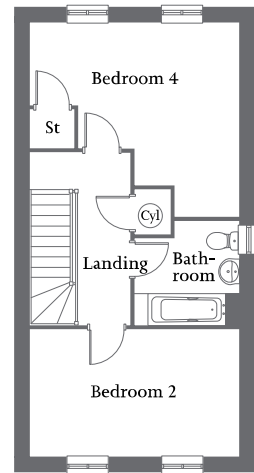
**Ground Floor**

Kitchen/Dining/  
Living Area 9.47m x 4.57m 31'1" x 15'0"



**First Floor**

Bedroom 1 (Incl. wardrobe)	4.57m x 4.25m	15'0" x 13'11"
En-suite	2.16m x 1.81m	7'1" x 5'11"
Bedroom 3	4.57m x 2.77m	15'0" x 9'1"
Bathroom	2.29m x 2.25m	7'6" x 7'5"



**Second Floor**

Bedroom 2	4.57m x 2.77m	15'0" x 9'1"
Bedroom 4	4.57m x 4.24m	15'0" x 13'11"
Bathroom	2.28m x 2.26m	7'6" x 7'5"