



**Goldfinch Court, 15 Brocklehurst Way, Horley, RH6 8GN**

Guide Price **£230,000 – £240,000**



**MANSELL  
McTAGGART**  
— Trusted since 1947 —



## Goldfinch Court, 15 Brocklehurst Way, Horley, RH6 8GN

Presenting a spacious one bedroom top floor apartment, this property offers an exceptional opportunity for first time buyers or downsizers seeking comfort and convenience. Upon entering, you will be greeted by a bright open plan living space, seamlessly incorporating a beautiful kitchen boasting contemporary design and functionality.

The property further boasts a well-appointed bedroom, ensuring a restful atmosphere for a good night's sleep. The modern fitted bathroom adds a touch of sophistication and completes the living arrangement.

Situated within the highly sought-after Westvale Park development, residents will enjoy a secure entry phone system and communal bike storage, offering peace of mind and ease of transportation. Added convenience comes in the form of an allocated parking space, ensuring hassle-free access to your vehicle.

This property's appeal is further enhanced by its UPVC Sash windows throughout, providing a stylish and energy-efficient solution. Drawing upon a neutral colour scheme, the interior is tastefully decorated, presenting a blank canvas awaiting the personal touch of its new owner.



## Goldfinch Court, 15 Brocklehurst Way, Horley, RH6 8GN

In summary, this top floor apartment represents a wonderful prospect for those seeking a modern and comfortable residence within a desirable location. With a prime position and an array of amenities nearby, this property is sure to be well-received by astute buyers searching for a contemporary urban retreat. NO ONWARD CHAIN

Council Tax band: C//Tenure: Leasehold

Lease details:

120 years remaining

Ground Rent: £150 per annum

Service Charge: £210.91 per month

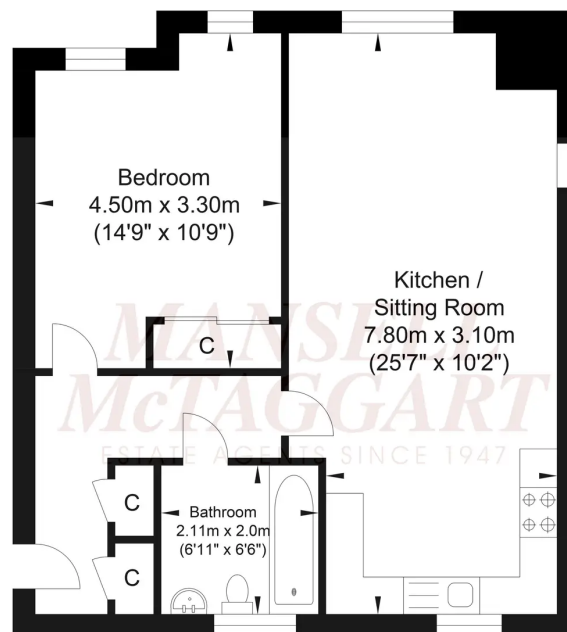
Ground rent review every 10 years

Lease details have been provided by the vendor and are to be checked by your solicitor.

- Spacious one bedroom top floor apartment
- Open plan living with beautiful kitchen
- Ideal for first time buyers or downsizers
- Contemporary fitted bathroom
- Fitted kitchen with integrated appliances
- Located within the popular Westvale Park development
- Secure entry phone system & communal bike storage
- Allocated parking space
- UPVC Sash windows throughout
- NO ONWARD CHAIN



## Brocklehurst Way, Goldfinch Court



Ground Floor  
Approximate Floor Area  
577.37 sq ft  
(53.64 sq m)

Approximate Gross Internal Area = 53.64 sq m / 577.37 sq ft  
Illustration for identification purposes only, measurements are approximate, not to scale.

## Mansell McTaggart Horley

Mansell Mc Taggart, 3 Central Parade Massetts Road - RH6 7PP

01293 228228

horley@mansellmctaggart.co.uk

[www.mansellmctaggart.co.uk/branch/horley](http://www.mansellmctaggart.co.uk/branch/horley)

Consumer Protection from Unfair Trading Regulations 2008 We have not tested any apparatus, equipment, fixtures, fittings or services and so cannot verify that they are in working order or fit for purpose. You are advised to obtain verification from your solicitor or surveyor. References to the tenure of a property are based on information supplied by the seller. We have not had sight of the title documents and a buyer is advised to obtain verification from their solicitor. Items shown in photographs are not included unless specifically mentioned within the sales particulars, but may be available by separate negotiation.