



L&H residential
FOR SALE
enquiries@laminghope.com
020 3617 1333

Croxdale Road, Borehamwood

Guide Price **£449,950**

L&H residential
laminghope.com **sales & lettings**



Croxdale Road

Borehamwood

Exceptional 3-bed mid-terraced house in sought-after Elstree & Borehamwood. Impeccably presented with spacious rooms, modern kitchen, off-street parking, private garden and potential for extension. Close to transport, shops, parks, and a Synagogue. Ideal family home. Must-see.

Tenure: Freehold

- Terraced house with side and rear access
- Three larger than average bedrooms
- Modern eat in kitchen
- Downstairs guest WC
- Off street parking (back of garden)
- Westerly facing private garden
- 0.7 miles from Elstree and Borehamwood Train Station
- Short walk to local shops, park and Synagogue



L&Hresidential
sales & lettings

L&Hresidential
laminghope.com sales & lettings

Borehamwood - 0203 617 1333

Scott Magor

e scott@laminghope.com

t +44 7572 958 043



L&Hre

Croxdale Road, WD6



Approximate Gross Internal Area = 96.1 sq m / 1034 sq ft

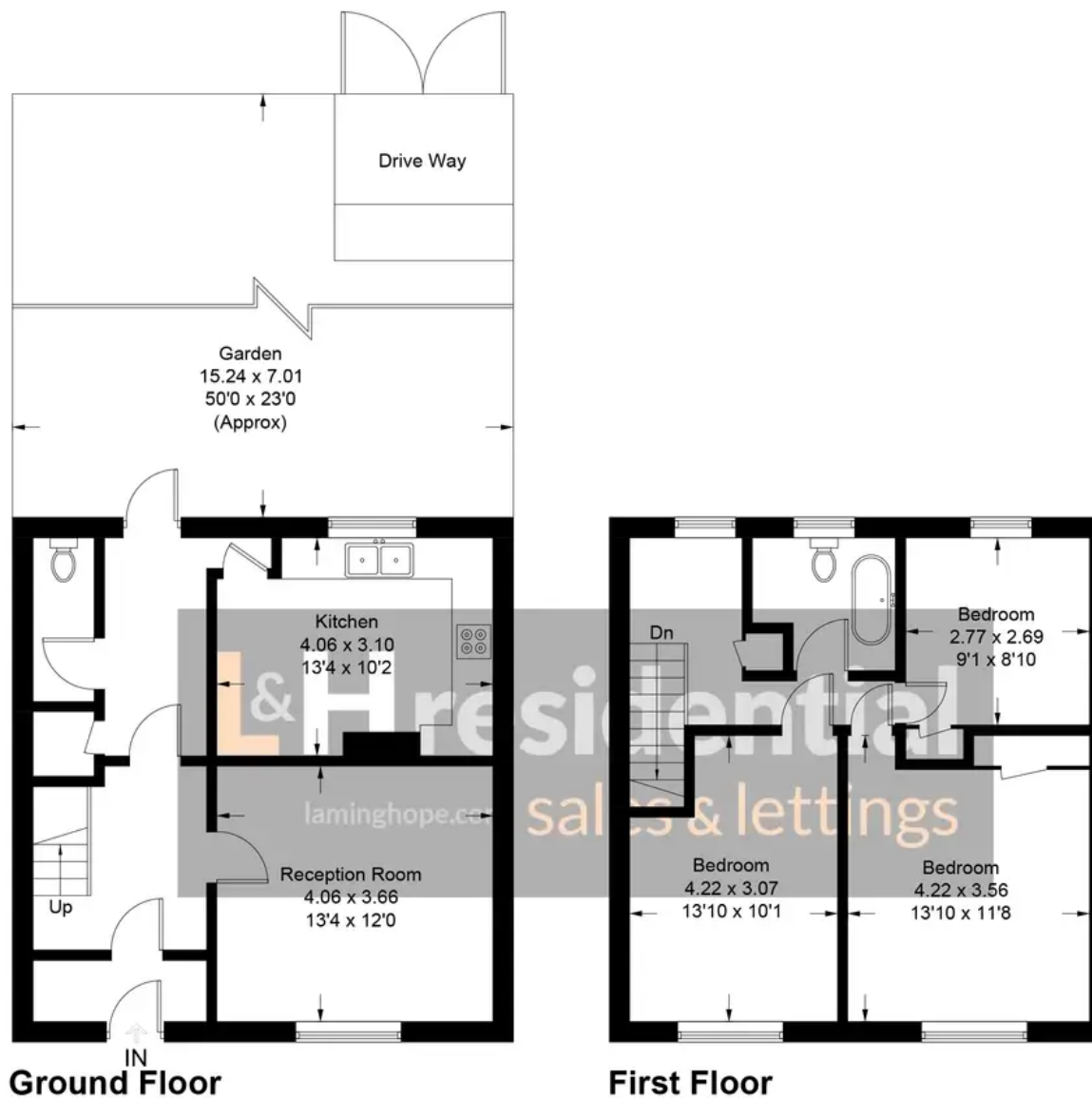


Illustration for identification purposes only, measurements are approximate, not to scale. floorplansUsketch.com © (ID628762)

