



Elliot Heath
ESTATE AGENTS

24 Dixons Court Crane Mead, Ware

Guide Price **£260,000**

24 Dixons Court Crane Mead

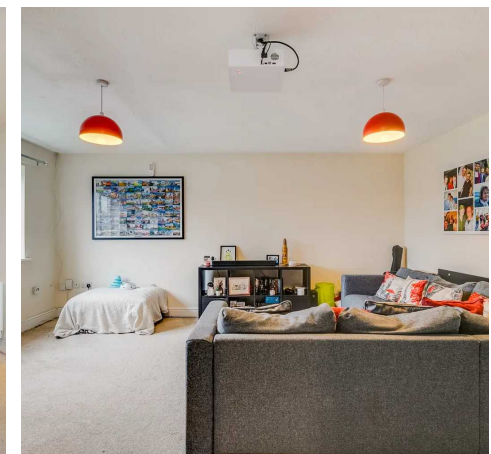
Ware, Ware

Spacious 2-bed top floor apartment in riverside development near Ware High Street & train station. Open plan living/dining, fitted kitchen, double glazing, allocated parking, communal gardens, loft storage, low service charges. Call 01920 293333 to arrange viewing. Approx. 40 mins to London. Council Tax band: C

Tenure: Leasehold

EPC Energy Efficiency Rating: E

EPC Environmental Impact Rating: E



Dixons Court, SG12

Approximate Area = 63.54 sq m / 684 sq ft



Key :
CH - Ceiling Height



Third Floor

Illustration For Identification Purposes Only.
All measurements and areas are approximate, not to scale.

© Orange Tree Photography



COMMUNAL GARDEN

Located on this popular development the property is situated in delightful well maintained riverside communal gardens. Communal refuse area.

PERMIT

2 Parking Spaces

Permit parking the vendor currently holds two permits.







Elliot Heath Estate Agents

Elliot Heath Estate Agents, 7 Star Street - SG12 7AA

01920 29 33 33

hello@elliotheath.co.uk

elliotheath.co.uk