



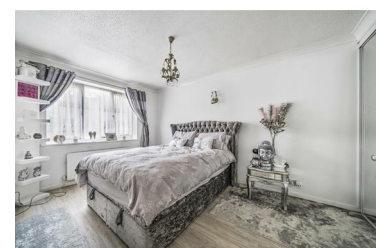
163a Widmore Road, Bromley, BR1 3AX
Asking price £340,000



Presented by I Am Real Estate, this splendid ground-floor apartment at the highly desired Eastland Court offers the perfect opportunity for first-time homebuyers.

The gem in this property crown its prime location. It nestles within a comfortable distance of Bromley's bustling High Street, where a comprehensive range of amenities awaits. For commuters and city-goers, the proximity of Bromley North and Bromley South stations provides direct and quick access to the heart of Central London.

The property unveils a generously sized reception room that basks in the soft glow of natural light. This flexible space comfortably accommodates a relaxing seating area and a dining zone, ideal for everyday living or entertaining guests. The double patio doors open onto an inviting terrace that



- 2 Double Bedrooms
- Long Lease 994 Years
- Parking
- Storage
- 641 Square Foot
- EPC C
- Ground Floor
- Direct Garden access
- Gas Central Heating
- Private Patio Terrace