

*tavistockbow*

**For Sale**



## People Make Places



**Little Adelphi, John Adam Street, Covent Garden**

2 bedrooms | 657 sq ft

£1,295,000





A spacious two bedroom, two bathroom (one ensuite) apartment in this exceptionally popular 24 hour portered block. The flat has fantastic roof top views to the east and south, including the top of the London Eye. There is a large bright reception room and separate galley kitchen.

#### What you need to know

- Two double bedrooms
- Two bathrooms (one en-suite shower room)
- Large reception room
- Secure underground parking
- Fantastic roof top views
- 6th floor
- Annual service charge of £8,062
- Share of freehold
- Twenty four hour concierge
- Close to Charing Cross & Embankment tube / mainline stations



**Little Adelphi, John Adam Street, Covent Garden**



### Overview

Located towards the top of the building, this bright two bedroom, two bathroom apartment faces south and has a fantastic view of the London Eye. There are two bathrooms (one ensuite) and a well equipped separate kitchen. The apartment is served by two passenger lifts and a 24 hour concierge, with a secure parking space under the building.

John Adam Street is a beautiful street famed for its Georgian architecture. The green & tranquil public space of Victoria Embankment Gardens is only moments away, with Covent Garden's bustling Piazza just a short stroll north of the Strand, offering a huge array of dining, entertainment & retail attractions. Excellent transport links are offered by nearby Charing Cross & Embankment stations, with regular river bus services to the City & Canary Wharf from nearby Embankment Pier.





**Little Adelphi, John Adam Street, Covent Garden**

# People Make Places

London is collection of inspiring urban villages and one of the most exciting places in the world to live, work & play.

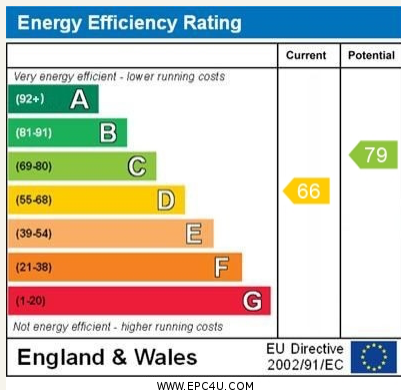
We work with both property owners and their occupiers, sharing the story of these vibrant neighbourhoods, conveying the unique soul & energy to future custodians, the people who'll keep them buzzing.

And unlike many real estate businesses we're not just about buildings, because streets & buildings don't make a neighbourhood.

We're about building relationships, because **people make places**.

MISINTERPRETATION ACT (COPYRIGHT) DISCLAIMER: Tavistock Bow Ltd for themselves and for the vendor(s) of this property whose agents they are, given notice that: 1. These particulars do not constitute, not constitute any part of, an offer or contract. 2. None of the statements contained in these particulars as to the property are to be relied on as statements or representations of fact. 3. Any intending purchaser or lessee must satisfy themselves by inspection or otherwise as to the correctness of each of the statements contained in these particulars. 4. The vendor(s) or lessor(s) do not make or give and neither Tavistock Bow Ltd nor any person in their employment has any authority to make or give any representation or warranty whatever in relation to this property. Finance Act 1989, Unless otherwise stated all prices and rents are quote exclusive of VAT. Property Misrepresentation Act 1991; These details are believed to be correct at the time of compilation but may be subject to subsequent amendment.

Follow us:     @tavistockbow

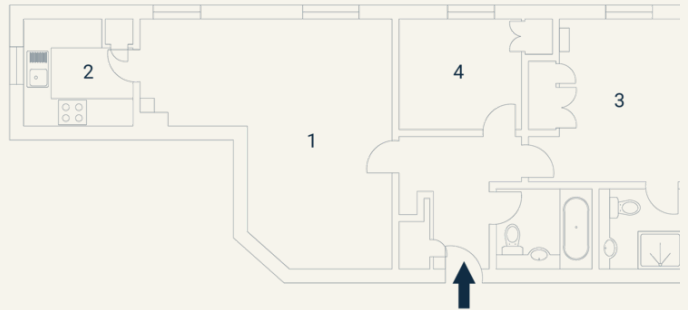


## Little Adelphi, WC2

Approximate Gross Internal Area 61 sq m / 657 sq ft

### Sixth Floor

1 Living / Dining	2 Kitchen	3 Bedroom	4 Bedroom
5.40 x 5.35M 17'9" x 17'7"	2.35 x 2.29M 7'9" x 7'6"	3.50 x 3.29M 11'6" x 10'10"	2.67 x 2.40M 8'9" x 7'10"



Floorplan produced for Tavistock Bow. Illustration for identification purposes only and not to scale. All measurements are approximate and not to be relied upon.

**tavistockbow**

21 New Row, Covent Garden,  
London, WC2N 4LE

t: 020 7477 2177  
e: [hello@tavistockbow.com](mailto:hello@tavistockbow.com)  
w: [tavistockbow.com](http://tavistockbow.com)



**Little Adelphi, John Adam Street, Covent Garden**