



Clare Drive, Highfields Caldecote

+44 (0) 1223 508050

lettings@cookecurtis.co.uk

www.cookecurtis.co.uk

A spacious three bedroom, semi-detached home located in the popular village of Highfields Caldecote. The property is located within the Comberton Village College catchment area and provides easy access to the A428 and A14, and Cambridge City Centre.

£1,300 pcm

Clare Drive, Cambridge,
CB23 7UY



Conveniently positioned in the ever-popular village of Highfields Caldecote, this semi-detached home is well suited to a professional couple or family.

Stepping into the entrance hall, there is a useful W.C to the left, and the spacious lounge with feature fireplace to the right. Doors lead from the lounge into the conservatory, which can also be accessed from the kitchen. The conservatory offers pleasant views over the enclosed rear garden. The kitchen features plenty of worktop and cupboard space and appliances such as large fridge, oven and hob plus space for a washing machine.



Upstairs, the master bedroom has two built in wardrobes and en-suite shower room. There are also two further bedrooms and the family bathroom.

Externally, the property has a large rear garden and carport parking. The property also has gas central heating, on street parking and is available now for long term rental.

Pets considered. Video tour available.

Highfields Caldecote is an appealing established community located about 5 miles west of Cambridge city centre and 11 miles east of St Neots. The A428 gives easy access to Cambridge and in the other direction to St Neots. Junction 13 of the M11 is about 4.5 miles east and the A14 is about 5 miles.





94 sqm / 1014 sqft

3 bed, 2.5 bath, 2 recep

Council tax band - C

EPC - C / 70

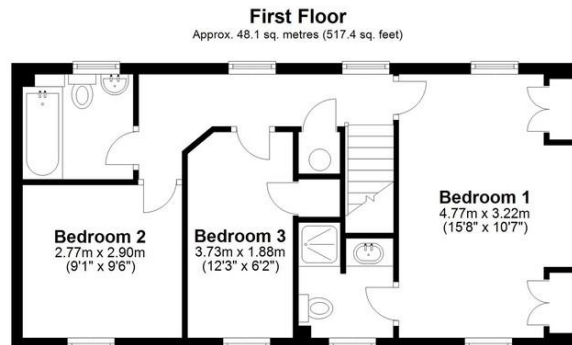
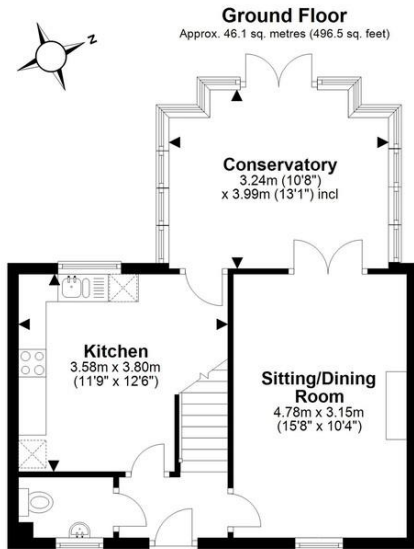
Gas central heating

Carport parking

Conservatory

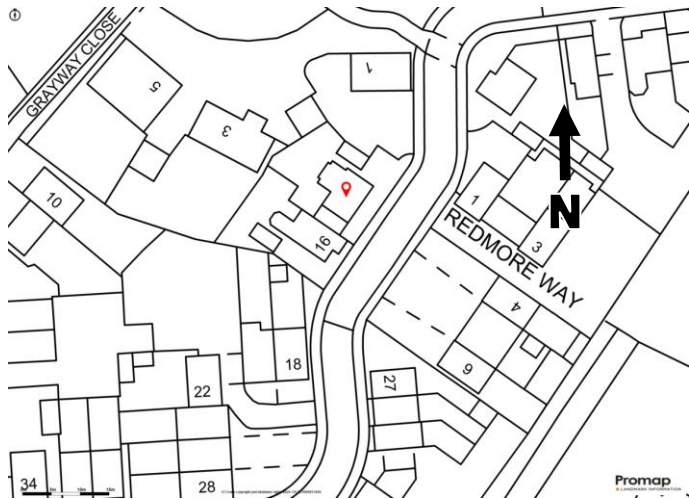
Available February 2024





Total area: approx. 94.2 sq. metres (1013.9 sq. feet)

Drawings are for guidance only. www.beachenergy.co.uk - IPMS 2
Plan produced using PlanUp.



Highfields Caldecote is an appealing established community located about 5 miles west of Cambridge city centre and 11 miles east of St Neots. The A428 gives easy access to Cambridge and in the other direction to St Neots. Junction 13 of the M11 is about 4.5 miles east and the A14 is about 5 miles. Caldecote is well served by a sought after primary school rated good by Ofsted and is within the secondary school catchment for Comberton Village College which is rated outstanding. The village also has a large playing field and pavilion used for football and cricket along with tennis and basketball courts which are free for public use. There is also a café, village hall, social club, hairdresser, beauty salon and a petrol station with a Co-Op and deli/ coffee shop. The village is surrounded by open countryside with lots of bridleways and footpaths providing pleasant walks and rides and there is a lovely bluebell wood off Highfields Road and nearby in Bourn there is the Cambridge Country Club, a luxurious new complex offering a wellness centre, gym, luxury spa, swimming pool and a bar and restaurants with views over the well established golf course

COOKE
CURTIS
& CO