



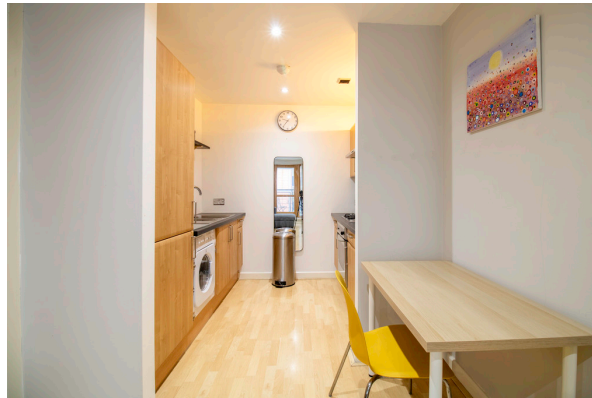
£875 PCM

- SPACIOUS ONE BEDROOM
- FURNISHED
- GAS CENTRAL HEATING
- MINIMUM CONTRACT: 12

- AVAILABLE NOW
- PARKING CAN BE INCLUDED FOR EXTRA COST
- 4TH FLOOR
- BALCONY WITH RIVER VIEWS

6 Bowman Lane, Leeds, LS10 1HF

**** ONE BEDROOM ** 4TH FLOOR ** PARKING CAN BE INCLUDED FOR EXTRA COST ** FURNISHED ** RIVER VIEWS ** AVAILABLE NOW ****



Zenko Properties would like to present this well kept and modern one bedroom apartment on the fourth floor at Brewery Wharf with a beautiful balcony overlooking the river.

The apartment is furnished with great views over the River Aire and the Brewery Wharf courtyard.

The property offers an entrance hall with, main bedroom with a large bed. Fully tiled house bathroom with shower over bath.

Living area is furnished with sofa, dining table with chairs, floor TV stand and lamp, modern laminate flooring and floor to ceiling windows which access to the great balcony which offers two chairs and a and outside table.

Good size open plan kitchen with black granite work tops features a full Fridge/Freezer and washing machine with dryer function.

Property comes with Gas Central Heating and 4 ring gas hob.

The balcony offers ample outdoor furniture and zero maintenance.

Parking can be included for extra cost.

EPC - B

Council Tax Band - C

AVAILABLE NOW

2 The Chandlers, Leeds, West
Yorkshire, LS2 7EZ

www.zenkoproperties.co.uk
0113 247 0777
sales@zenkoproperties.co.uk

Agents Note: Whilst every care has been taken to prepare these sales particulars, they are for guidance purposes only. All measurements are approximate are for general guidance purposes only and whilst every care has been taken to ensure their accuracy, they should not be relied upon and potential buyers are advised to recheck the measurements