



## 74 Beach Road Chalet Park, Beach Road

£35,000 Leasehold

A contemporary, two bedroom park home located just a short 5-minute walk from the beach. Currently running as a successful Airbnb, which generated a gross income of £7392.36 for 2022-2023. Finished to a high standard throughout, this park home offers communal parking, an open plan living area, two comfortable bedrooms and a shower room. A fantastic family holiday home or investment.

Tenure: Leasehold

A contemporary, two bedroom park home located just a short 5-minute walk from the beach. Currently running as a successful Airbnb, which generated a gross income of £7392.36 for 2022-2023. Finished to a high standard throughout, this park home offers communal parking, an open plan living area, two comfortable bedrooms and a shower room. A fantastic family holiday home or investment.

### LOCATION

The coastal village of Scratby is located only a mile away from the stunning coastline where you can enjoy all of the local amenities Scratby has to offer including the Post Office, Holiday Camps, Tea rooms and the 'Moments' restaurant. Apart from the lovely sandy coast, Scratby is surrounded by countryside field views and the neighbouring villages of Winterton, Hemsby, Ormesby, Martham and only a short 8 miles from Great Yarmouth and 20 miles into the Norwich city centre, where you can enjoy a wide range of amenities, shopping facilities, leisure centres and the beauty of the rich cultural history.

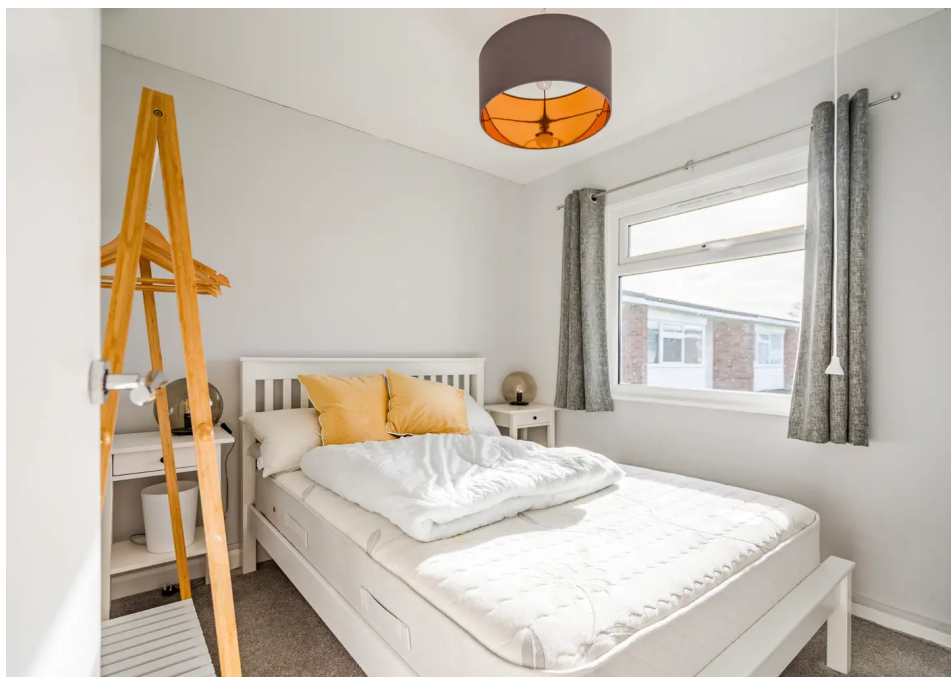
### BEACH ROAD



A contemporary, two bedroom park home located just a short 5-minute walk from the beach. Currently running as a successful Airbnb, which generated a gross income of £7392.36 for 2022-2023. Finished to a high standard throughout, this park home offers communal parking, an open plan living area, two comfortable bedrooms and a shower room. A fantastic family holiday home or investment.

### LOCATION

The coastal village of Scratby is located only a mile away from the stunning coastline where you can enjoy all of the local amenities Scratby



A contemporary, two bedroom park home located just a short 5-minute walk from the beach. Currently running as a successful Airbnb, which generated a gross income of £7392.36 for 2022-2023. Finished to a high standard throughout, this park home offers communal parking, an open plan living area, two comfortable bedrooms and a shower room. A fantastic family holiday home or investment.

## LOCATION

The coastal village of Scratby is located only a mile away from the stunning coastline where you can enjoy all of the local amenities Scratby has to offer including the Post Office, Holiday Camps, Tea rooms and the 'Moments' restaurant. Apart from the lovely sandy coast, Scratby is surrounded by countryside field views and the neighbouring villages of Winterton, Hemsby, Ormesby, Martham and only a short 8 miles from Great Yarmouth and 20 miles into the Norwich city centre, where you can enjoy a wide range of amenities, shopping facilities, leisure centres and the beauty of the rich cultural history.

## BEACH ROAD

This beautifully presented 2-bedroom park home is situated in a highly sought-after park, offering the perfect opportunity for those seeking a contemporary and low maintenance property.

The well-appointed interior features a stunning open plan lounge and diner, creating a seamless flow between the living spaces. The modern and stylish decor provides a welcoming and comfortable atmosphere for both residents and guests alike.

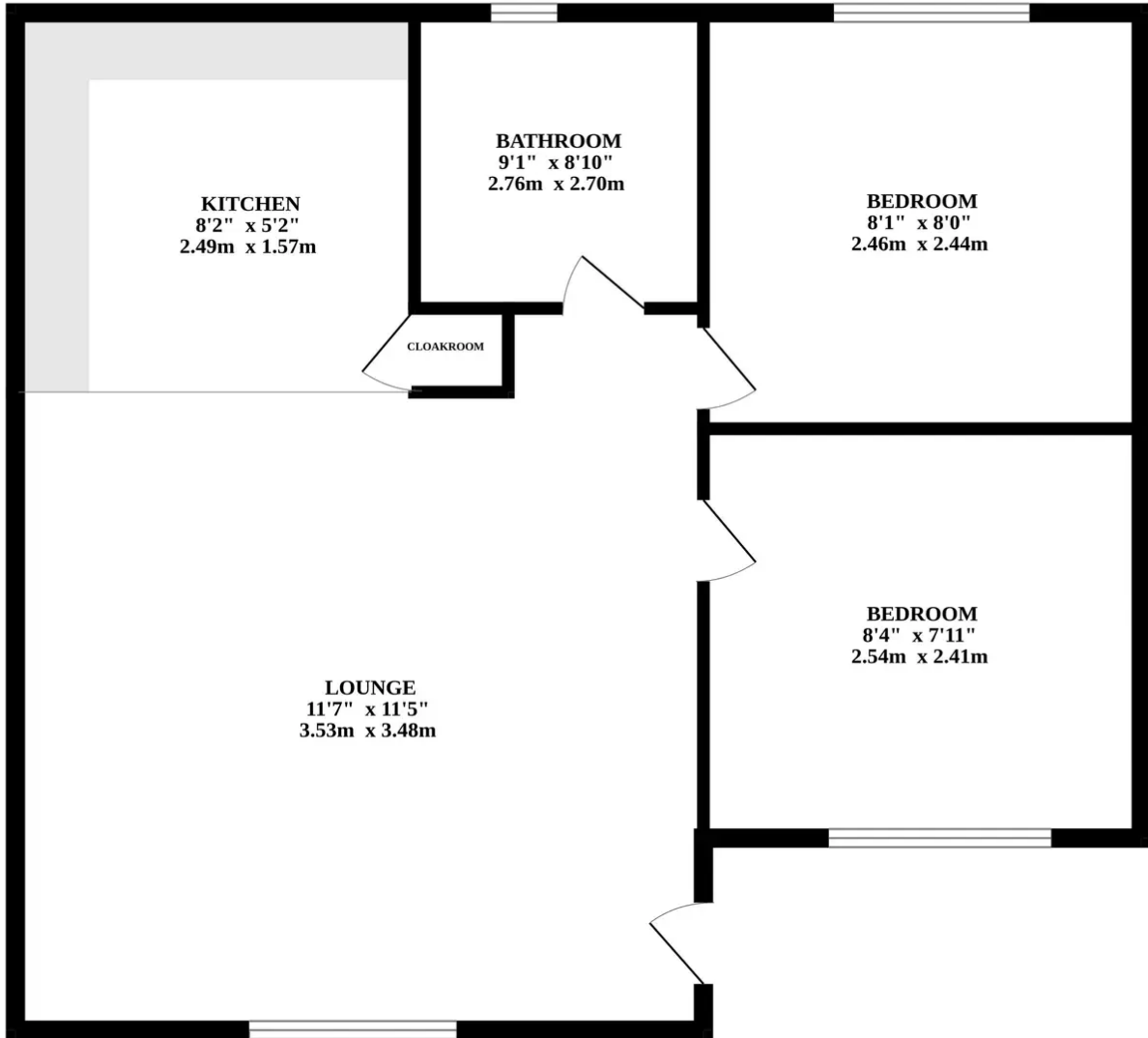
The sleek and contemporary kitchen is equipped with high-quality appliances, providing the perfect space for cooking and entertaining.

The property boasts two bedrooms, both of which are generously sized and well-appointed. The master bedroom offers a tranquil space to retreat to, with plenty of natural light and ample storage. The shower room is located to the rear aspect and offers a neutral suite.

Outside, the property benefits from access to the outdoor communal pool, perfect during the summer months!

Situated just a short walk from the beach, this property offers the opportunity to enjoy coastal living at its finest. Whether you





Whilst every attempt has been made to ensure the accuracy of the floorplan contained here, measurements of doors, windows, rooms and any other items are approximate and no responsibility is taken for any error, omission or mis-statement. This plan is for illustrative purposes only and should be used as such by any prospective purchaser. The services, systems and appliances shown have not been tested and no guarantee as to their operability or efficiency can be given.  
Made with Metropix ©2024

You can include any text here. The text can be modified upon generating your brochure.

You can include any text here. The text can be modified upon generating your brochure.

