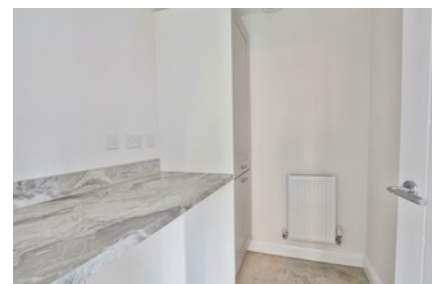




## Jobson Avenue, Beverley

### PRICED FROM £78,750



- ✓ Beal Homes Quality Build
- ✓ The Dalby House Type
- ✓ New Three-bedroom Semi-detached Gem
- ✓ Walkable Distance To Historic Beverley
- ✓ Acquire In Increments Of 25% Up To 100%
- ✓ Lounge, Fitted Kitchen, Ground Floor Wc
- ✓ Front Parking, Lovely Lawned Rear
- ✓ Epc Rating B

From **£78,750**

Bedroom 3 Bathroom 2 Reception 1