



Mulberry, 8 Hazelwood Court, Lindale Road  
£389,000







## Mulberry, 8 Hazelwood Court

Lindale Road, Grange-Over-Sands

Occupying an elevated position amidst four acres of private grounds Hazelwood Court, c.1897 is one of the areas most imposing buildings commanding outstanding panoramic views across Grange-over-Sands golf course towards Morecambe Bay. The Victorian property houses eleven luxury apartments which offer low maintenance permanent residences, second homes or holiday let investments.

Situated on the outskirts of the Lake District National Park within walking distance of Grange-over-Sands where the many amenities include restaurants, bars, shops, convenience stores, a post office, library, The Promenade and a railway station. Hazelwood Court offers access to great walks within the woods and surrounding countryside and it is within easy reach of the picturesque village of Cartmel, the market town of Kendal, The Lake District National Park and the M6.

The beautifully presented accommodation offers open plan kitchen, dining and living space, three double bedrooms, with two having en suite shower rooms, a four piece bathroom and ample storage. The apartment benefits from sliding sash windows and gas central heating and is offered for sale with no upper chain.

Outside offers communal gardens, allocated parking for two vehicles and visitor parking.

Council Tax band: D

Tenure: Leasehold



## ENTRANCE

6' 0" x 5' 10" (1.83m x 1.78m)

Painted entrance door, single glazed sliding sash window, radiator, built in cupboard, coving.

## ENTRANCE HALL

22' 9" x 12' 11" (6.94m x 3.94m)

Three single glazed sliding sash windows, two radiators, built in storage cupboard housing plumbing for washing machine, built in cupboard housing gas combination boiler, overhead storage, recessed spotlights, coving.

## KITCHEN, DINING AND LIVING SPACE

29' 0" x 22' 1" (8.84m x 6.74m)

Seven single glazed sliding sash windows, three radiators, excellent range of base and wall units, sink, built in oven and combination microwave, induction hob with glass splashback and extractor/filter over, integrated fridge, freezer, dishwasher and wine cooler, breakfast bar with feature pendant lighting, recessed spotlights, coving.

## BEDROOM

16' 2" x 12' 6" (4.92m x 3.81m)

Two single glazed sliding sash windows, two radiators, coving.

## EN SUITE

8' 4" x 3' 10" (2.55m x 1.17m)

. Heated towel radiator, three piece suite in white comprises W.C., wash hand basin to vanity and fully tiled shower cubicle with thermostatic shower fitment, recessed spotlights, extractor fan, fitted mirror, tiling to walls and floor.

## BEDROOM

15' 3" x 7' 8" (4.66m x 2.34m)

Two single glazed sliding sash windows, two radiators, coving.

## EN SUITE

8' 4" x 3' 10" (2.55m x 1.17m)

Heated towel radiator, three piece suite in white comprises W.C., wash hand basin to vanity and fully tiled shower cubicle with thermostatic shower fitment, recessed spotlights, extractor fan, fitted mirror, tiling to walls and floor.







### **BEDROOM**

15' 3" x 7' 8" (4.66m x 2.34m)

Two single glazed sliding sash windows, two radiators, coving.

### **EN SUITE**

8' 4" x 3' 10" (2.55m x 1.17m)

Heated towel radiator, three piece suite in white comprises W.C., wash hand basin to vanity and fully tiled shower cubicle with thermostatic shower fitment, recessed spotlights, extractor fan, fitted mirror, tiling to walls and floor.

### **BEDROOM**

13' 10" x 8' 6" (4.22m x 2.58m)

Two single glazed sliding sash windows, two radiators, coving.

### **BATHROOM**

8' 11" x 7' 0" (2.73m x 2.14m)

Single glazed sliding sash window, heated towel radiator, four piece suite in white comprises W.C., wash hand basin, bath and fully tiled shower cubicle with thermostatic shower fitment, recessed spotlights, extractor fan, fitted mirror, tiling to walls and floor.

### **SERVICES**

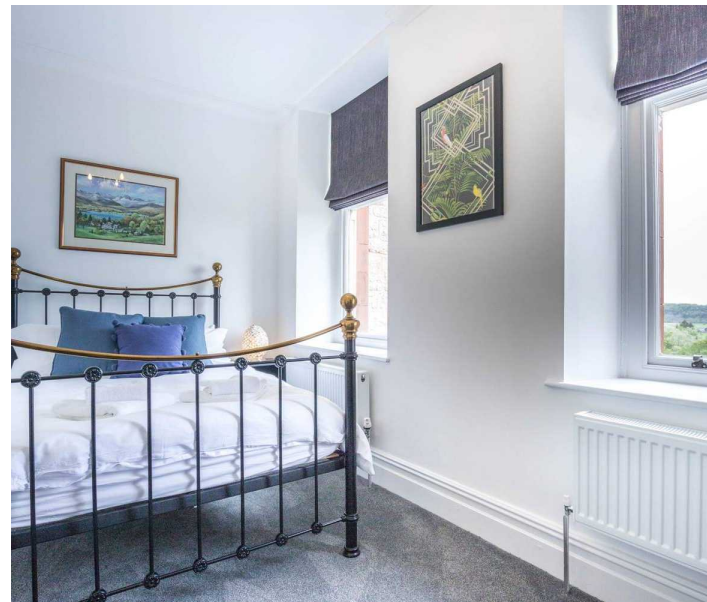
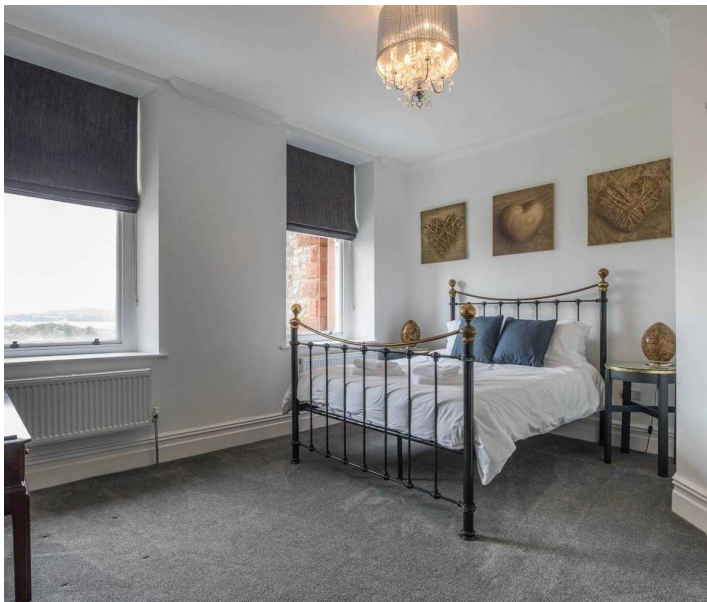
Mains electricity, mains gas, mains water, mains drainage.

### **EPC Rating D**

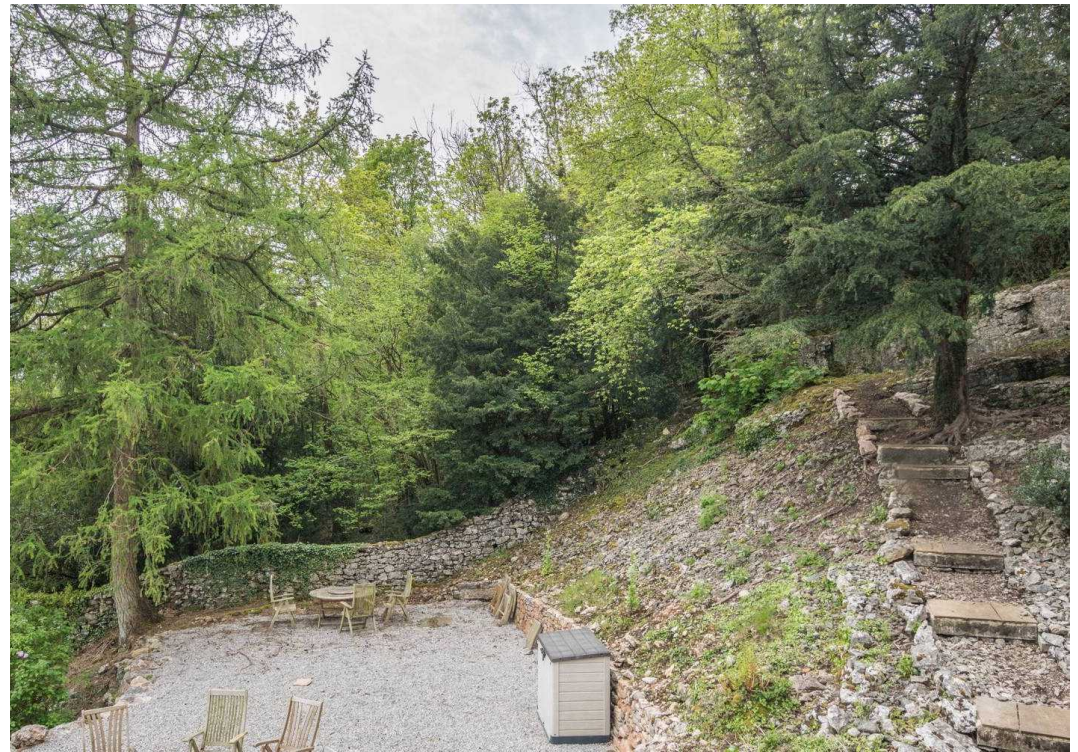
### **LEASEHOLD INFORMATION**

Lease Length - 999 years from 2019 Ground Rent - £100 per annum

Service Charge - £2,200 per annum









## GARDEN

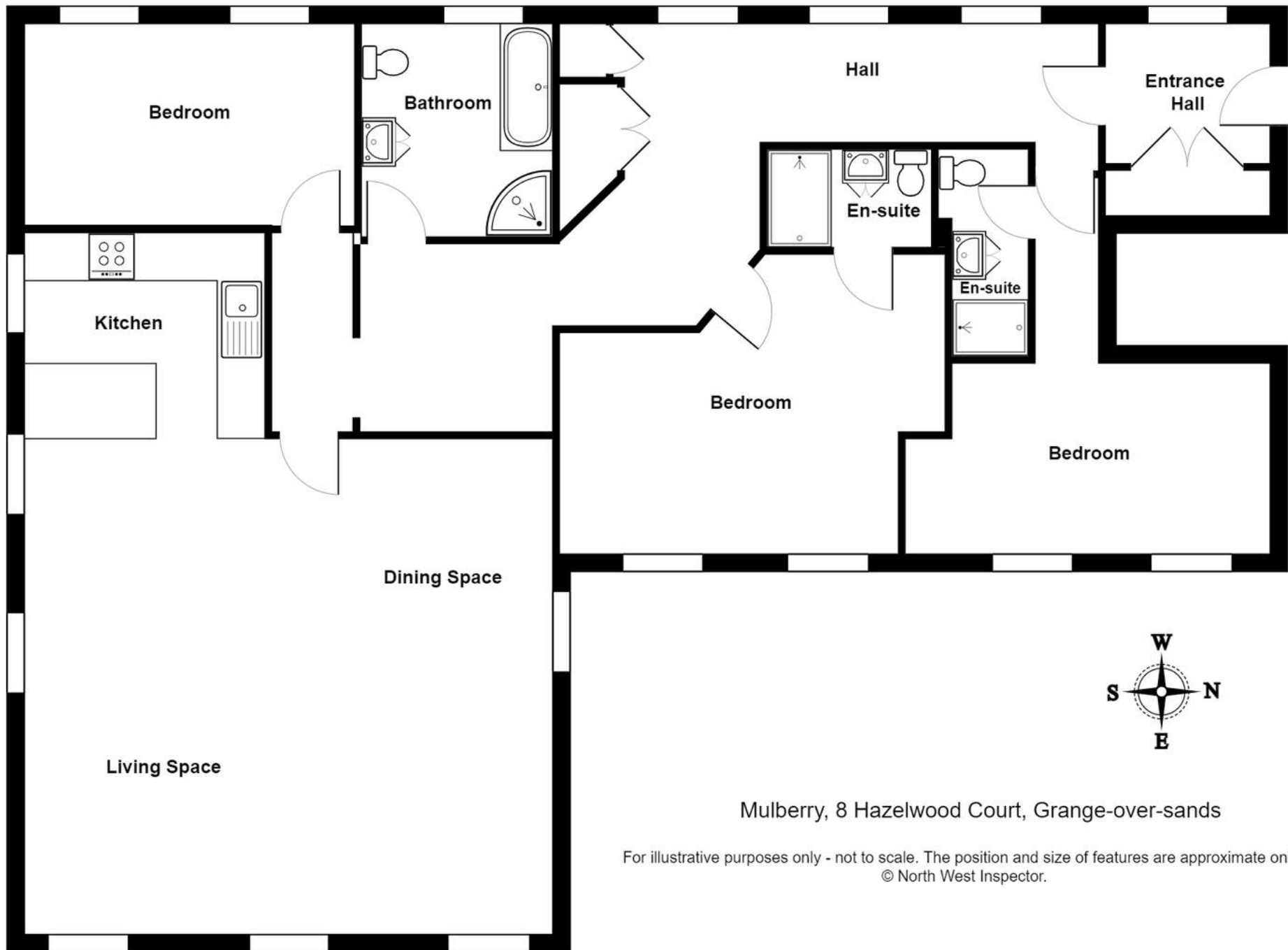
The development lies within extensive private grounds which includes four acres of communal, landscaped gardens and seating areas to soak up the views and mature woodland. There is allocated parking for two vehicles and ample visitors parking.

## ALLOCATED PARKING

2 Parking Spaces

There is allocated parking for two vehicles and ample visitors parking.





Mulberry, 8 Hazelwood Court, Grange-over-sands

For illustrative purposes only - not to scale. The position and size of features are approximate only.  
© North West Inspector.





## THW Estate Agents

Palace Buildings Main Street, Grange-Over-Sands - LA11 6AB

015395 33335 • [grange@thwestateagents.co.uk](mailto:grange@thwestateagents.co.uk) • [www.thwestateagents.co.uk](http://www.thwestateagents.co.uk)

Please note that descriptions, photographs and plans are for guidance only. Services and appliances have not been tested, measurements are approximate and alterations may not have necessary consents. Contact us for property availability and important details before travelling or viewing properties. THW Estate Agents Ltd is a separate legal entity to the solicitor firm of THW Legal Ltd which has different ownership and clients of THW Estate Agents Ltd do not have the same protection as those of THW Legal Ltd.