



Riversmead, Hoddesdon, Herts

  
**Reynolds Salter**  
Estate Agents









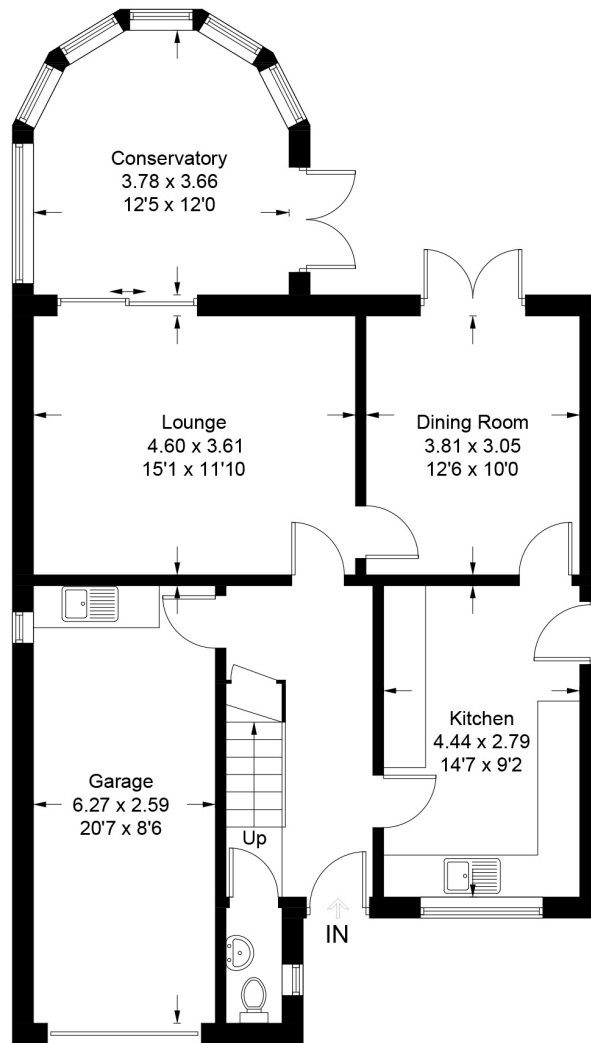
A Delightful FOUR bedroom TWO Bathroom detached house ideally situated in this highly regarded residential location adjacent to Hoddesdon Town Centre. This impressive home provides bright and spacious accommodation presented in good decorative order throughout with a generous sized Lounge, separate Dining Room leading into the Kitchen, Large Conservatory and Ground Floor Cloakroom/wc. The rear garden is a lovely addition to this family home with a large patio to the rear of the house stepping up to the lawn which is surrounded by mature flower beds with an abundance of plants, bushes and shrubs. The front exterior is partly laid to lawn with mature flower beds and a hard standing driveway leading to the Integral Garage. The house is conveniently located on the edge of Hoddesdon Town Centre which has an abundance of shops, cafe's, bars and restaurants. St Augustines Primary School is opposite and Robert Barclay Academy is approximately 0.5 of a mile. Broxbourne Railway Station (London Liverpool Street) is approximately 1 mile by car or approximately 15 minutes walk.

- **Sought After Location**
- **Close To Town Centre**
- **Four Bedroom**
- **Two Bathrooms**
- **Three Reception rooms**
- **Large Kitchen**
- **Beautiful Rear Garden**

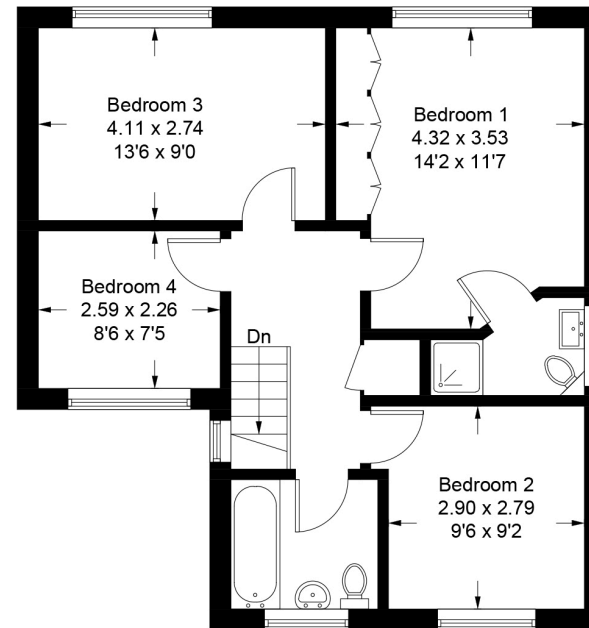


# Riversmead

Approximate Gross Internal Area = 141.5 sq m / 1523 sq ft  
(Including Garage)



**Ground Floor**



**First Floor**

Illustration for identification purposes only, measurements are approximate,  
not to scale. FloorplansUsketch.com © 2023 (ID1016991)

### Important notice

1. Particulars: These particulars are not an offer or contract, nor part of one. You should not rely on statements by Reynolds Salter in the particulars or by word of mouth or in writing ("information") as being factually accurate about the property, its condition or its value. Neither Reynolds Salter nor any joint agent has any authority to make any representations about the property, and accordingly any information given is entirely without responsibility on the part of the agents, seller(s) or lessor(s). 2. Photos etc: The photographs show only certain parts of the property as they appeared at the time they were taken. Areas, measurements and distances given are approximate only. Regulations etc: Any reference to alterations to, or use of, any part of the property does not mean that any necessary planning, building regulations or other consent has been obtained. A buyer or lessee must find out by inspection or in other ways that these matters have been properly dealt with and that all information is correct. 4. VAT: The VAT position relating to the property may change without notice.