



Middle Street, Nazeing, Essex


Reynolds Salter
Estate Agents





A Magnificent Five Double Bedroom Detached Family Home superbly appointed in a premier residential location in The Heart of Nazeing Village. This impressive house was tastefully built in 2013 over four floors to provide bright, spacious and versatile accommodation presented to an exceptionally high specification finish throughout. The rear of the house benefits from a beautifully private Low Maintenance Landscaped Garden, being part astro-turfed lawn, along with a spacious paved patio/bbq and purpose-built seating area with pizza oven. The rear of the garden provides a fabulous timber-built yurt, with built-in seating and cooking facilities, electricity and mood lighting. The front exterior is approached via a block-paved driveway which provides extensive parking for numerous vehicles and leads onto an integral garage. Nazeing is a popular village providing a number of shops, a highly regarded primary school, and a friendly local public house. Broxbourne Mainline Railway Station with its fast and frequent service into London Liverpool Street is approximately 2.5 miles.

- **Detached Family Home**
- **Premier Residential Location**
- **Five Double Bedrooms**
- **Four Bathrooms (Three En-Suite)**
- **Landscape Garden With 'Yurt'**
- **Chain Free**

EPC - C

The logo for Reynolds Salter Estate Agents, featuring a stylized yellow house icon above the company name in a serif font, with 'Estate Agents' in a smaller sans-serif font below.

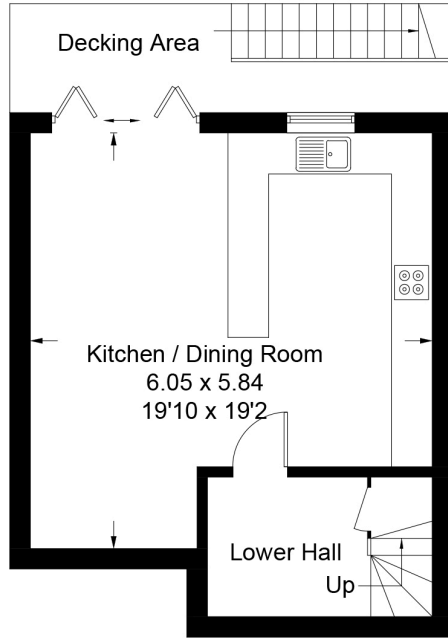
Reynolds Salter
Estate Agents

25a High Road, Broxbourne,
Herts, EN10 7HX
www.reynoldssalter.co.uk

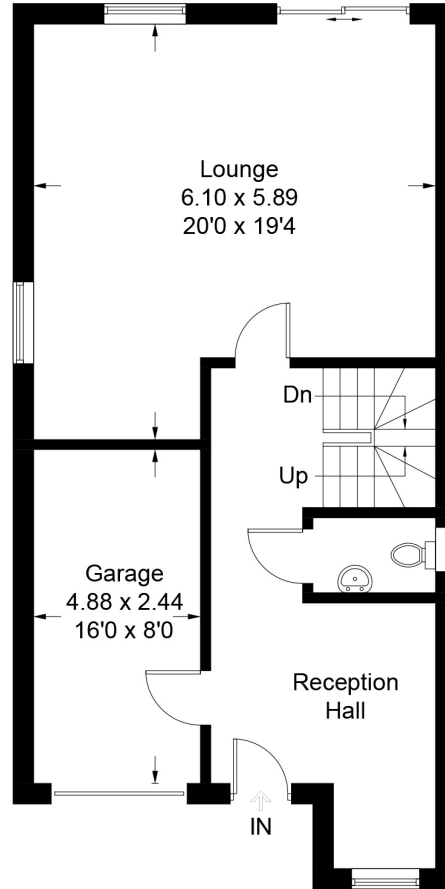
01992 449000

Ronda, Middle Street, Nazeing

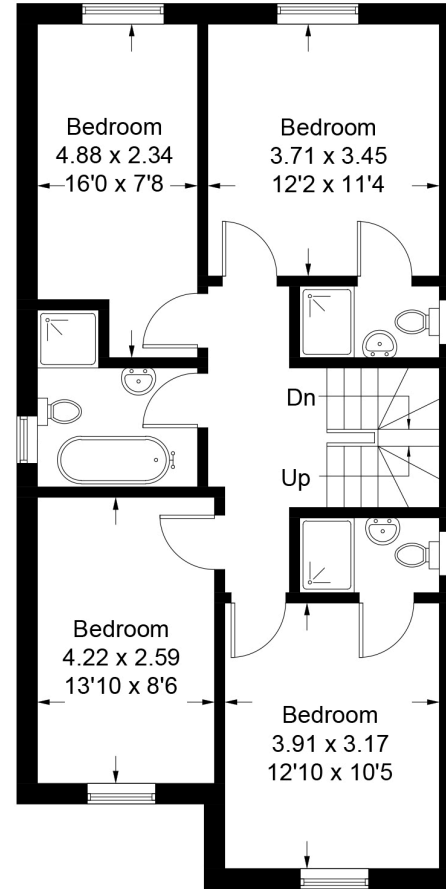
Approximate Gross Internal Area = 211.6 sq m / 2278 sq ft
(Including Garage)



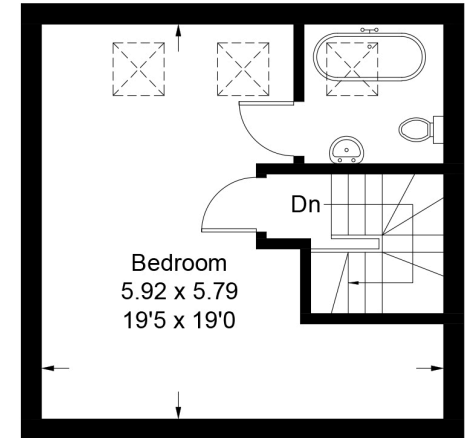
Lower Ground Floor



Ground Floor



First Floor



Second Floor

Illustration for identification purposes only, measurements are approximate, not to scale. FloorplansUsketch.com © 2017 (ID384152)

Important notice

1. Particulars: These particulars are not an offer or contract, nor part of one. You should not rely on statements by Reynolds Salter in the particulars or by word of mouth or in writing ("information") as being factually accurate about the property, its condition or its value. Neither Reynolds Salter nor any joint agent has any authority to make any representations about the property, and accordingly any information given is entirely without responsibility on the part of the agents, seller(s) or lessor(s). 2. Photos etc: The photographs show only certain parts of the property as they appeared at the time they were taken. Areas, measurements and distances given are approximate only. Regulations etc: Any reference to alterations to, or use of, any part of the property does not mean that any necessary planning, building regulations or other consent has been obtained. A buyer or lessee must find out by inspection or in other ways that these matters have been properly dealt with and that all information is correct. 4. VAT: The VAT position relating to the property may change without notice.