



Yukon Road, Turnford, Herts


Reynolds Salter
Estate Agents





A well presented spacious 2 bedroom 2 bathroom Top floor flat situated in this popular modern development close to local shops and amenities including the Brookfield Retail Park and Hertford Regional College. The property is accessed via an entryphone system and has allocated parking. Main road links into Central London (A10) are within 0.25 of a mile and both Broxbourne and Cheshunt Railway Stations (Liverpool St/Stansted) are within approximately 2 miles.

- **Spacious Top Floor Apartment**
- **Two Bedrooms**
- **Two Bathrooms**
- **Lounge Diner**
- **Allocated Parking**

EPC - C

Yukon Road

Approximate Gross Internal Area = 52.1 sq m / 561 sq ft

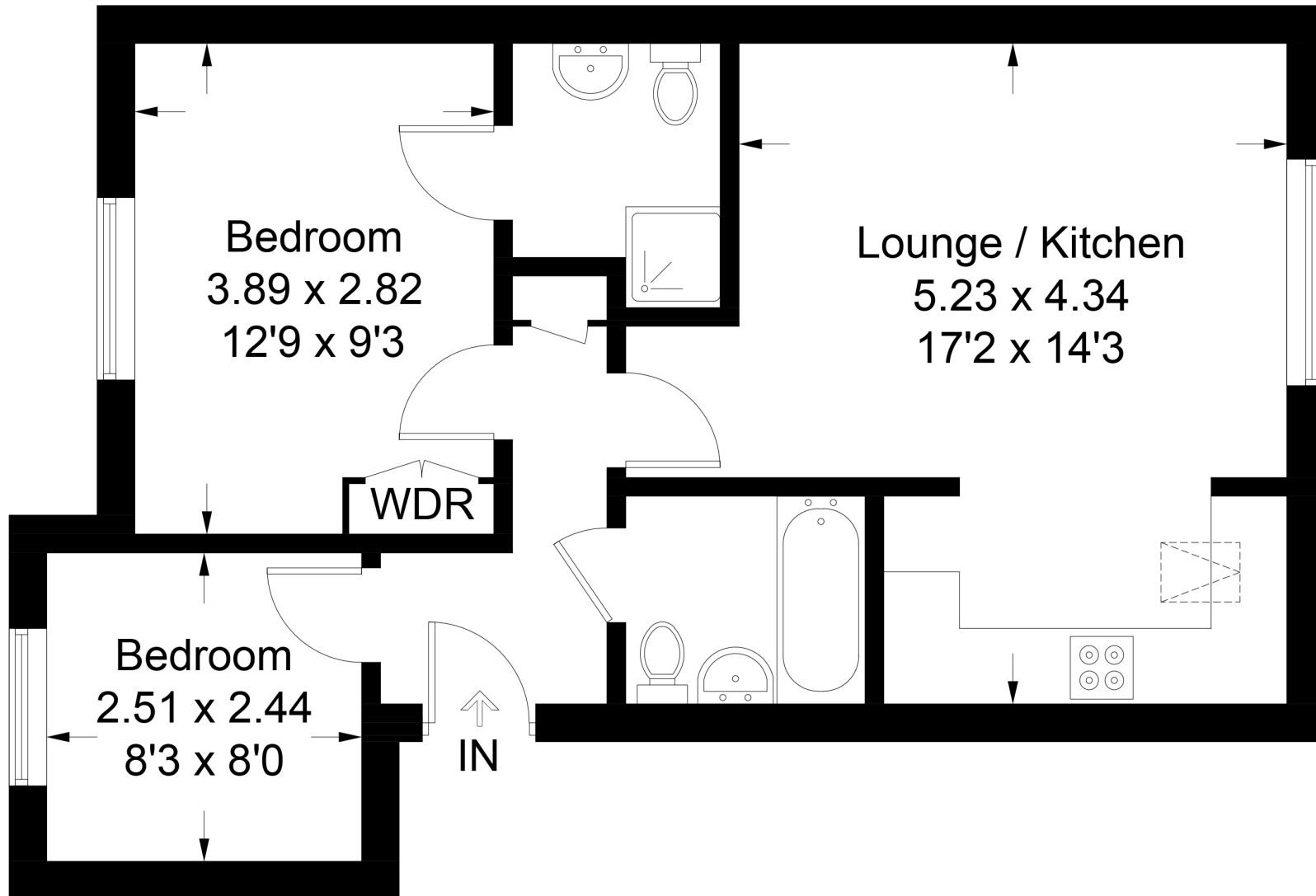


Illustration for identification purposes only, measurements are approximate, not to scale. FloorplansUsketch.com © 2019 (ID 530101)

Important notice

1. Particulars: These particulars are not an offer or contract, nor part of one. You should not rely on statements by Reynolds Salter in the particulars or by word of mouth or in writing ("information") as being factually accurate about the property, its condition or its value. Neither Reynolds Salter nor any joint agent has any authority to make any representations about the property, and accordingly any information given is entirely without responsibility on the part of the agents, seller(s) or lessor(s). 2. Photos etc: The photographs show only certain parts of the property as they appeared at the time they were taken. Areas, measurements and distances given are approximate only. Regulations etc: Any reference to alterations to, or use of, any part of the property does not mean that any necessary planning, building regulations or other consent has been obtained. A buyer or lessee must find out by inspection or in other ways that these matters have been properly dealt with and that all information is correct. 4. VAT: The VAT position relating to the property may change without notice.