



Church View, Broxbourne, Hertfordshire


Reynolds Salter
Estate Agents





A Magnificent and Rare Opportunity to acquire this Four Bedroom Detached House, enviably situated in a Highly Sought After Location in Central Broxbourne with fabulous views over Broxbourne Recreation Ground, St Augustine's Church and just a few minutes walk from Broxbourne Railway Station. This delightful family home was originally the show home when it was built in 1994, and sits on one of the largest plots in the road, providing well presented, spacious and versatile accommodation along with potential to improve or extend (subject to planning). The west facing rear garden is beautifully well established, being mainly laid to lawn with various trees, bushes and shrubs, along with a paved patio/bbq and seating area. Church View is conveniently located for all local amenities to include, Broxbourne Schools, Shops, Pubs and Restaurants, Wonderful Country and Riverside Walks, The Hertfordshire Golf & Country Club, and just a short walk across the park from Broxbourne Mainline Railway Station with its fast and frequent service into London Liverpool Street - CHAIN FREE

- **Detached Family Home**
- **Four Bedrooms**
- **Sought After Location**
- **Potential To Improve or Extend**
- **Close To Shops and Schools**
- **Short Walk to Station**

EPC - C

The logo for Reynolds Salter Estate Agents features a stylized yellow house silhouette above the company name in a bold, black serif font. Below the name, the words 'Estate Agents' are written in a smaller, black sans-serif font.

Reynolds Salter
Estate Agents

25a High Road, Broxbourne,
Herts, EN10 7HX
www.reynoldssalter.co.uk

01992 449000

Church View, Broxbourne, Hertfordshire

Approximate Gross Internal Area = 139.4 sq m / 1500 sq ft

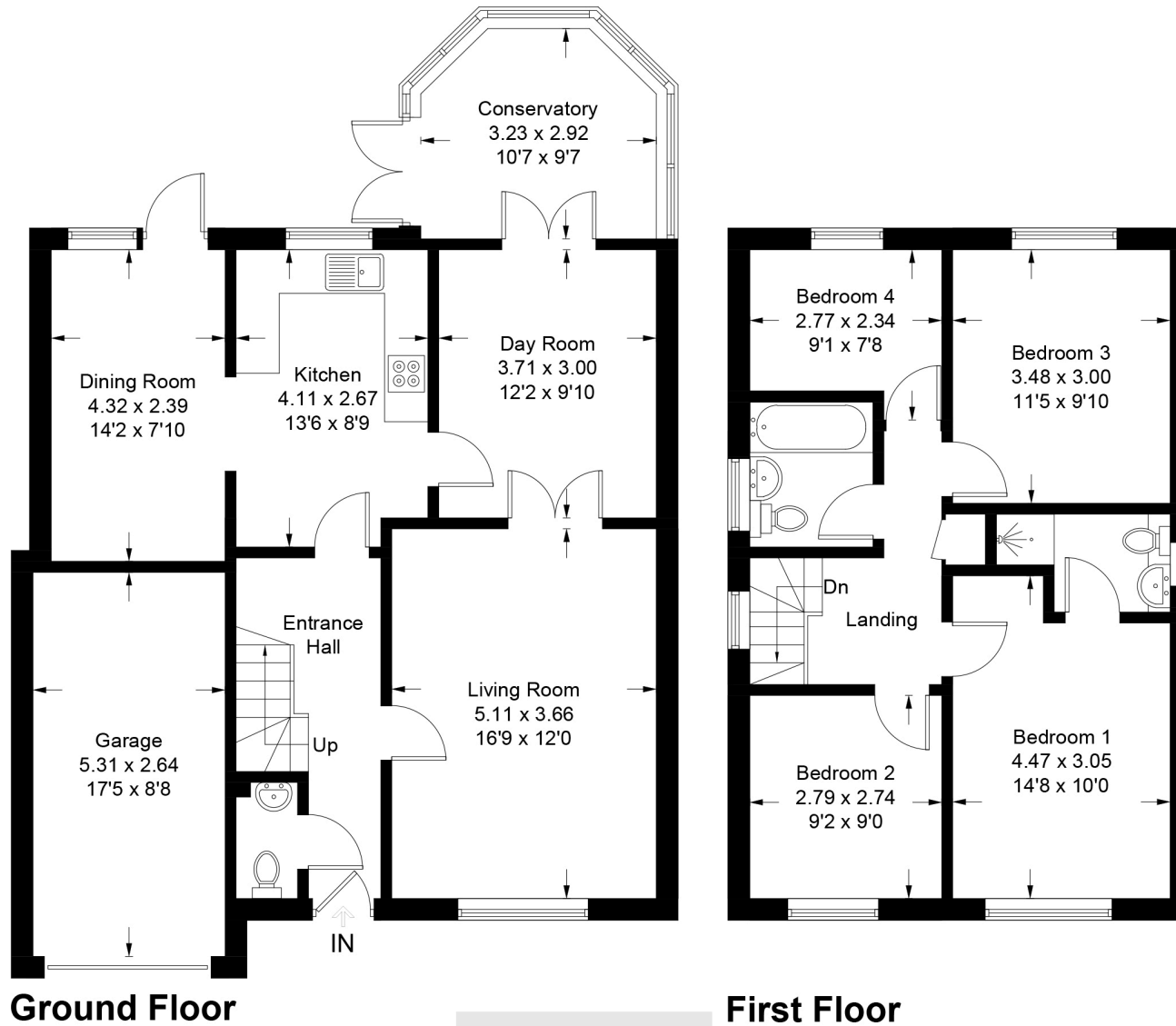


Illustration for identification purposes only, measurements are approximate, not to scale. FloorplansUsketch.com © 2023 (ID1013123)

Important notice

1. Particulars: These particulars are not an offer or contract, nor part of one. You should not rely on statements by Reynolds Salter in the particulars or by word of mouth or in writing ("information") as being factually accurate about the property, its condition or its value. Neither Reynolds Salter nor any joint agent has any authority to make any representations about the property, and accordingly any information given is entirely without responsibility on the part of the agents, seller(s) or lessor(s). 2. Photos etc: The photographs show only certain parts of the property as they appeared at the time they were taken. Areas, measurements and distances given are approximate only. Regulations etc: Any reference to alterations to, or use of, any part of the property does not mean that any necessary planning, building regulations or other consent has been obtained. A buyer or lessee must find out by inspection or in other ways that these matters have been properly dealt with and that all information is correct. 4. VAT: The VAT position relating to the property may change without notice.