



Hunsdon Road, Widford


Reynolds Salter
Estate Agents





A unique opportunity to acquire this spacious Grade 2 Listed period home situated in the highly sought after village of Widford. This delightful cottage offers a wealth of period features to include exposed timbers and a fireplace however it does require some updating/overhaul although in our opinion this largely relates to the exterior of the property. The accommodation comprises of a Double bedroom (part restricted headroom) and En-suite Bathroom on the first floor and a generous sized Lounge, Dining Room with Fireplace, Kitchen, Utility Room, Two further Bedrooms and a Family Bathroom on the ground floor. The cottage style gardens are a gardeners dream with lawn areas and an abundance of mature plants, bushes, trees and shrubs and at the back of the garden there is a pedestrian gate which leads into Lambs Gardens where there is a DETACHED GARAGE AND PARKING. Widford is a delightful village with a Primary School and only three miles from the main town of Ware where there is an abundance of local shops, bars and restaurants along with a railway station into London (Liverpool Street).

- **Grade 2 Listed Cottage**
- **Many Period Features**
- **Three Bedrooms**
- **Two Bathrooms**
- **Two Reception Rooms**
- **Delightful Cottage Gardens**
- **Detached Garage And Parking**

Little Goddards

Approximate Gross Internal Area = 133.3 sq m / 1435 sq ft

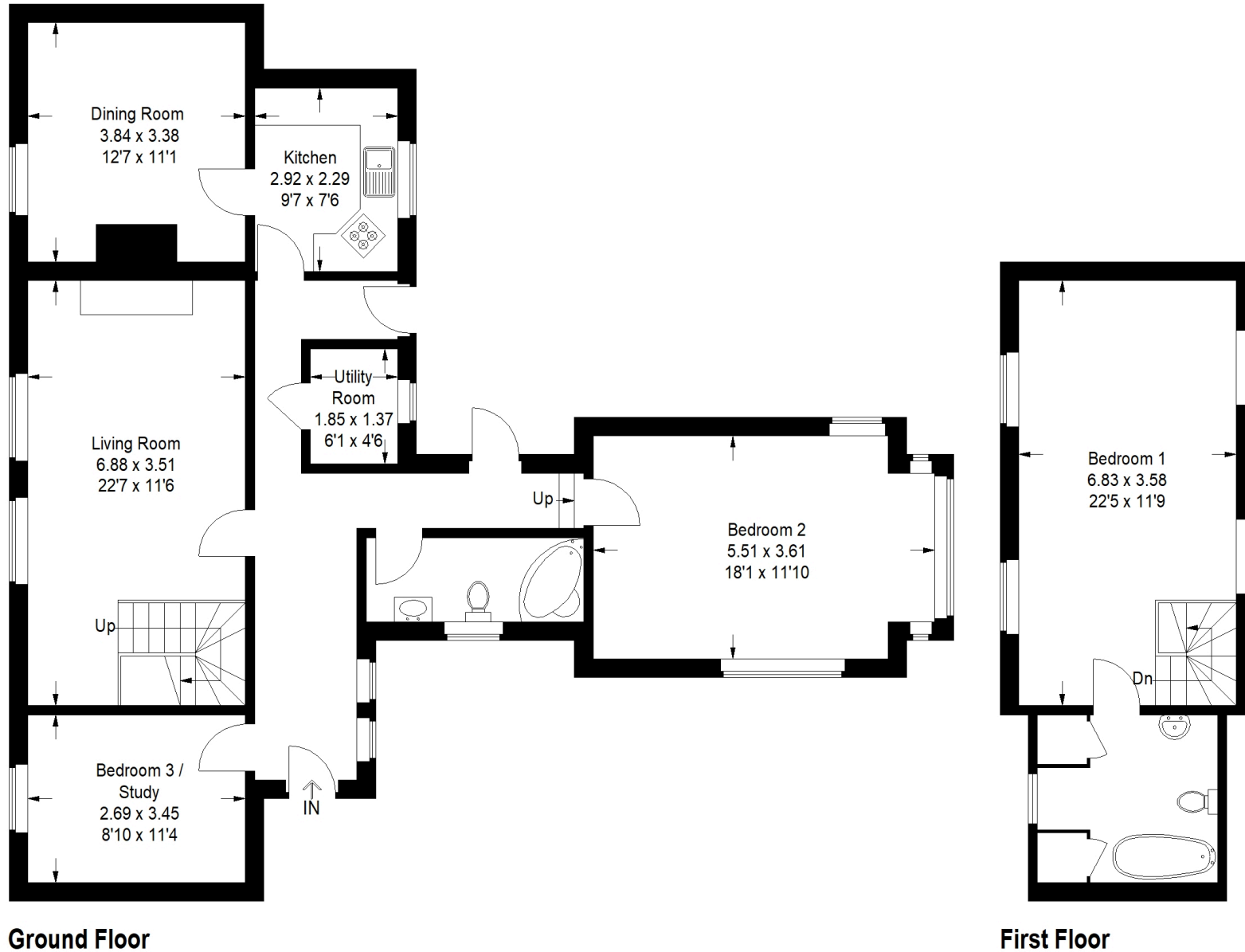


Illustration for identification purposes only, measurements are approximate, not to scale. floorplansUsketch.com © 2023 (ID1008012)

Important notice

1. Particulars: These particulars are not an offer or contract, nor part of one. You should not rely on statements by Reynolds Salter in the particulars or by word of mouth or in writing ("information") as being factually accurate about the property, its condition or its value. Neither Reynolds Salter nor any joint agent has any authority to make any representations about the property, and accordingly any information given is entirely without responsibility on the part of the agents, seller(s) or lessor(s). 2. Photos etc: The photographs show only certain parts of the property as they appeared at the time they were taken. Areas, measurements and distances given are approximate only. Regulations etc: Any reference to alterations to, or use of, any part of the property does not mean that any necessary planning, building regulations or other consent has been obtained. A buyer or lessee must find out by inspection or in other ways that these matters have been properly dealt with and that all information is correct. 4. VAT: The VAT position relating to the property may change without notice.