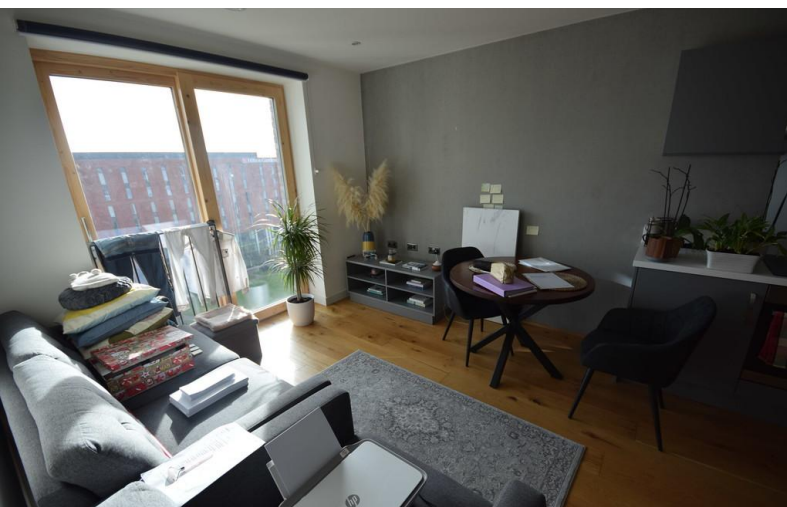


TO LET



Clayworks, Hanley

1 Bedroom, 1 Bathroom, Apartment

£850 pcm



Clayworks, Hanley

Apartment,
1 bedroom, 1 bathroom

£850 pcm

Date available: 10th August 2024

Deposit: £980

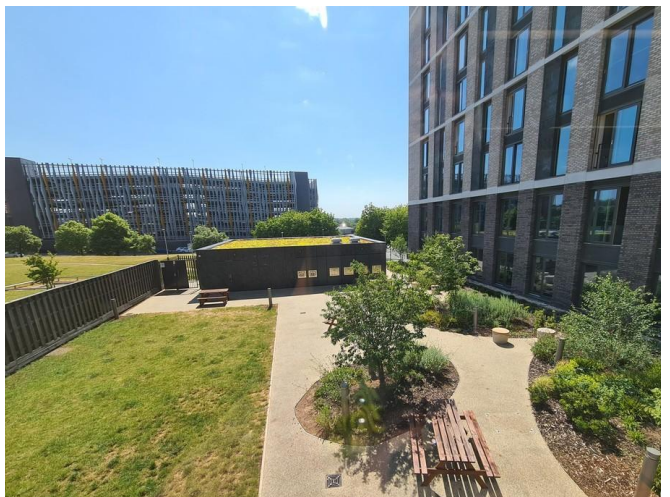
Furnished

Council Tax band: A

- 1 bedroom 8th floor flat
- Open plan lounge and kitchen
- Double bedroom
- Bathroom
- Daytime residential service manager
- Superb views
- Council tax band A

STUNNING 1 BEDROOM APARTMENT. Martin and co offer for rent this stunning 8th floor 1 bedroom apartment located in the prestigious Clayworks development within walking distance from Hanley town centre. The Clayworks development is a highly sought after block of apartments offering a daytime residential service manager, multi function room, private gardens, sun terrace and lifts to all floors. The flat comprises an open plan lounge and kitchen with patio door and a Juliette balcony, 1 double bedroom, Jack and Gill bathroom. The apartment also has the benefit of views of the surrounding area.

Energy Efficiency Rating		Current	Potential
Very energy efficient - lower running costs			
(92-100)	A		
(81-91)	B	85	85
(69-80)	C		
(55-68)	D		
(39-54)	E		



Martin & Co Stoke on Trent

12 Albion Street • Stoke-On-Trent • ST1 1QH

T: 01782 262880 • E: stokeontrent@martinco.com <http://www.martinco.com>

01782 262880



Accuracy: References to the Tenure of a Property are based on information supplied by the Seller. The Agent has not had sight of the title documents. A Buyer is advised to obtain verification from their Solicitor. Items shown in photographs including but not limited to carpets, fixtures and fittings are not included unless specifically mentioned within the sales particulars. They may however be available by separate negotiation. Buyers must check the availability of any property and make an appointment to view before embarking on any journey to see a property. No person in the employment of the agent has any authority to make any representation about the property, and accordingly any information given is entirely without responsibility on the part of the agents, sellers(s) or lessors(s). Any property particulars are not an offer or contract, nor form part of one. **Sonic / laser Tape:** Measurements taken using a sonic / laser tape measure may be subject to a small margin of error. **All Measurements:** All Measurements are Approximate. **Services Not tested:** The Agent has not tested any apparatus, equipment, fixtures and fittings or services and so cannot verify that they are in working order or fit for the purpose. A Buyer is advised to obtain verification from their Solicitor or Surveyor.