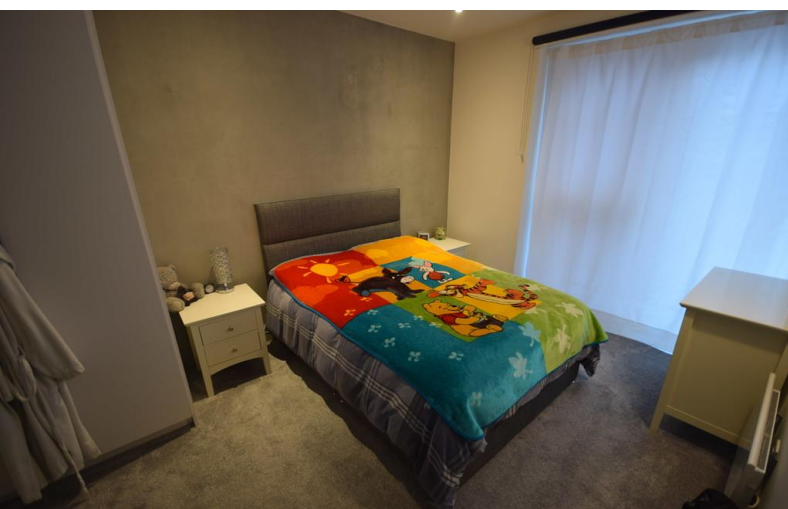


**TO LET**



**Clayworks, Hanley**

**2 Bedrooms, 2 Bathroom, Apartment**

**£900 pcm**



## Clayworks, Hanley

Apartment,  
2 bedroom, 2 bathroom

£900 pcm

Date available: 12th March 2024

Deposit: £1,038

Unfurnished

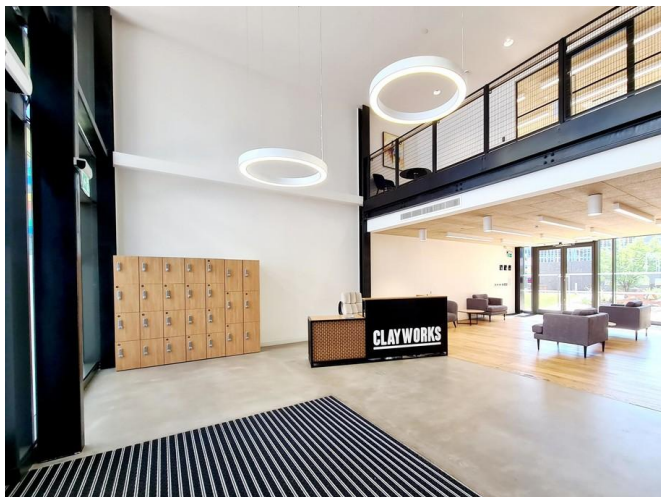
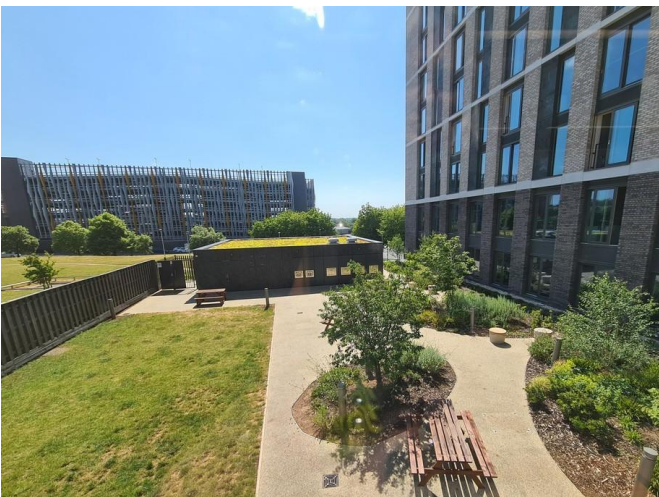
Council Tax band: B

- 2nd floor apartment
- Open plan lounge and kitchen
- 2 Double bedrooms
- En suite shower room
- Bathroom
- Daytime service manager
- Council tax band B

2ND FLOOR APARTMENT. Martin & Co bring to the market this stunning corner apartment in the highly sought after Clayworks development which is located in the heart of Hanley. Clayworks offers all residents a daytime resident service manager, co-working spaces, a roof terrace and a private landscaped courtyard garden area along with lifts to all floors. This apartment in brief comprises of an open plan kitchen and living area , 2 double bedrooms with fitted wardrobes, an en suite shower room to the master bedroom and a 'Jack and Jill' style bathroom to the other.

### Energy Efficiency Rating

	Current	Potential
Very energy efficient - lower running costs		
(92-100) <b>A</b>		
(81-91) <b>B</b>	85	85
(69-80) <b>C</b>		
(55-68) <b>D</b>		
(39-54) <b>E</b>		



---

## Martin & Co Stoke on Trent

12 Albion Street • Stoke-On-Trent • ST1 1QH

T: 01782 262880 • E: [stokeontrent@martinco.com](mailto:stokeontrent@martinco.com) <http://www.martinco.com>

# 01782 262880



**Accuracy:** References to the Tenure of a Property are based on information supplied by the Seller. The Agent has not had sight of the title documents. A Buyer is advised to obtain verification from their Solicitor. Items shown in photographs including but not limited to carpets, fixtures and fittings are not included unless specifically mentioned within the sales particulars. They may however be available by separate negotiation. Buyers must check the availability of any property and make an appointment to view before embarking on any journey to see a property. No person in the employment of the agent has any authority to make any representation about the property, and accordingly any information given is entirely without responsibility on the part of the agents, sellers(s) or lessors(s). Any property particulars are not an offer or contract, nor form part of one. **Sonic / laser Tape:** Measurements taken using a sonic / laser tape measure may be subject to a small margin of error. **All Measurements:** All Measurements are Approximate. **Services Not tested:** The Agent has not tested any apparatus, equipment, fixtures and fittings or services and so cannot verify that they are in working order or fit for the purpose. A Buyer is advised to obtain verification from their Solicitor or Surveyor.