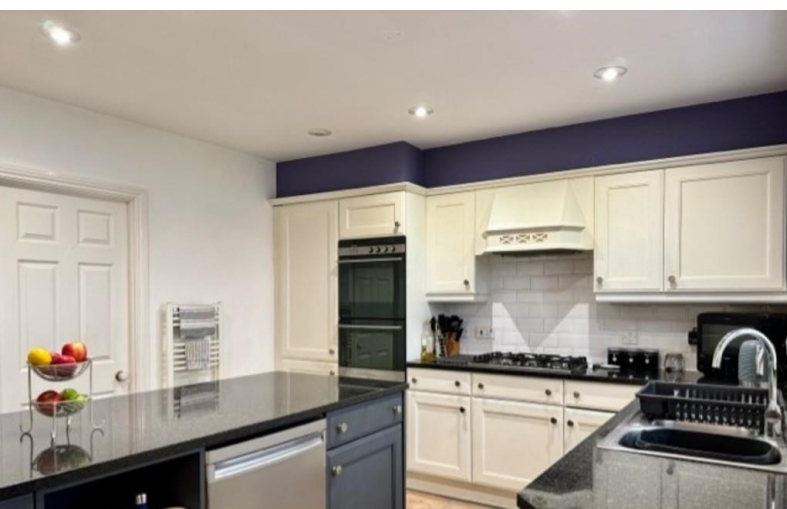


**TO LET**



## **Walnut Gardens, Claydon**

5 Bedrooms, 2 Bathroom, Detached house

**£2,400 pcm**



## Walnut Gardens, Claydon

5 Bedrooms, 2 Bathroom

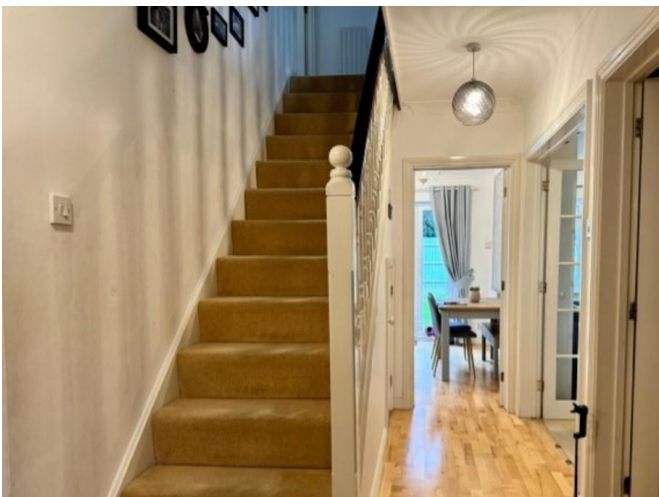
**£2,400 pcm**

Deposit: £2,769.23  
Unfurnished  
Council Tax band: F

- Stunning five-bedroom detached property
- Sought after village location
- Double garage
- Large driveway
- En-suite in master bedroom
- Spacious rooms
- Oil central heating









Martin and Co are pleased to bring to the market this stunning five-bedroom property at a very sought-after location in Claydon.

Accommodation includes -: Entrance hall, good-size lounge, cloakroom, separate dining room, study with fitted furniture, utility room and kitchen with an island. Upstairs there are five bedrooms, an en-suite shower room and a modern bathroom.

The property also benefiting from a driveway parking and a double garage to the side.

Call us now to avoid disappointment!





---

## Martin & Co Banbury

7 North Bar Street • • Banbury • OX16 0TB  
T: 01295 701773 • E: banbury@martinco.com

**01295 701773**  
<http://www.martinco.com>



**Accuracy:** References to the Tenure of a Property are based on information supplied by the Seller. The Agent has not had sight of the title documents. A Buyer is advised to obtain verification from their Solicitor. Items shown in photographs including but not limited to carpets, fixtures and fittings are not included unless specifically mentioned within the sales particulars. They may however be available by separate negotiation. Buyers must check the availability of any property and make an appointment to view before embarking on any journey to see a property. No person in the employment of the agent has any authority to make any representation about the property, and accordingly any information given is entirely without responsibility on the part of the agents, sellers(s) or lessors(s). Any property particulars are not an offer or contract, nor form part of one. **Sonic / laser Tape:** Measurements taken using a sonic / laser tape measure may be subject to a small margin of error. **All Measurements:** All Measurements are Approximate. **Services Not tested:** The Agent has not tested any apparatus, equipment, fixtures and fittings or services and so cannot verify that they are in working order or fit for the purpose. A Buyer is advised to obtain verification from their Solicitor or Surveyor.