



ENNISMORE GARDENS

KNIGHTSBRIDGE SW7



A well designed one bedroom flat on the first floor of this classic period building backing onto the communal gardens. The flat offers high ceilings with three floor to ceiling windows that open onto a balcony which sits over the portico entrance. The mezzanine level bedroom benefits from an ensuite bathroom, built-in storage and wonderful views.



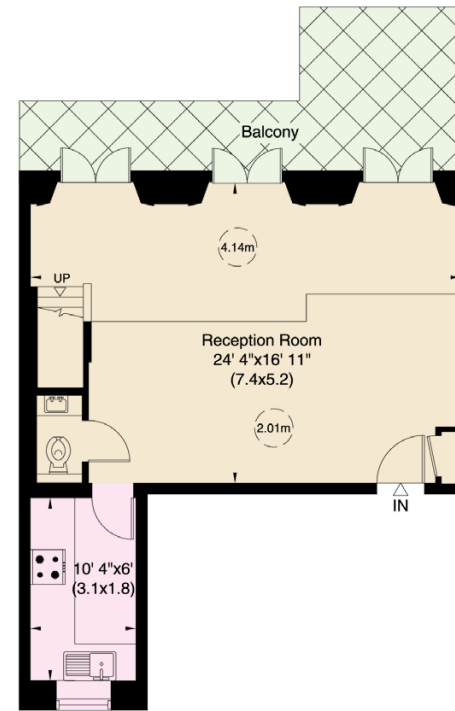
Ennismore Gardens is a highly desirable address located in the heart of Knightsbridge with Hyde Park being only a walk away. The area is renowned for its proximity to world-class shopping destinations like Harrods and Sloane Street, as well as London's most famous museums and the Royal Albert Hall.



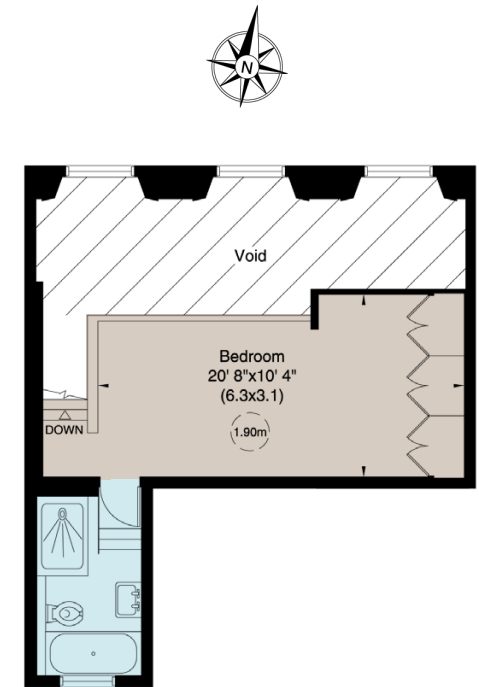
FEATURES

- Bedroom with Ensuite Bathroom
- Reception Room ■ Kitchen
- Guest WC ■ Balcony ■ Lift
- Access to Communal Gardens

APPROX. GROSS INTERNAL AREA 765 sq ft / 71 sq m



FIRST FLOOR



SECOND FLOOR

*THIS FLOORPLAN IS FOR GUIDANCE ONLY AND NOT FOR VALUATION PURPOSES

PRICE £1,295,000
TENURE Leasehold with circa 92 years remaining
SERVICE CHARGES £4,094

NVP
 NICOLAS VAN PATRICK

6-8 MONTPELIER STREET,
 LONDON SW7 1EZ
 SALES | +44 (0)20 7581 8277
 LETTINGS | +44 (0)20 7590 1200
 info@nicolasvanpatrick.com
 www.nicolasvanpatrick.com

These details have been prepared for general guidance only and should not be relied upon by prospective purchaser/ tenants who before proceeding must check and otherwise satisfy themselves as to the property and the nature, state and availability of any facility or service.

