



Gabriel
ROSSETT
House



Gabriel ROSSETT *House*



Welcome

Regency grandeur for a contemporary age: classic elegance and contemporary comfort combine in style at Gabriel House, a Neo-Classic masterpiece of a home, in the rural village of Rossett.

Ample parking can be found on the large gravel driveway, which leads to a detached garage with high, vaulted ceiling and accessed via an electric remote controlled up and over door. The garage accommodates a photovoltaic panel system, powering the home with green energy. There is also a workshop to the rear.

Embodying the essence of Georgian symmetry, large sash windows, arched fanlights and an ionic columned portico set the scene for the grandeur within.



Light-filled Living

Making your way indoors, the light-filled hall delivers on the promise of high, airy ceilings, embellished architraves and ornate cornicing. Modern upgrades include the underfloor heating, zoned and flowing throughout the ground floor, whilst classical elegance remains woven throughout the home, for instance in the imposing staircase that stands centre stage. Light and bright, the entrance hall is a destination in itself, with ample space for a dining table or office desk and with double doors to the rear opening out to the garden.





Grand Proportions

Greet your guests in the formal drawing room on the right, where solid oak flooring continues through from the entrance hall and enormous sash windows draw in the light and views.

Detailed cornicing and a decorative frieze dresses the ceiling, with a handsome fireplace furnished with a modern Jotul stove, emanating warmth and welcome throughout the winter months.

Across the entrance hall, Georgian proportions blend with modern family life in the open plan dining-kitchen. To the front, the dining room features oak flooring underfoot alongside a gas Jotul stove, inset within an ornately-carved Georgian-style mantel.







Feast Your Eyes

Extending to the rear, the kitchen opens up. Spacious and light, with large sash windows overlooking the extensive rear garden, bespoke cabinetry in cream and bottle green offers a range of storage options, with plenty of preparation space on the marble worktops. Appliances include a Range-style cooker and sink with ample space for a freestanding American-style fridge-freezer. Light flows through this expansive space through feature windows to three sides.

Returning to the entrance hall, discover the enormous utility room, furnished with a range of fitted cabinets, a sink and plumbing for a washer and dryer, with access out to the garden.

Also on the ground floor is a handy cloakroom fitted with wash basin and WC.





Sweet Dreams

From the entrance hall, an attractive staircase captures the elegance of the era, rising to the first floor landing where light floods in through a full height sash window, framing stunning views out over the garden and fields.

High ceilings feature throughout Gabriel House, and are embellished with ornamental coving and friezes as demonstrated in the first double bedroom to be arrived at from the landing, overlooking the garden and fields through two large sash windows. An attractive fireplace is nestled within a corner wall.

Making your way along the landing, note the six-panel doors throughout - another nod to the faithful Neo-Georgian design of Gabriel House.





Rest and Refresh

To the rear of the home, sneak a peek at the stunning master suite, carpeted in grey underfoot and with detailed cornicing and ornate ceiling rose. Supremely spacious, a large sash window frames views out over the garden.

Beneath an elegant archway, step through into the large dressing room with fitted wardrobes, leading on to a refreshingly large ensuite, with bath, vanity unit wash basin, WC, separate shower and finished again in intricate cornicing and ceiling rose.

Returning to the landing, bedroom three is dressed in blush pink and offers leafy vistas out over the front. A spacious double bedroom, there is abundant storage in the built-in wardrobe.





Elevate Your Expectations



Next door, the family bathroom features a bath with shower over, wash basin and WC.

Currently serving as a dressing room, bedroom four could serve as a stylish office or nursery.

Take the stairs up from the landing to the second floor, where arched windows to four sides draw in a profusion of light. There is plenty of potential to create multiple bedrooms on this level, or utilise the space as a games room, cinema room or lounge.

It could also serve as a master suite with dressing room and ensuite; abundant storage is available in the fitted cupboards. Far reaching views over fields and across the Cheshire plains are the icing on the cake.



Enchanting Gardens

In harmony with the elegance and prestige of Gabriel House are the surrounding gardens, nestled behind a handsome reclaimed brick wall, which retains the warmth of the sunshine throughout the day.

A centrepiece of the gardens is the enchanting, three-tier, tinkling stone fountain, adding an Italianate feel. Well-manicured lawns, with mature borders to the south and west, blend beautifully with the countryside setting, whilst the semi-circular patio is ideal for wining and dining.





On Your Doorstep

Nestled on the border of England and Wales, enjoy the tranquillity of village living with direct access to the North Wales coastline.

Built along the banks of the River Alyn, footpaths unfurl in every direction, through the fields and alongside waterways offering an abundance of dog walking and cycling options. Many walks take you over the handsome, Grade-II listed Cook's Bridge, dating back to the 19th century.

After exploring the local area, with its iconic architecture, call in for a thirst quencher at The Golden Lion, or enjoy Sunday lunch at gastropub The Alyn.

With nurseries, primary and secondary schools close by, including St Peter's primary school in the village, Rossett is also within access of the neighbouring towns of Wrexham – where there are several shops and supermarkets - and Chester, for independent schools and a wide selection of shops, cafes, bars and boutiques.

Treat yourself with an afternoon of pampering at the Grosvenor Pulsford Hotel. Commute with convenience - Chester is less than 20 minutes' away by road with rail links to London and Manchester.

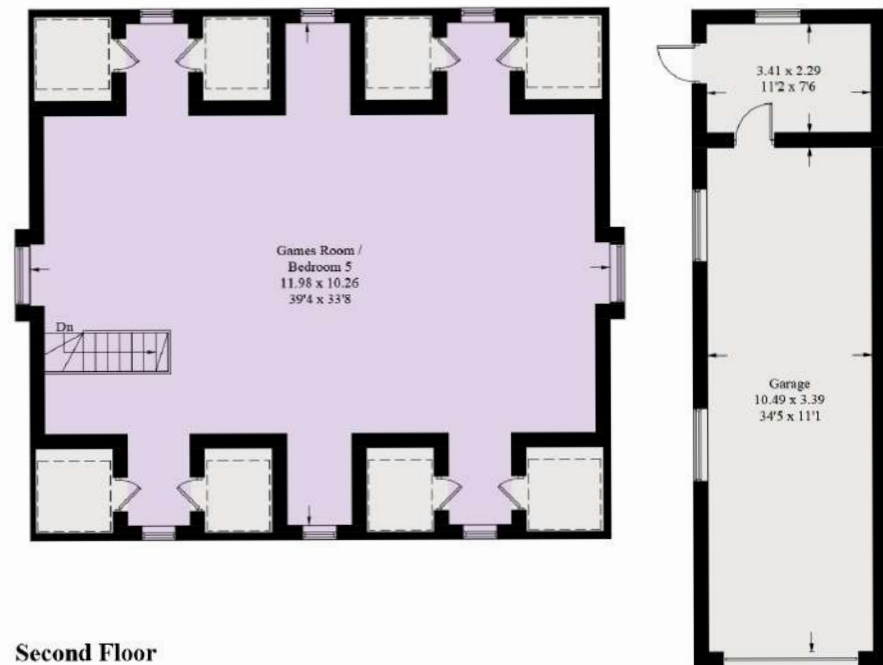
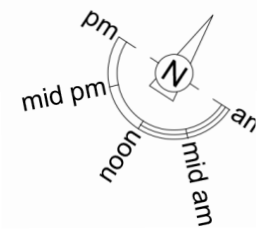
A home where classic and contemporary combine, and where restful rurality blends with accessibility to towns and cities, Gabriel House offers stylish living in total tranquillity.

Approximate Gross Internal Area = 339 sq m / 3648 sq ft
 Garage = 45 sq m / 480 sq ft
 Total = 383 sq m / 4128 sq ft



Ground Floor

First Floor

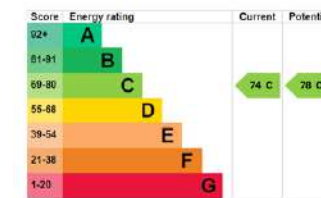


Second Floor

(Not Shown In Actual Location / Orientation)



Gabriel
 ROSSETT
House



FINER DETAILS

- Freehold
- Gated driveway
- Detached garage with electric door
- 0.4 of an acre
- Wrap around garden
- 6.8 Miles from Chester
- Views of fields

Illustration for identification purposes only, measurements are approximate, not to scale. floorplansUsketch.com © (ID1033226)

Gabriel ROSSETT House



presented by

CURRANS
unique homes

/// WHAT3WORDS: knowledge.resting.slips

To view Gabriel House
Call John
on 01244 313 900
Email: john@curransunique.co.uk

18 Grosvenor Street, Chester CH1 2DD
www.curransunique.co.uk



SCAN ME TO
BOOK A VIEWING