



The Orchard, Croston

PR26 9HS



£96,500



Good sized first floor apartment with communal parking and gardens, in a popular residential area with access to village amenities, primary transport routes and countryside walks. Available with no upward chain.

The property benefits from a courtesy porch and storage by the main entrance. Head up the stairs to the first floor landing with loft access and airing cupboard housing the central heating boiler. The living room has views over to fields and trees as does bedroom two. Bedroom one is a double to the rear overlooking the communal garden.

The kitchen comprises a range of wall and base units with electric hob, oven and grill and a range of wall and base units. The bathroom comprises bath, wash hand basin and wc.



Good sized first floor apartment with communal parking and gardens, in a popular residential area with access to village amenities, primary transport routes and countryside walks. Available with no upward chain.

Council Tax band: A

Tenure: Leasehold

- First floor apartment
- Two bedrooms
- Communal parking and gardens
- No upward chain



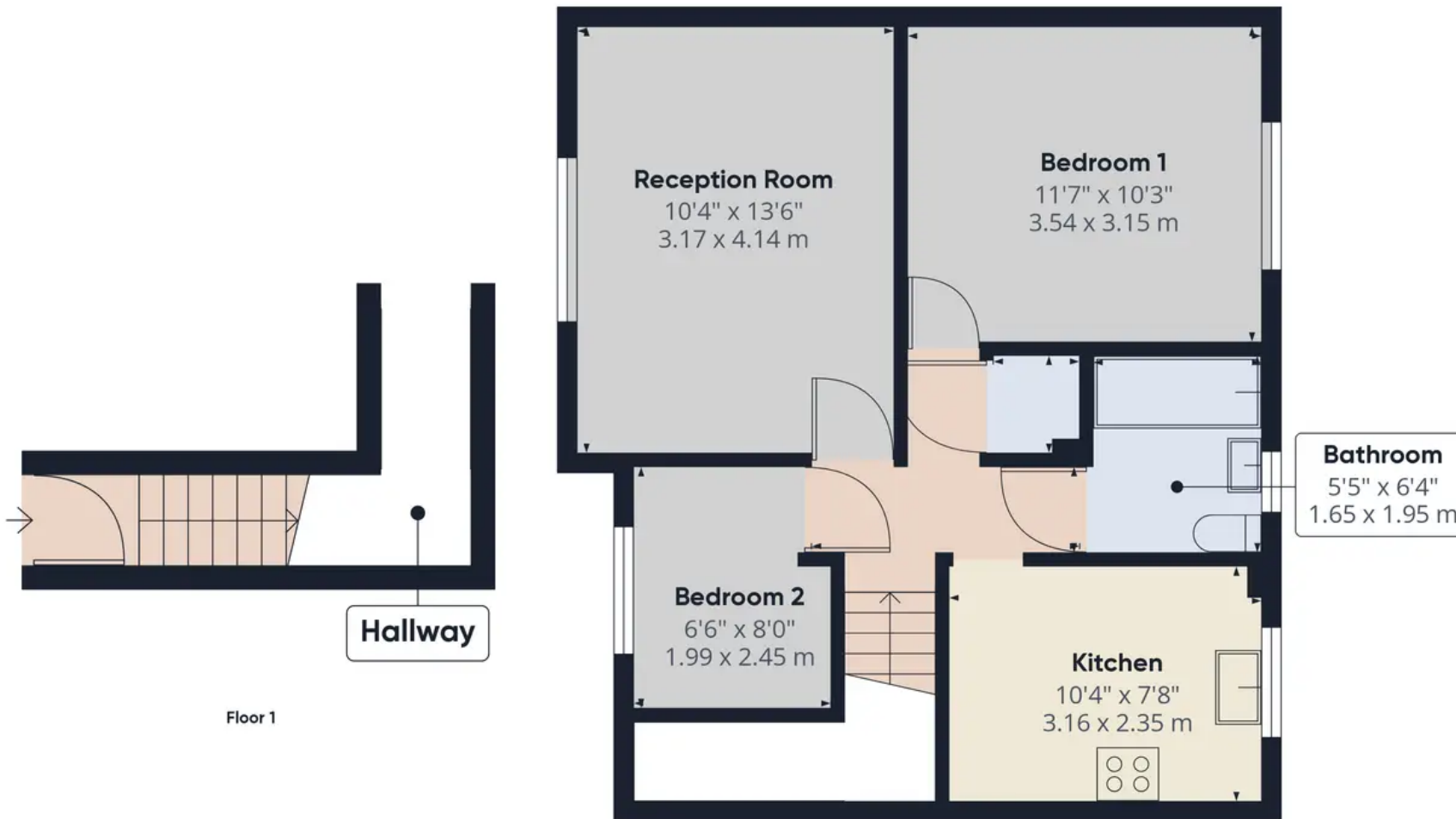
HOME  TRUTHS

Eccleston Branch
265 The Green, Eccleston, PR7 5TF
01257 451673

Coppull Branch
244 Spendmore Lane, Coppull, PR7 5DE
01257 794588

www.hometruthslancs.co.uk
office@hometruthslancs.co.uk





Floor 1

Floor 2

Approximate total area⁽¹⁾
530.42 ft²
49.28 m²

(1) Excluding balconies and terraces

While every attempt has been made to ensure accuracy, all measurements are approximate, not to scale. This floor plan is for illustrative purposes only.

GIRAFFE360