



Emma Place, Plymouth

£650,000



Emma Place

Exceptional 5-bed end-of-terrace Victorian townhouse in sought-after location. Spacious rooms, elegant living area, modern kitchen, garage, enclosed garden & off-road parking. Includes 1-bed basement apartment annexe. Conveniently located near amenities. A sanctuary for discerning homeowners. Contact us for a private viewing.

- A Spacious Victorian Townhouse
- Recently Added Kitchen Breakfast Room
- Dual Utility Rooms
- Integral garage
- Bathroom, Shower Room and separate WC to main house
- Large Enclosed Garden
- Off Road Parking
- 1 Bedroom Basement Apartment Annexe
- A wonderful multi-generational home
- conveniently located for ease of access to a wide range of civic amenities



Emma Place

Introducing this exceptional 5-bedroom end-of-terrace property, a truly magnificent example of a spacious Victorian townhouse. Situated in a sought-after location, this residence exudes a blend of traditional charm and contemporary elegance.

Upon entering this marvellous home, you are greeted by a warm and welcoming atmosphere. Boasting four generously sized bedrooms, this property ensures ample space for the growing family. The master bedroom is adorned with large windows, allowing for an abundance of natural light to permeate the room.

The ground floor showcases a delightful living room, providing ample space for relaxation and entertainment. This room seamlessly flows into the elegant dining room, making it the perfect setting for hosting family meals and social gatherings.

Recently added, the kitchen breakfast room has been thoughtfully designed to accommodate the demands of modern living. Equipped with state-of-the-art appliances and tasteful finishes, this area exudes style and functionality. Additionally, dual utility rooms offer convenience and efficiency in managing household chores.



Emma Place

Incorporating a garage within the property, convenience is at the forefront of this offering. Not only does it provide a secure space for parking, but also offers potential for additional storage options.

With a bathroom, shower room, and separate WC, this exceptional property ensures ample facilities for the busy family. Clean lines and neutral tones create a harmonious balance, culminating in a serene atmosphere throughout.

A highlight of this remarkable residence is the large enclosed garden, offering the perfect oasis for outdoor activities and relaxation. Its lush greenery provides a tranquil escape from the hustle and bustle of every-day life.

The property further benefits from off-road parking, providing convenient options for multiple vehicles. This feature is a welcome addition in the contemporary setting.

An added bonus to this impressive dwelling is the 1-bedroom basement apartment annexe. Ideal for accommodating family or guests, this self-contained space adds versatility to this multi-generational home.



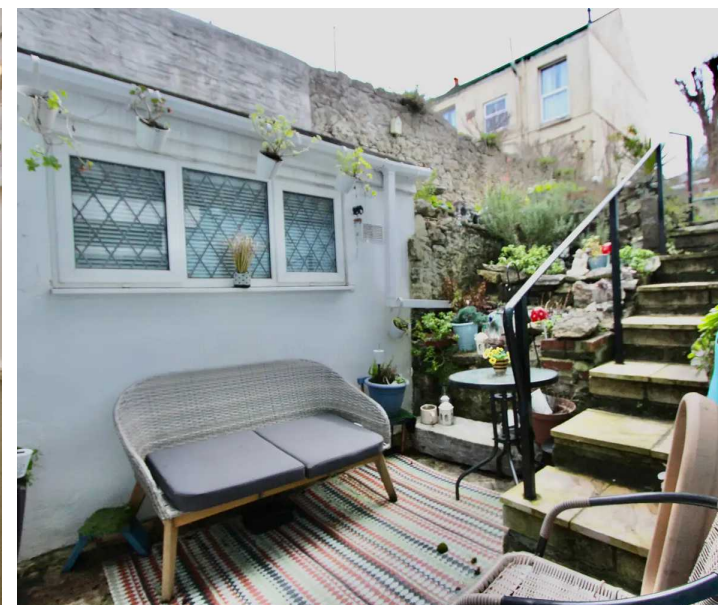
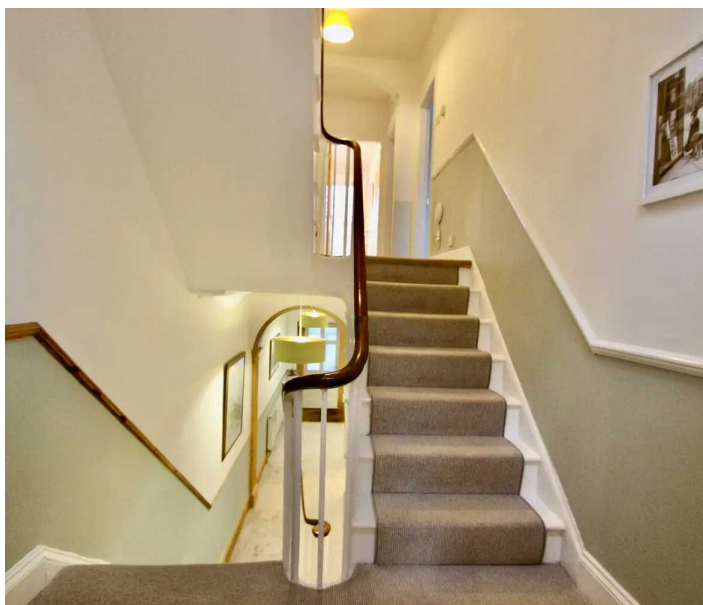
Emma Place

Conveniently located, this property is perfectly positioned in close proximity to a wide range of civic amenities. With easy access to schools, shopping centres, and recreational facilities, this residence ensures convenience and accessibility at every turn.

In summary, this exceptional 5-bedroom end-of-terrace property presents a wonderful multi-generational home that seamlessly blends traditional charm and contemporary living. With its spacious rooms, elegant living areas, and convenient facilities, this residence offers a sanctuary for the discerning homeowner. Do not miss the opportunity to make this magnificent property your own. Contact us today to arrange a private viewing.

Council Tax band: C

Tenure: Freehold







Atwell Martin

Atwell Martin, 65 Southside Street – PL1 2LA

01752 202121

plymouthsales@atwell-martin.co.uk

plymouth.atwellmartin.co.uk/

Atwell Martin Plymouth endeavour to ensure the accuracy of property details produced and displayed. Please note that we have not tested any apparatus, equipment, fixtures, fittings or services and so cannot verify that they are connected, in working order or fit for purpose. It is imperative that the buyer of any property makes such checks, prior to purchase so as to satisfy themselves of the properties suitability for their purchase. .