

Stansfield Drive, Euxton

PR7 6QH

 £375,000



Fabulous four bedroom detached property in a popular and sought after location close to primary transport routes, town and village centre amenities and offering over 1100 square feet of accommodation. The tarmac driveway can accommodate two vehicles and leads to the main entrance. Step into the vestibule and from there to the spacious bay fronted living room, with snug leading off. To the rear, the heart of the house has plenty of space for both dining and comfortable furniture, and the kitchen comprises a range of wall and base units with breakfast bar and integrated appliances including refrigerator and freezer, gas hob with extractor over, double electric oven and grill and dishwasher. Completing the ground floor are the cloakroom with wc and wash hand basin, and the separate utility room housing the Potterton boiler and having space, power and plumbing for additional appliances. Step outside into the gorgeous and very private garden with lawn bordered by sleeper edged raised beds with mature planting, Indian stone terrace on which to relax and entertain and pebble ponds to please the eye. Back inside, carpeted stairs lead to the first floor landing with bedroom one benefiting from en suite comprising rainfall mixer shower in cubicle, ladder heated towel rail, wc and floating wash hand basin. There are two further double bedrooms with bedroom four a comfortable single currently enjoying life as a home office. The bathroom comprises bath with screen and shower attachment, wc, floating wash hand basin and ladder heated towel rail. With solar panels for hot water and plenty to offer both inside and out, this is a first class family home.



Fabulous four bedroom detached property in a popular and sought after location close to primary transport routes, town and village centre amenities and offering over 1100 square feet of accommodation.

Council Tax band: E

Tenure: Freehold

- Spacious detached property
- Over 1100 square feet of accommodation
- Four bedrooms
- Delightful private garden to the rear
- Lovely family room
- Close to village and town centre amenities



HOME  TRUTHS

Eccleston Branch
265 The Green, Eccleston, PR7 5TF
01257 451673

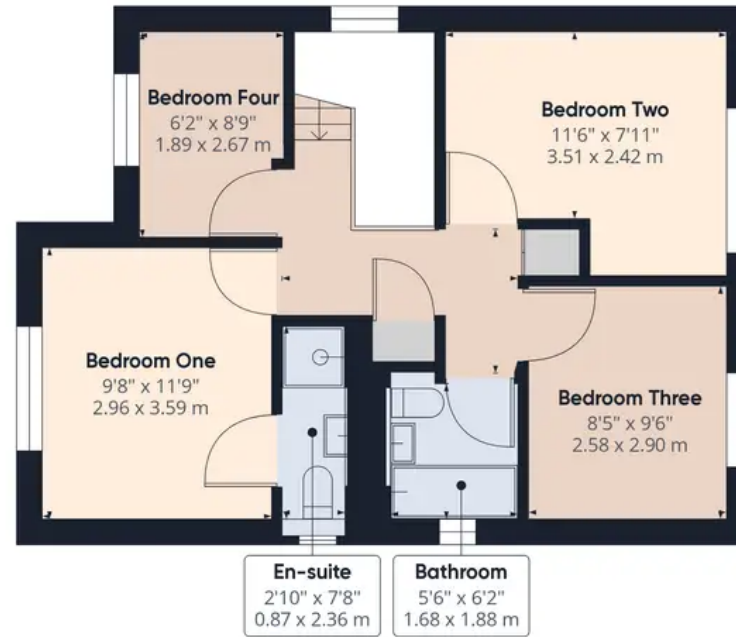
Coppull Branch
244 Spendmore Lane, Coppull, PR7 5DE
01257 794588

www.hometruthslancs.co.uk
office@hometruthslancs.co.uk





Floor 1



Floor 2

Approximate total area⁽¹⁾
 1129.71 ft²
 104.95 m²

Excluding balconies and terraces

While every attempt has been made to ensure accuracy, all measurements are approximate, not to scale. This floor plan is for illustrative purposes only.