



MODERN AND WELL PRESENTED THREE BEDROOM FAMILY HOME

The Willows, Rickmansworth, Hertfordshire, WD3 8YY

ROBSONS

MODERN AND WELL PRESENTED THREE BEDROOM FAMILY HOME

The Willows, Rickmansworth, Hertfordshire, WD3 8YY

- RECEPTION ROOM
- KITCHEN
- PRINCIPAL BEDROOM
- TWO FURTHER BEDROOMS
- FAMILY SHOWER ROOM
- REAR GARDEN WITH BREATH TAKING VIEWS

Description

An immaculately presented and extended three-bedroom family home, with modern interiors, breathtaking views of the nature reserve and within easy reach of local amenities, schools and transport links.

The ground floor comprises an entrance hallway, with useful under stairs storage cupboard and stairs to the first floor. There is a front aspect kitchen featuring a range of modern units and integrated appliances and a light and bright reception room with patio doors opening out to the garden with space for a dining table and chairs.





To the first floor there are two well-appointed bedrooms, with one benefitting from fitted wardrobes and a family shower room. The second floor hosts a spacious principal bedroom, with two skylights and patio doors opening to Juliette balcony.

Externally, there is a well-presented, blocked paved, south-facing rear garden to enjoy outside dining with stunning views of the nature reserve and rear access to the garden.

Location

Rickmansworth town centre has a wide range of boutique shops, coffee houses, restaurants and major supermarkets. The Metropolitan and Chiltern line train services connect you to London Baker Street, Marylebone Station and beyond. The M25 motorway is available at both junction 17 and 18, connecting you to the national motorway network. Major London airports are also within reach. The area is well served for good quality private and state schools for all ages. Chorleywood and Rickmansworth offer everything for the sporting individual from rugby, cricket, football, tennis, horse riding and golf. Rickmansworth Aquadrome is an ideal setting for walks, sailing, fishing and water skiing.

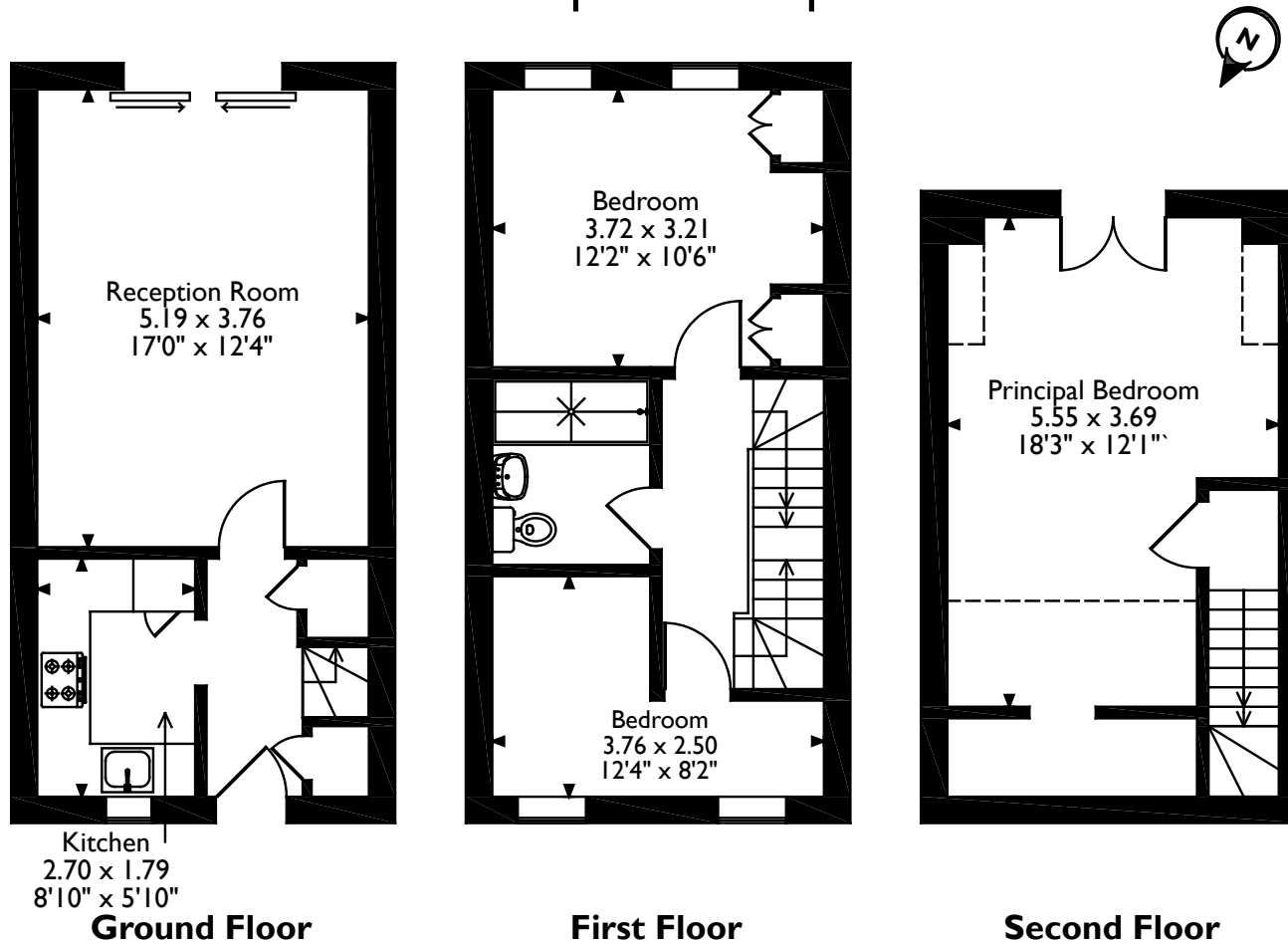
Additional Information

Tenure: Freehold
Local Authority: Three Rivers District Council
Council Tax: Band E
Energy Efficiency Rating: Band C



The Willows, Mill End, Rickmansworth, Hertfordshire

Approximate Gross Internal Area 77 Sq M/829 Sq Ft



Please note that the location of doors, windows and other items are approximate and this floorplan is to be used for illustrative purposes only. Unauthorized reproduction is prohibited.



130 High Street, Rickmansworth, Hertfordshire, WD3 1AB
Tel: 01923 777762 Rickmansworth@robsonswb.com

www.robsonswb.com

www.
the
londonoffice.co.uk
40 ST JAMES'S PLACE SW1