



SALES

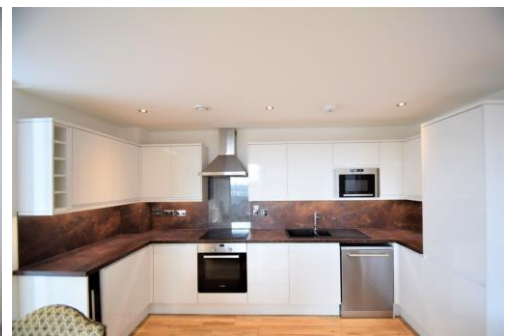
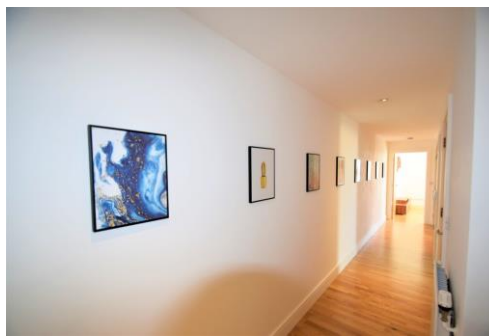
LETTINGS

MANAGEMENT

chiswick@tatepartnership.co.uk

020 8996 0000

TATEPARTNERSHIP.CO.UK



Bruce Court Ealing W5

£517,500

Bruce Court is a Stylish Modern development, quietly tucked away in Underhill Gardens, just off Uxbridge Road. This apartment is on the third floor and flooded with natural light, due to feature floor-to-ceiling windows. The generous 898sq/ft accommodation comprises: a front to back entrance hall, open plan living room with delightful Dining Balcony. Modern fitted kitchenette. Two generous double bedrooms. Modern family bathroom. Other facilities include, lift to all floors, resident bicycle store, building/apartment Video Entry System. The location is just a few minutes walk to Ealing Broadway town centre, West Ealing Central and District lines, Elizabeth Line and Overground rail connections. Environmentally friendly "car free development". Vacant Possession.

Bruce Court Ealing W5

Floor Plan

Approximate gross internal area
83 sq m / 898 sq ft

Bruce Court Ealing, W5

Approximate Gross Internal Area = 83.9 sq m / 903 sq ft

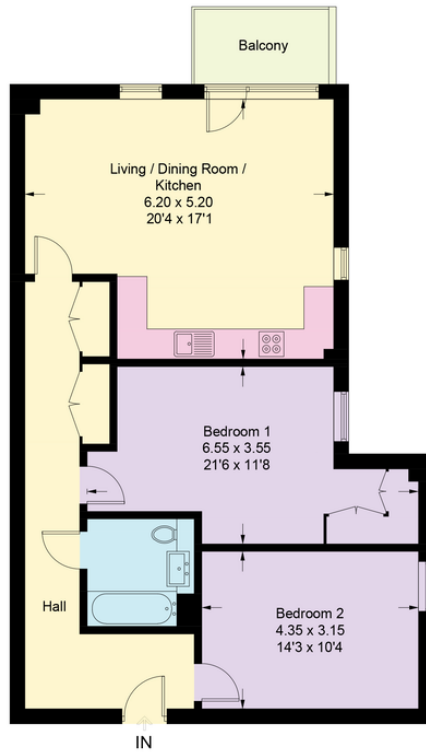


Illustration for identification purposes only, measurements are approximate, not to scale. floorplansUsketch.com © (ID1046056)

EPC

